

WISCONSIN

Free!

Hi-LITER

SERVING SOUTHEASTERN WISCONSIN

MAY 7-13, 2025VOL. 74 • NO. 21

DISPLAY ADS (262) 763-2575 | CLASSIFIEDS (262) 728-3411 | DELIVERY (262) 728-3411

209 N. DODGE ST., BURLINGTON, WI 53105-1261PUBLISHED BY SOUTHERN LAKES NEWSPAPERS, LLC

THE BURLINGTON AREA GARDEN CLUB

PLANT SALE
& Recycled Garden Treasures

SATURDAY, MAY 17
8:30-11:30 A.M. • Riverside Park
(behind Adrian's Custard Stand)

PERENNIALS
FROM
LOCAL GARDENS

Cash or Credit Card
Cost Starting at \$4.00

PRST STD
U.S. POSTAGE
PAID
SOUTHERN LAKES
NEWSPAPERS LLC

*across
Residential Customer

LYNCH BURLINGTON

These Deals Are
OUT OF THE PARK!

<div>P16654</div> <div></div> <div>2022 MITSUBISHI MIRAGE*</div> <div>\$11,990</div>	<div>250484A1</div> <div></div> <div>2016 FORD EXPLORER INTERCEPTOR*</div> <div>\$15,490</div>	<div>250045A</div> <div></div> <div>2022 KIA SPORTAGE LX*</div> <div>\$15,690</div>	<div>P16690</div> <div></div> <div>2022 CHEVY MALIBU LT*</div> <div>\$15,990</div>	<div>P16512A</div> <div></div> <div>2020 CHEVY EQUINOX PREMIER*</div> <div>\$17,790</div>
<div>16728A</div> <div></div> <div>2019 GMC TERRAIN DENALI*</div> <div>\$19,940</div>	<div>P16659</div> <div></div> <div>2022 CHRYSLER VOYAGER LX*</div> <div>\$20,490</div>	<div>P16796</div> <div></div> <div>2024 CHEVY TRAX LT*</div> <div>\$22,990</div>	<div>P16697</div> <div></div> <div>2024 CHEVY EQUINOX LS*</div> <div>\$23,430</div>	<div>P16680</div> <div></div> <div>2024 BUICK ENVISTA AVENIR*</div> <div>\$27,430</div>
<div>P16834</div> <div></div> <div>2021 CHEVY BLAZER 2LT*</div> <div>\$27,490</div>	<div>P16786</div> <div></div> <div>2022 GMC CANYON ELEVATION*</div> <div>\$29,740</div>	<div>250487A</div> <div></div> <div>2019 GMC SIERRA SLT*</div> <div>\$30,490</div>	<div>P16791</div> <div></div> <div>2023 GMC TERRAIN DENALI*</div> <div>\$31,990</div>	<div>P16725</div> <div></div> <div>2021 CHEVY TRAVERSE HIGH COUNTRY*</div> <div>\$32,740</div>
<div>P16825</div> <div></div> <div>2018 GMC YUKON DENALI*</div> <div>\$38,990</div>	<div>P16785</div> <div></div> <div>2019 CHEVY CAMARO 2SS*</div> <div>\$39,750</div>	<div>P16619</div> <div></div> <div>2022 RAM 3500 BIG HORN*</div> <div>\$40,740</div>	<div>P16651A</div> <div></div> <div>2021 FORD F-150 LIMITED*</div> <div>\$42,990</div>	<div>250381A</div> <div></div> <div>2022 CHEVY SILVERADO HIGH COUNTRY*</div> <div>\$43,740</div>

Patrick Lynch

Jim Olsson

Geoff Eckhardt

Chris Kahlmorgan

Craig Roffers

Pete Manos

Thomas Gier

Alec Thatcher

Isaac Thiel

Graham Robson

Bryan Wangnoss

Bob Christensen

Nick Kramer

Bob Labadie

Jeff Mucks

Tyler Swanson

Khara Kosinski

Alfredo Morales

Donna Janz

LYNCH BURLINGTON

2300 Browns Lake Drive
Burlington, WI

262-757-2977

Sales Hours: Mon-Th 8:30-7 Fri 8:30-6 Sat 8:30-4

LynchGMSuperStore.com

OVER 180
PRE-OWNED VEHICLES!

*Prices do not include tax, title, license and service fee. Dealership is not responsible for printing errors. Please see dealership for details. Sale ends 5/13/2025.

471470



Honoring Our Officers

NATIONAL POLICE WEEK MAY 11-16

During National Police Week, we recognize the important service and selfless sacrifice of our nation’s dedicated law enforcement professionals. For their caring and protection, we thank the brave men and women who serve, and honor the memory of those who have lost their lives in the line of duty.

**Thank you to the following businesses for their sponsorship of this page.
Please patronize these local businesses who support our community’s law enforcement.**

Accent Roofing, LLC

237 Christie Lane, Twin Lakes
www.accentroofingonline.com

262-515-4385

Thanks for all you do!

Ketterhagen Memorials

Burlington

262-763-2535

Elkhorn

262-723-3291

Thank you for keeping our communities safe.

Union Grove

Auto Parts

1401 Main Street, Union Grove

262-878-1374

Thank you for your service!

Burlington Glass

35518 W. State Street, Burlington

262-763-5646

*Thank you for all your help and support
for our community!*

Ketter’s Flooring, Inc.

257 Milwaukee Avenue, Burlington

262-763-6259

*Thank you so much for your service
and all that you do!*

Union Grove

Lumber & True Value

1024 10th Street, Union Grove

262-878-1214

*We appreciate your service
to our community!*

Carpets Plus Outlet

1241 22nd Avenue, Kenosha

262-883-9494

Thank you for your support!

**Chris’ USA
Bar & Grill**

724 Milwaukee Avenue, Burlington

262-763-9968

Thank you for all you do!

**Country Rose
Bakery Cafe**

19319 Washington Street, Union Grove

262-878-5474

Thank you for all you do!

Melody Park Campgrounds

2154 E. Lakeshore Drive, Twin Lakes

KABMGD64@gmail.com

262-877-2219

Thank you for all that you do!

The Boardwalk

232 Bridge Street, Burlington

262-763-5959

We appreciate all you do!

The Wanasek Group

29606 Durand Avenue, Burlington

wanasek@wanasek.com

262-763-3561

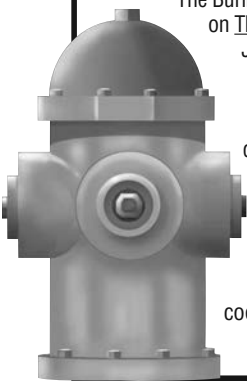
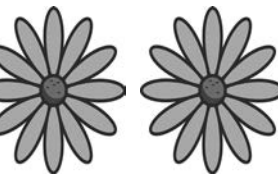
Thank you for your service.



ST. JUDE'S NOVENA

May the Sacred Heart of Jesus be adored, glorified, loved and preserved throughout the world, now and forever. Sacred Heart of Jesus, pray for us. St. Jude, worker of miracles, pray for us. St. Jude, helper of the hopeless, pray for us.

Say this prayer 9 times a day, by the 8th day your prayers will be answered. It has never been known to fail. Publication must be promised. **GTO** 471311



NOTICE TO CITY OF BURLINGTON RESIDENTS
THURSDAY
HYDRANT FLUSHING

The Burlington Water Utility will be flushing hydrants on **Thursdays** during the months of May through July, to reduce and remove the accumulation of rust and iron in the City's water main distribution system. This flushing may cause discolored water in your system. This discolored water is bacteriologically safe and will not harm you.

City residents should check their water supply on Thursdays before engaging in any work that could be affected by the City's flushing of hydrants. Your cooperation and understanding during water main flushing is greatly appreciated.

452982

0% FINANCING AVAILABLE



THE
THIELMANN
GROUP
HEATING & COOLING

BURLINGTON THIELMANN & SON ROTH

\$129*

Air Conditioner
Tune-Up
Special

*Offer expires 5/31/2025

**SAVE
BIG**

ON INDOOR
AIR QUALITY
SOLUTIONS



6 Locations to Best Serve Southeastern Wisconsin!

Call us
(262) 299-6197

Visit us at
THIELMANGROUP.COM

471270

2025 St. Mary Parish

Spring FLING FESTIVAL

MAY 16, 17 & 18

108 McHenry Street, Burlington, WI

St. Mary Campus Playground

FRIDAY, MAY 16

6:00 P.M. - 9:00 P.M.

All Ages Dance

• Grab your dancing shoes and bring your grandma!

FAMILY EVENT

No drop-offs: all children **MUST** be accompanied by an adult!

• DJ Felix providing music

• Knights of Columbus Fish Fry under tent, no drive ups available

SATURDAY, MAY 17

12:00 P.M. - 9:00 P.M.

Spring Fling Festival

• Bags Tournament, Food Trucks, Bouncy House, Kids' Games

• Bakery, Take a Chance Silent Auction

• Craft/Vendor Fair, Sweepstakes and Raffles

• Gravity of Youth Band 5:00 P.M. - 8:00 P.M.

SUNDAY, MAY 18

10:00 A.M - 12:30 P.M

Outdoor Mass

• 10:30 AM Outdoor Mass under the tent

• Knights of Columbus serving hot ham

• Sweepstakes and Lake Geneva Country Meats Drawing



Scan The QR Code To Sign Up
For the Bags Tournament

471429

WISCONSIN

Elkhorn | Delavan | Lake Geneva

Hi-LITER
SERVING SOUTHEASTERN WISCONSIN

**YOUR
FAVORITE
SHOPPER**

is now **ONLINE!**

Digital Subscription is available for this newspaper for **FREE!**

Just go to **southernlakesnewspapers.com!**

Click on **“SUBSCRIBE”** in the menu bar at the top of the page, then click **“e-editions”** to choose your newspaper!

Start your electronic subscription today!

435231



DECK

• STAIN/PAINT • REPAIR • BUILD

LANDSCAPING

• DESIGN • YARD CLEANUP
• MULCH/STONE • HARDSCAPES

PRESSURE WASHING

• HOME • GARAGE • DECK
• PATIO • SHED

Stay at Home, Inc. can provide
many more services for you!



**STAY
AT
HOME** INC.

50+ Home Maintenance Services

“We Enhance The Beauty Of Your Home”

262 • 514 • 3900

www.stayathomemaintenance.com

Locally Owned Family Business!

VETERAN OWNED

★★★★★★

FULLY INSURED

Copyright©2025 Stay At Home Inc. All rights reserved

CALL TODAY FOR YOUR FREE ESTIMATE!

- DECK - BUILD/REPAIR/STAIN • LANDSCAPING
- YARD CLEAN UP • MULCH/STONE
- SHRUB/TREE TRIMMING • PRESSURE WASHING
- PAINTING • GUTTER CLEANING
- HANDYMAN SERVICES • AND MUCH MORE

**ASK
ABOUT
10%
DISCOUNT!**

471518



CALL TODAY FOR YOUR FREE ESTIMATE!

- ☐ DECK - BUILD/REPAIR/STAIN
- ☐ LANDSCAPING
- ☐ PRESSURE WASHING
- ☐ YARD CLEAN UP
- ☐ MULCH/STONE
- ☐ SHRUB/TREE TRIMMING
- ☐ PAINTING - INTERIOR/EXTERIOR
- ☐ GUTTER CLEANING
- ☐ HANDYMAN SERVICES
- ☐ GRAB BARS
- ☐ HAND RAILS
- ☐ RAMPS - BUILD/REPAIR/STAIN
- ☐ AND MUCH MORE!

**DO YOU NEED HELP
WITH MAINTENANCE
AROUND YOUR HOME?**

At Stay At Home, we understand that home maintenance can sometimes feel overwhelming. That's why we offer a range of flexible solutions designed to lighten your load. Whether you need routine upkeep or a more comprehensive project, our experienced team is ready to work with you. We customize every project to meet your specific needs.



DECKS

- Decks
- Ramps
- Hand Rails



LANDSCAPING

- Landscaping
- Yard Clean Up
- Mulch/Stone

Testimonials

“Great as always! That is why I keep calling back” M.R.
“Love my new deck! Very happy” C.M.
“We love Stay At Home! We would be lost without them” L.M

IF YOU DO NOT SEE YOUR NEEDS ON OUR LIST GIVE US A CALL TO SEE IF WE CAN ASSIST YOU.

SAVE NOW!

**10%
OFF** HOME
MAINTENANCE
SERVICES

**RESPOND WITHIN
10 DAYS TO RECEIVE
YOUR DISCOUNT!**

LIMITED TIME OFFER!
*Maximum Discount \$1000.00.
*Cannot be used with any other discounts or offers.

CALL TODAY FOR YOUR FREE ESTIMATE!



**STAY
AT
HOME** INC.

50+ Home Maintenance Services

“We Enhance The Beauty Of Your Home”

262 • 514 • 3900

www.stayathomemaintenance.com

Locally Owned Family Business!

VETERAN OWNED

★★★★★★

FULLY INSURED

Copyright © 2025 Stay At Home, Inc. All Rights Reserved.

471517



we love having you here.®

The Hampton Inn of Burlington is looking to fill the following positions:

HOUSEKEEPERS - Duties include vacuuming, dusting, making beds and cleaning bathrooms. Must be able to work weekends

BREAKFAST ATTENDANT - Early A.M. shift
Light kitchen duties

APPLY IN PERSON AT:
400 N. Dodge Street
Burlington, WI 53105
 Or Email: Jeffrey.vanlysal@hilton.com

466606

GRAPHIC DESIGNER

Continued growth within our group of weekly newspapers and shoppers has caused the need for an additional graphic designer at our Delavan, Wis. facility. This position includes ad design, including web ads, and page design of our weekly publications. Part or full-time position available. Proficiency in Adobe InDesign and Photoshop necessary; prior newspaper experience preferred but not required.

Daytime hours (M,T,W,F). No nights or weekends.

Email resume with salary requirements to dhabrat@southernlakesnewspapers.com

467289

★★★★★★★★★★★★★★★★★★★★

VETERAN'S TRUCK LINE INC.
 in Burlington, Wis. is now accepting applications for:

TRUCK DRIVERS

- Home most nights/every weekend
- Paid health benefits
- Hourly pay starting at \$24.00
- Time & 1/2 over 40 hours
- 6 month \$25.00
- 401(k) w/contribution
- Drive newer equipment
- Paid vacations/holidays
- Paid life/disability
- Must have Class A CDL and pass medical/drug screen

CALL NOW:
(262) 539-4460 Ask for Don
 Go to www.vetstruck.com for applications.

462568




EAST TROY COMMUNITY SCHOOL DISTRICT OPEN POSITIONS

- Food Service Cook - Little Prairie Primary
- Food Service Cook - Prairie View Elementary
- Food Service Cook - East Troy Middle School
- Food Service Floater

Part Time School Year Positions Pay Rate Is \$17.54

For more information, or to apply, visit <https://www.eastroy.k12.wi.us/district/employment.cfm> or call the district office at 262-642-6710

458888



EAST TROY COMMUNITY SCHOOL DISTRICT OPEN POSITIONS

SCHOOL BUS DRIVERS

The East Troy Community School District has a need for confident, reliable, dedicated bus drivers to fill morning and afternoon routes for the year. This is the perfect part-time work for retirees, parents (even those with preschoolers-bring them along!), or anyone looking to help the community and make a little money on the side. We offer a competitive hiring bonus of \$750-\$1,000 for bus drivers. We provide paid training to obtain your CDL and our trainers are excited to help. New bus drivers are also eligible for additional bonuses during and at the end of the school year.

For more information, or to apply, visit <https://www.eastroy.k12.wi.us/district/employment.cfm> or call the district office at 262-642-6710

458886

HELP WANTED

CRASH TEST TECHNICIAN

MGA Research is one of the leading companies in automotive crash testing located outside of Burlington, WI. This role is for a full-time, salaried, entry-level position to prepare vehicles to successfully go through crash tests. This includes instrumenting vehicles with various test devices, photographing and measuring vehicles, setting up video cameras and data acquisition systems, and interacting with global customers. MGA is looking for highly motivated individuals that have a willingness to learn in a fast-paced environment. Applicants must be comfortable using power tools, computers, and other precision equipment.

Please apply at
mgacareers.mgaresearch.com



mga research corporation
 MGA Research is an equal opportunity employer.

381314

Help Wanted

CONTRACT ROUTE OPEN
 ONE DAY PER WEEK - WEDNESDAYS. YOUR VEHICLE. DELAVAN, BRODHEAD AND EVANSVILLE AREAS. WEEKLY CONTRACT PAY. CALL 262-725-7704 CALL TO INQUIRE.

Full & Part-Time Positions Available
 We are looking to add to our Performance Team. Do you know someone that would enjoy working in an automotive shop? We are looking for Full and Part-time General Service Techs. Flexible Hours. Must have a valid driver's license.

Please apply in person.



1051 MILWAUKEE AVE., BURLINGTON (262) 763-7606
 HWY. 36 ACROSS FROM KOHL'S



TRANSPORTATION

Automobiles

2000 CADILLAC SEDAN DEVILLE pearl white, 65,000 original miles, runs smooth, everything works as it should, always stored in a heated garage. Title is lost, but we have all the required paper work. \$5950. best. 262-949-6997

2007 BMW 328XI 4dr Auto Runs great. 169K. Everything works. 1 owner. \$4500. (262) 758-8789

Boats

14 FT. ALUMINUM FISHING BOAT trolling motor, oars, battery. \$395.(262) 742-3665 after 5:00 pm weekdays.

14FT. ALUMACRAFT BOAT

with trailer, 9.9 hp. Johnson motor, professionally maintained. (Receipts available.) Includes motor stand, trolling motor & more. Tom 262-498-2809.

1989 ARRIVA 21 ft 305 V8, good interior, runs good, needs starter. \$1,500. 708-431-4955 Browns Lake, WI

2003 ALUMACRAFT 175 TROPHY W/ Trailer. 90 HP, 9.9HP & equip. 815-389-2480.

25' MAGNUM MARINE 1974 With trailer. Twin 350 Chevys, restored and in great shape. \$25,000. Call 414-530-8300.

JON BOAT WITH TRAILER 18 foot, 25 hp Yamaha F/S. \$1,500. Call 262-206-1725.

Campers and RVs

1994 WINNEBAGO WARRIOR 22' REDUCED TO SELL \$8500.00! V8 454 engine, 97,200 miles. Newer tires, new battery, new sub floor and flooring. Generator, small drop-down bed above cab, couch becomes double bed, table drops to bed and extra double sleeping space in rear. Rooftop A/C works great. Dash A/C needs charge. Rust free, runs good and ready for travel! Located NW Rockford. Call 815-262-1479.

2002 WINNEBAGO 32' Motorhome, Class A. Cummins Turbo Diesel motor with Allison transmission. 2 slideouts, Onan generator. All appliances including microwave, 2 TV's. Everything works. \$27K 608-345-7806

2016 FLEETWOOD TERRA 34B MOTOR HOME 35' 27,000 Miles 3 Slideouts 2 New WI-FI TV's 5.5k Generator. \$79,000 262-206-4164.

2022 COACHMAN FREEDOM EXPRESS 24' Travel Trailer with Q bed. Very clean. \$19,000. OBO. 262-470-4083.

Motorcycles

2007 HONDA GOLD WING Perfect condition, black, new tires, 45K. \$8,600 OBO. 262-458-7026.

Sports/Classic Cars

1949 CHEVY STYLELINE DELUXE 2 Door, New engine, New tires, Clean interior. Runs Great! \$6,995. Elkhorn Text only (708) 785-2440.

Trucks & Trailers

2004 GMC ENVOY XUV 5.3L engine, well cared for. \$2,000 OBO Info: call or text 262-903-0129.

UTILITY TRAILER With tool box and ramps. High speed tires. \$1,500. OBO. Call 224-518-6491



Burlington Auto Parts
 Auto Parts Specialists
mybumpertobumperstore.com burlingtonautopart@sbcglobal.net

FOR ALL YOUR AUTO PARTS NEEDS

Hours:
 Monday-Thursday: 8 a.m.-6 p.m.
 Friday: 8 a.m.-5 p.m.
 Saturday: 8 a.m.-2 p.m.



701 N. Pine Street
 Burlington, WI 53105
 Phone: 262-763-9184
 Fax: 262-763-5290





GENEVA LAKE ARTS FOUNDATION, INC.

Late Spring Art Show

Visit our unique gallery featuring the work of many talented artists

APRIL 17TH - JUNE 1ST
THURSDAY - MONDAY 10AM-5PM

GALLERY 223 | 223 BROAD ST. | LAKE GENEVA, WI 53147





47147

Marty's Restaurant

& Fiesta Hall

210 West Main St., Waterford, WI • (262) 534-5200

SERVING 7 DAYS A WEEK

MOTHER'S DAY BRUNCH & BREAKFAST BUFFET

SUNDAY, MAY 11 • 9:00 A.M. - 2:00 P.M.

Adults \$25.00 • Children \$17.00

Large Selection - Too Many To List

OMELET & WAFFLE STATIONS • MANY DIFFERENT MEAT ITEMS

We can handle any size group

RESERVATIONS APPRECIATED • BANQUET HALL WILL BE OPEN



471475

Tichigan Lake Lions Club

Tichigan Civic Center • 6710 Big Bend Road, Hwy. 164 • Waterford, WI

1st, 3rd & 5th THURSDAYS

Great Family Entertainment

\$1,250 IN PRIZES

Early birds - 6:30 p.m. - \$250 in prizes

Regular - 7:00 p.m. - \$800 in prizes

PROGRESSIVE NUMBER IS #49

Progressive Bingo Weekly Jackpot is up over

\$1,150

QUESTIONS? CALL 414-399-6943 • FOOD, SODA & BEER AVAILABLE



MEAT RAFFLES \$50/\$50 WAFFLE

BINGO POWER BALL JACKPOT OVER \$100

471488



CRUZIN

309

TRANSPORTATION

262-902-7953

Transportation For Your Daily Needs • Up To 14 Passenger Shuttle/Event Bus

Prices Comparable To Ride Shares

WI-FI Available • Airport Runs • Metro Train Runs

Experienced, Reliable & Safe Car Service

ACCEPTING CREDIT CARDS • VENMO • ZELLE • CASH APP

469185

262-716-6029

OPEN DAILY TUESDAY - SATURDAY

WE DO SERVICE CALLS FOR GRANDFATHER CLOCKS

Kessler's

CLOCK CO.

QUALITY CLOCK REPAIR & SALES

160 E. Chestnut Street

(In the loop)

Burlington, WI

KESSLERSCLOCKCOMPANY@GMAIL.COM



389117

LOOK TO US FOR YOUR BASIC PHONE SERVICE

TDS Telecom (serving the exchanges of Bohners Lake and Wheatland) offers the following local exchange telecommunications services to all customers throughout its serving area:


- Voice grade access to the public switched network
- Local exchange service
- Dual tone multi-frequency signal
- Single party service
- Access to emergency service
- Access to operator services
- Access to interexchange service
- Access to directory assistance and
- Toll blocking without charge to qualified low income customers.

Below are the monthly rates for local exchange service:

Residential Monthly Rate*	Business Monthly Rate*
\$21.00	\$23.88

Monthly discounts are available to residential customers meeting certain low income criteria.

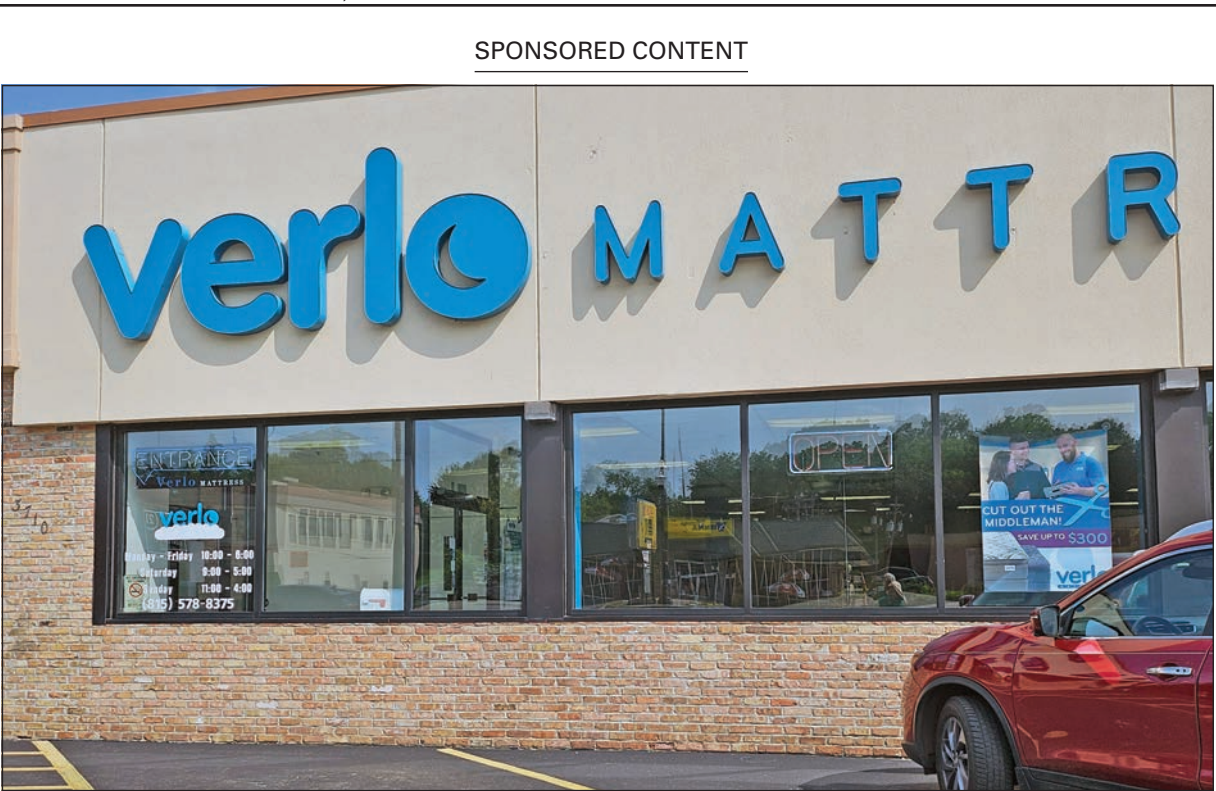
For more information, contact TDS Telecom toll-free at 1-888-CALL-TDS.



*The above rates do not include charges for long distance, operator services, Directory Assistance, 911 emergency service, optional local calling plans, WI TEACH assessment, mandatory local mileage or zone charges, or other state and federal taxes/surcharges.

212195WIBBW/3-25/12930

471466



SANDRA LANDEN MACHAJ Southern Lakes Newspapers

The Verlo shop where mattresses are built is at 3710 W. Elm, McHenry, which also has a showroom. Other showrooms are at 2462 Highway 120, Lake Geneva and at 5150 Northwest Highway, Unit 1, Crystal Lake.

Is it time for a new mattress? Check out Verlo

By Sandra Landen Machaj
CORRESPONDENT

How old is your mattress? Is it still a comfortable place to relax? When you wake up in the morning, do you feel well rested, and did you sleep comfortably through the night?

If your answer to any of these questions is no, it may be time to look for a new mattress.

“Verlo Mattress is a unique mattress company,” said Ray Westman, owner of Verlo in Lake Geneva, McHenry and Crystal Lake. “We do not carry a number of mattress brands but only our own and each of these mattresses, sold in our stores, is built on site in our McHenry store.”



The large showroom in Lake Geneva offers an opportunity to try a variety of mattresses made by Verlo.

People spend about one third of their lives in a bed. When it is no longer giving a comfortable night’s rest, though, people don’t immediately go to a store for a replacement; instead, complaining about poor sleep and a backache.

Even when people finally think of the mattress, they may often discard the idea of it being a mattress problem because the mattress is often considered a staple, something that lasts forever. In reality, no mattress will last forever. It is recommended that the mattress be replaced about every 12 years, maybe sooner if it is not cared for properly.

“The number of years before a mattress needs to be replaced is dependent on a number of things,” Westman said. “First of all, our mattress needs change over the years as our bodies change. And the care that is given to the mattress also determines how long it will last.”

The concept of producing all of a company’s mattresses in one factory, though, soon was to change. In 1958, Guy Day and Dale Williams – two entrepreneurs from Wisconsin who together owned a furniture store in Wheeling, Illinois – decided to add a new item to their business. They would create mattresses that were custom built at the store. Their mattresses would be created to order and because they were self-manufactured, eliminated the middleman.

When entering a Verlo store today, a clean, open environment greets customers. Mattress styles are arranged in pods to allow customers to peruse various styles, firmness and price points. Sales staff will

greet customers and not only answer questions, but share knowledge about mattresses that customers may not know.

“One of the advantages of purchasing your mattress from Verlo is that we eliminate the middleman, making a high-quality mattress for a lower price,” Westman shared. “Our sales people actually are very knowledgeable about our mattresses because they are involved in building them here on site. We can also build the mattress specifically for your needs in about a week from the time it is purchased.”

Mattresses can be made either one-sided or two-sided, with the latter being turned over at regular intervals to allow for even wear. One-sided mattresses do not need to be turned over, but do need to be rotated at regular intervals – again to promote even wear. Verlo produces both kinds.

The custom-made mattresses are produced at the McHenry location for the Lake Geneva, Crystal Lake and McHenry stores. Customer’s needs, which can include making a mattress softer or firmer, are taken into consideration when the mattress is built.

“Once the mattress is built and delivered to the customer, we aren’t through with the mattress or the customer,” said Westman. “We offer a one-year comfort promise on most of our mattresses. If after sleeping on the mattress they find it needs more or less firmness, it can be returned

to have additional firmness added or to be softened once during that period. After the one-year time, the mattress can still be picked up and rebuilt as needed for a nominal fee.”

Because the company creates the mattress on site, Verlo also is able to custom design the mattress for whatever shape, size or firmness is needed.

“We are able to create a special size mattress to fit in your camper or boat and even special shapes such as round mattresses or one to fit a special-sized, built-in bunk bed,” added Westman. “Such custom sizes are often needed here in the lakes area, where boats and recreational vehicles are prevalent, and may need to have their mattresses replaced. We also create mattresses for antique beds, which may also require special sizing.”

Adjustable bed frames are very popular and, according to Westman, provide a healthier way to sleep. By raising the legs, it helps reduce swelling in the lower limbs, and when the head is raised, it allows one to breathe better and snore less. An adjustable bed is a favorite even for those who just enjoy reading or watching television from their bed.

Adjustable bed frames are available in the stores.

“Sleeping on your back is the best way to sleep,” added Westman. Using an adjustable base means that the mattress does not require a box spring. What it does require, however – at least on some models – is a change in the construction of the mattress. A mattress that has a steel border rod must remove a portion of the rod and replace it with a cord to make the mattress more flexible. This way, the mattress will bend when the head or feet are raised.

Prices at Verlo are less than what most other mattress companies have to offer for the same quality, because there is no middleman markup. Local Verlo dealers are at 3710 W. Elm, McHenry (phone: 815-578-8275); 2462 Highway 120, Lake Geneva (phone 262-249-0420); and in Crystal Lake, Illinois at 5150 Northwest Hwy, Unit 1 (phone 815-455-2570).

All locations are open Monday through Friday from 10 a.m. to 6 p.m., Saturdays from 9 a.m. to 5 p.m., and Sunday from 11 a.m. to 4 p.m.



An adjustable frame can add comfort and may also help prevent snoring.

Hi-LITER Classifieds

DISPLAY ADS: (262) 763-2575 | CLASSIFIEDS (262) 728-3411 | FAX (262) 725-7702

CLASSIFIED OFFICE HOURS: MONDAY-FRIDAY 8:30 A.M.-5:00 P.M., CLOSED SATURDAY & SUNDAY DEADLINE: 10 AM • MONDAY

RON'S GLASS BLOCK WINDOWS

Residential Basements & Bathrooms
Mortar Built Security & Privacy • Leakproof Guarantee
ALSO: Tuck Pointing & Chimney Repair
FREE ESTIMATES (262) 441-9100

434079



Wall 2 Wall Painting Inc.

Interior/Exterior Painting Specialists
Residential/Commercial
(262) 514-4055
www.wall2wallpainting.net
FULLY INSURED • IN BUSINESS SINCE 1982

234530

GET IT DONE

FAMILY OWNED AND OPERATED • INSURED AND LICENSED
262-220-2555

- POWER WASHING • GUTTER CLEANING
- TREE REMOVAL TRIMMING AND HAULING
- FENCING DEMO AND INSTALLATION
- PAINTING: INTERIOR & EXTERIOR

451304

Southeast Wisconsin's Premier Roofing Company

OVER 100 NEW ROOFS IN 2024!



Free Estimates
Fully Insured
Licensed

Serving Racine, Kenosha and Walworth Counties

Celebrating 17 Years in Business!

Tearoffs, Re-Roofs, New Construction • Soffit & Fascia
Seamless Gutters • Downspouts • Gutter Protection
EPDM Rubber • Flat Roofs • Blown-In Insulation

Visit our website to view our amazing time lapse video
"These Guys are Fast"

The Roofing Experts (262) 515-4385
Visit us online at: www.accentroofingonline.com

468055

Your Local Exterior Contractor for 50+ Years

MATHER'S

IMPROVEMENT SERVICE LTD.
ABC SEAMLESS

- Roofing
- Siding
- Gutters

- Windows/Doors
- Soffit/Fascia
- Awnings



262-763-7884 
www.mathersimprovement.com

411972

MITCHELL PLASTERING

(since 1989)

- Plastering & Thincot
- New Home • Remodeling
- Repairing • Free Estimates

(262) 642-9247

13381

Asphalt Maintenance Co.

- Sealcoating • Crack Filling • Striping •

20% OFF
Act Now!

FREE ESTIMATES
262-767-2878
Burlington

471224

Summer Sale

CABINETS

Don't Replace, Don't Reface –
Cabinet Painting

Brighten your kitchen with an ultra-durable painted finish at a fraction of the cost to replace/reface.
Check out the photo gallery on our Facebook Page!!

INTERIOR INNOVATIONS

Dan & Nancy Boyle • 262.638.9670
39 Years Experience

471568

Adam's Tree Service & Firewood



- Large Tree Removal
- Manual Climbing
- Bucket Trucks
- Stump Grinding & Trimming

262-806-6260

10% off with this coupon

318074

<h3>TREES</h3> <p>From \$199</p> <p>1-2" Caliper Installed</p> <ol style="list-style-type: none"> 1. Red Maple 2. Bradford Pear 3. River Birch 4. Flowering Crab 5. Eastern Redbud 	<h3>PINES</h3> <p>From \$299</p> <p>4'-6" Installed</p> <ol style="list-style-type: none"> 1. Upright Juniper 2. White Pine 3. Blue Spruce 4. Norway Spruce 5. Viburnum 	<h3>SHRUBS</h3> <p>From \$29</p> <p>1-2 Gal. Installed</p> <ol style="list-style-type: none"> 1. Summer Weigela 2. Knockout Roses 3. Dwarf Dogwood 4. Goldflame Spirea 5. BoBo Hydrangea
---	--	---

OTHER TYPES AVAILABLE, JUST ASK! (FREE ESTIMATES)

DECK REPAIR & RESTORE SAVE \$\$\$

BRICK RESTORATION & REPAIRS SAVE \$\$\$

Package Deal #1
Brick Patio with 1 Tree, 6 Bushes, Landscape, Lighting and Mulch
From \$3,999

Package Deal #2
Wood Deck with 1 Tree, 6 Bushes, Outdoor Lighting and Mulch
From \$2,999

Package Deal #3
Composite Deck with 6 Bushes, Outdoor Lighting and Mulch
From \$4,999

Visit LandscapesbyTonyNorton.com Save\$\$\$

35+ Years In Business In Your Area!
LANDSCAPES BY TONY NORTON
877-514-7336 Text/Call

Local Full Service Plumber

262-705-3315
FAMILY OWNED & OPERATED



24-Hour Emergency Service

highstandardplumbingllc@yahoo.com
www.highstandardplumbingllc.com

Fully Licensed, Insured & Bonded in Illinois and Wisconsin
WI License #121-6974 • IL License #055-044845

470233

Home Improvement

ELIMINATE GUTTER CLEANING FOREVER! LeafFilter, the most advanced debris-blocking gutter protection. Schedule a FREE LeafFilter estimate today. 20% off Entire Purchase. Plus \$10% off Senior & Military Discounts. Call **1-877-920-3533 (WCAN)**

NEED A HAND

With carpentry, plumbing or electrical problems kitchen & bathroom remodeling? I'm a Jack of All Trades & Master of 25 years experience. Replacement, repair & new installations. Insured. Call Tom at TJ Home Improvements. 262-492-5433 Serving Waterford & Burlington Areas

PAVE-N-SEAL LLC.

Seal Coating • Striping
262.210.8953
Waterford Wis.
Fully Insured • Free Estimates

292261

COMPLETE TREE SERVICE LLC

(262) 767-8733

Tree Trimming & Removal
Stump Removal • Lot Clearing
Fertilizing/Deep-root Feeding
Cabling & Bracing • Aerial Truck
Seasoned Firewood • Chips for Mulch
Residential & Commercial

The Weis Family
50+ Years Combined Experience
Fully Insured • Free Estimates

294928

TUB RESURFACING

We can resurface your tub, tile, sink or countertop with a great new finish. Our finish can be applied to any fiberglass, porcelain, ceramic or laminate surface - most work completed in 1 day!
5-YEAR WARRANTY! *Call today for a quote!*
rhinorefinishing.com



RHINO REFINISHING SERVICES
(262) 843-9474

308777

LANDSCAPING SERVICES

LAWN CARE

- Spring & Fall Cleanup
- Lawn Mowing
- Trimming
- Mulching
- Edging
- Weeding
- Power Raking
- Lawn Aeration
- Sod Installation
- Seeding
- Tree Services

BRICK WORK

- Retaining Walls
- Brick Steps
- Fire Pit
- Patios
- And MORE...

FREE ESTIMATES



Creekstone Landscaping
Walworth, Wis.
(262) 649-6916
(815) 403 0026
creekstonelandscaping@hotmail.com



HENNING LANDSCAPE MANAGEMENT, LLC

Burlington, WI

DESIGN • BUILD • MAINTAIN

262-767-9016
www.HenningLandscape.com
info@henninglandscape.com  



Arbor IMAGES
INCORPORATED
Complete Tree & Shrub Care & Landscape Materials
262-763-4645

- Tree & Shrub Trimming & Removal
- Tracked Aerial Lift
- Development/Lot Clearing
- Custom Lumber Sales
- Deep Root Fertilization
- Insect & Disease Control

- Hemlock & Cedar
- Enviro Colored Mulch
- Hardwood Bark
- Natural & Wood Chips
- Decorative Stone & Gravel
- Topsoil & Compost

www.arborimages.com
W573 COUNTY TRUNK JS(State Road 11) Burlington, Wis.
Showroom Hours: Mon.-Fri. 7:30 a.m. to 4:00 p.m., Sat. 7:30 a.m. to 12:30 p.m.

BUSINESS & SERVICES

Misc Services

POWER WASHING American Tree Service. Junk removal and handy man. Insured. 262-857-2939

ANCHOR CONSTRUCTION

- Since 1977
- Concrete Work
- Foundations
- Garage Slabs/Driveways
- Patios/Walks/Stoops
- Replacements

**Fully Insured
Free Estimates**

**262-325-9708
815-482-9542**

FOR RENT

Apartments

1 BR GROUND LEVEL APT. Fridge/Range, A/C., water included, no smoking/pets, single occupancy. \$550. mo.+ electricity & sec. Avail. now. 262-210-2962.

Room for Rent

WAYSIDE/ROOM FOR RENT On the square in Walworth. For a single person only. Rent by month only. Call or please leave a message. 847-739-6789

Other Services Offered

FRITZ BARN PAINTING Rusty Roofs, Metal Buildings. Free Est. 608-221-3510 or 414-369-7263 (WCAN)

**Painting
Wall Papering
Staining &
Texturing**

Nick Wiemer
Painting/Decorating
Free Estimates - Insured
Call **763-7464**

13294

SELF STORAGE SPACE
Burlington Industrial Park
Different sizes available
More information
763-5806

230434

**CALIVA
SECURITY
STORAGE**

262-763-8708

13295

REAL ESTATE

Other Real Estate

PUBLISHER'S NOTICE All real estate advertising in this newspaper is subject to the Fair Housing Act which makes it illegal to advertise any preference, limitation or discrimination based on race, color, religion, sex, disability, familiar/ status or national origin, or an intention to make any such preference, limitation or discrimination. Familial status includes children under the age of 18 living with parents or legal custodians, pregnant women and people

securing custody of children under 18. This newspaper will not knowingly accept any advertising for real estate which is in violation of the law. Our readers are hereby informed that all dwellings advertised in this newspaper are available on an equal opportunity basis. To complain of discrimination call HUD toll-free at 1-900-669-9777. The toll-free tele phone number for the hearing impaired is 1-800-927-9275. EQUAL HOUSING OPPORTUNITY

It is a great time to sell!

Get your **FREE** Estimated Value on your Home by scanning this QR Code

SCAN THE CODE

RENATA GREELEY

#1 REAL ESTATE AGENT IN RACINE COUNTY SINCE 2009

JUST GOTTA GET RENATA!

LOOKING TO GET THE MOST VALUE OUT OF YOUR HOME?
Call Me Today For Guidance From Your Racine County Realtor!
262-210-6956



**7134 N. Tichigan Road
Waterford
\$1,895,000**

Impressive Property or Private Retreat. 3 Newer Multifamily Units with 2 Piers on Tichigan Lake.



**29323 Riverview Lane
Waterford
\$499,000**

3BR 2BA Chalet Priced to sell! Huge yard and loads of room for expansion.



#1 REAL ESTATE AGENT IN RACINE COUNTY SINCE 2009



**5633 Contour Road
Waterford
\$799,000**

3BR 3BA Log Home on 6 Lots in Waterford with gorgeous water views.



**4330 Buckey Street
Waterford
\$599,000**

3BR 3BA contemporary ranch with large heated garage on 1.2 acres.



**494 Woodfield Circle
Waterford
\$425,000**

2BR 2BA Luxury End Unit Side by Side Condo! Full size windows in LL for expansion.

(262) 210-6956
rgreeley@shorewest
renatagreeley.com

FOR SALE

Announcements

CLASSIFIED IN-COLUMN ADS cannot be credited or refunded after the ad has been placed. Ads canceled before deadline will be removed from the paper as a service to our customers, but no credit or refund will be issued to your account.

DISCLAIMER NOTICE This publication does not knowingly accept fraudulent or deceptive advertising. Readers are cautioned to thoroughly investigate all ads, especially those asking for money in advance.

Burial Needs

2 CEMETERY LOTS In Rose-lawn cemetery, buy 1, get 1 free. 262-903-1084 bdsoplanda@genevaonline.com

7 CEMETERY PLOTS Willing to sell as a group or individually. Located at Roselawn Memory Gardens 3045 WI-67, Lake Geneva, WI 53147. **This is a private sale.** Contact Randy, the seller at randy@slpublishers.com.

Collectibles

SET OF WALKING LIBERTY Half Dollars Red Book \$4,250. 7 perfect MS70 Silver Eagles. About 3,000 Wheat Pennies. Wheat Penny Books for 15 cents each. All above for \$3,000. Firm. Call Bob Yopp 262-248-0192

Horses

MANURE REMOVAL SERVICE. Cleaning, loading, hauling. 262-492-5819

Landscape Materials

TOP SOIL, COMPOST & MULCH 262-662-0201

Misc. For Sale

15 ANTIQUE BICYCLES \$195.00 each, or all 15 for \$1,350. Elkhorn. 262-949-6997.

BLACK WALNUT PLANKS 2" x 2' x 10' \$300. ea. 2" x 2' x 8' \$250. ea. 8" x 10" x 12' \$500. Or make offer for all. 414-530-8300.

DONATE YOUR CAR, TRUCK, BOAT, RV and more to support our veterans! Schedule a FAST, FREE vehicle pick up and receive a top tax deduction! Call Veteran Car Donations at 1-844-406-2647 today! (WCAN)

ELECTRIC SENSOR REPAIR Fence and Corral Supplies. We also have Contractor Referrals, Tuff Built, Diamond Bar, Ash Supplies LLC. 715-352-3599 - 234260 CR-H Edger, WI 54426 (WCAN)

LeBlond LATHE 9" SWING 4' BED Plus attachments. \$1000. Call 414-530-8300.

Estate Sales

N8633 STONE SCHOOL RD May 8, 9 & 10,9-4. Power tools, fishing/hunting/ Large & small pet transporter. 6 ft steel fence post. Milk crates/ cans. Pails. Desk, TV stand, night stand. Small refrigerator, speakers, baby stroller & bassinet. Patio table, umbrella & chairs. H/H etc.

Burlington Garage Sales

1442 FAIRLAWN BLVD Country Estates. May 8 - 10. 9 - 4. Men's & women's plus sz clothing, jewelry, lots of misc, HH & other accessories

724 CRESTWOOD DR. BURLINGTON Multi family Rummage, May 8th and 9th 8am to 5pm Rain or Shine Tons of household items, vintage card table, bar stools assorted furniture items. Household, holiday decorations, lawn decorations, Kids clothes boys to size 3, girls sizes 6, 7, 8, tons of toys newborn to toddler, women and men clothing. So much to list!

GLEN at STONEGATE by Walmart Multi Home May 15, 16, 17 8-4. IKEA Shelves, Inflatable Kayak, Bench, Table & Chairs, Wash/Dryer, Queen Bed, TV, Furniture, T Redlin Paintings, Wood Art/Lake Decor, Craft & Stampin' Up Supplies, Plants, HH Items, Toys, Bikes, Hamster Cage, Clothing - Toddler, Teen, Adult Male, Female, MORE!

PLANT/BAKE/ RUMMAGE SALE

Large multi-family sale with perennials, household items/decor, games, clothes and much more!

**ST. JOHN THE DIVINE
EPISCOPAL CHURCH**
216 East Chandler Blvd.
Burlington, WI

**FRIDAY, MAY 9 • 9AM-2PM
SATURDAY, MAY 10 • 8AM-2PM**

ROOF TOP CARRIER BOX \$69.00. Text Only. (262) 949-6997.

Notice

FLEA MARKET SHAWANO COUNTY FAIRGROUND SUNDAY'S!!! No reservations needed call 715-526-9769 for more information. (WCAN)

Pets

AKC SAINT BERNARD PUPPIES Born 3/14/25. Very Friendly Family Raised Vet checked 1st shots \$1500 each Call 715-223-8803 (WCAN)

Wanted to Buy

FIREARMS 1 piece or collection. Federally licensed dealer. Lake Geneva Antique Mall. 829 Williams St. Lake Geneva, Wi 262-248-6345

OLD FISHING EQUIPMENT Collector will pay cash for old fishing equipment. (rods, reels, lures, etc.) Call Bill 262-448-1126. Please leave a number.

WANTED: OLDER / VINTAGE CAMPER Trailer/RV & Older Golf Cart. Call or Text 262-903-7522.

WISCONSIN PRECIOUS METALS

FREE APPRAISALS

Gold & Silver Coins, Jewelry, Sterling Silver, .999 Bars/Rounds (any size), Diamonds, Silver Contacts, Industrial Wire, Thermo Wire, Dental

Call for any item you'd like to melt/sell.

We exclusively provide a "stone retrieval" service.

All gemstones can be returned.

PRICES AS OF MAY 5, 2025

Gold \$3,314.00 oz. ▪ Silver \$33.28 oz.

CALL TODAY FOR YOUR PRIVATE APPOINTMENT.

262-492-5334

**647 Main Street, Suite 200B
Lake Geneva, WI 53147**

**Free parking behind our building.
Call for details.**

471477

AUCTIONS, GARAGE SALES

East Troy Garage Sales

N9092 EAST SHORE RD. LAKE BEULAH AREA Weds. May 14-Sun. May 18, 8-5. HUGE SALE! Large downsizing sale prior to Moving. Yard bench, decorative treasures, rugs, lamps & some furniture. Thousands of household items.

Muskego/Franklin Garage Sales

W151 S6535 GLENBROOK DRIVE May 8,9 & 10, 8am-4pm. Antiques: furniture, glassware and other. Tools,tool chest & many garage items. H/H and more.

Waterford Garage Sales

25 HOME SUBDIVISION RUMMAGE May 15 - 17, 9:00 am - 4:00pm. 639 Hickory Hollow Road-Maps available here. Behind Cotton Exchange. Kettle Glen/Fairview Est. HUGE SALES!

Trevor Garage Sales

24931 113TH STREET MAY 15, 16 & 17th, 9am-4pm. Sunset Ridge Subdivision. Crafts, Holiday decor, leather coats & jackets, H/H, and much more!



JUNE 2ND, 2025 FORT ATKINSON CONSIGNMENT AUCTION

LET'S GET YOUR EQUIPMENT SOLD CONSIGN NOW!

ACCEPTING CONSIGNMENTS MAY 12TH - MAY 16TH
Drop Off: N1547 Business 26, Fort Atkinson, WI 53538

Let your items shine in front of our massive nationwide audience!



Over 196,000 Registered Bidders From All 50 States!

OUR MARKETING BRINGS THE BUYERS TO YOU
GET TOP DOLLAR WITH LESS HASSLE

Call Today! 920-691-2922

WWW.HANSENAUCTIONGROUP.COM



471118

verlo

MATRESSES

Spring

SAVINGS

EXTRA
FACTORY DIRECT SAVINGS
WITH THESE COUPONS!



v1 FIRM 1-Sided No Flip

QUEEN SET STARTING @

\$699

TWIN \$499 FULL \$599 KING \$899



v3 PLUSH 1-Sided No Flip

QUEEN SET STARTING @

\$999

TWIN \$749 FULL \$899 KING \$1399



v5 FIRM 1-Sided No Flip

QUEEN SET STARTING @

\$1599

TWIN \$1049 FULL \$1349 KING \$1999



v7 PLUSH 1-Sided No Flip

QUEEN SET STARTING @

\$2099

TWIN \$1399 FULL \$1949 KING \$2699

SAVE UP TO
\$200 OFF
v3 Set Purchase*

SAVE UP TO
\$250 OFF
v5 Set Purchase*

SAVE UP TO
\$350 OFF
v7 Set Purchase*

SAVE UP TO
\$450 OFF
v9 Set Purchase*

*On set purchase with factory select covers. Not applicable on previous purchases. One coupon per set purchase. See store for details. Offer ends 5-18-2025.

FINANCING AVAILABLE See store for details.

Adjustable

BED BASES



Twin XL Starting @

\$399

With Verlo Mattress purchase.
Does not apply to previous
purchases. See store for details.



Great for watching TV or reading in bed
Reduces snoring & acid reflux effects
Alleviates lower back, knee & leg pain | Aids in circulation

Custom

Mattresses

RVs, Campers, Boats
& So Much More!



BUY MORE \$AVE MORE
Mattress Protectors | Pillows | Headboards

ACCESSORY BUNDLE SPECIAL
30% OFF 3+ Items
-OR-
20% OFF 2 Items



LAKE GENEVA
2462 Hwy 120
262.249.0420

CRYSTAL LAKE
5150 North West Hwy
815.455.2570

McHENRY
3710 West Elm St.
815.578.8375

verlo.com
1-866-99-VERLO
(866-998-3756)

