

Trolley Times

The Official 2025 Visitors Guide of
the East Troy Railroad Museum



2002 Church Street, P.O. Box 943, East Troy, WI 53120 • 262-642-3263 • www.easttroyrr.org

MAKE MEMORIES THAT LAST A *Lifetime*

Visit the East Troy Electric Railroad to experience what these trolleys and trains were like in a simpler time. Our historic interurban railroad cars and trolleys take a scenic 14-mile round trip through beautiful Southeastern Wisconsin.

Meander through the museum in our Depot, where kids can be trolley motormen, discover the joy of model railroads, and learn about electricity. The gift shop features a unique selection of railroad souvenirs for all ages.

After your train ride, partake of a delicious meal at East Troy House or at East Troy Brewery – both on the nearby square in East Troy. Also, in East Troy you will find Gus's Drive In and LD's BBQ.

You may purchase your tickets in advance on our website, and walk-up tickets are also usually available. Board our trains at the Depot in East Troy or at the Depot behind The Elegant Farmer in Mukwonago. Train schedules, ticket prices, and equipment are subject to change without notice.

The amenities

- Parking is free at the museum.
- Smoke-free trains run rain or shine.
- Discover, Visa and MasterCard are accepted.
- Public washrooms are available in the Depot.

EAST TROY RAILROAD MUSEUM 2025 SCHEDULE

FRIDAYS • JUNE 6 TO AUG 29

Eastbound, departs East Troy Depot
10 a.m., Noon, 2 p.m.

**Westbound, departs
Elegant Farmer Depot**
11 a.m., 1 p.m., 3 p.m.
(3 p.m. not a round-trip)



SATURDAYS • MAY 3 TO OCT 25

Eastbound, departs East Troy Depot
10 a.m., 11 a.m., Noon, 1 p.m., 2 p.m., 3 p.m.

Westbound, departs Elegant Farmer Depot
11 a.m., Noon, 1 p.m., 2 p.m.,
(3 p.m. and 4 p.m. departures are not round trips)

SUNDAYS • JUNE 1 TO OCT 26

Eastbound, departs East Troy Depot
Noon, 2 p.m.

Westbound, departs Elegant Farmer Depot
1 p.m., 3 p.m. (3 p.m. not a round-trip)

All trains go to Indianhead Park
between May 3 and August 31.

FARES

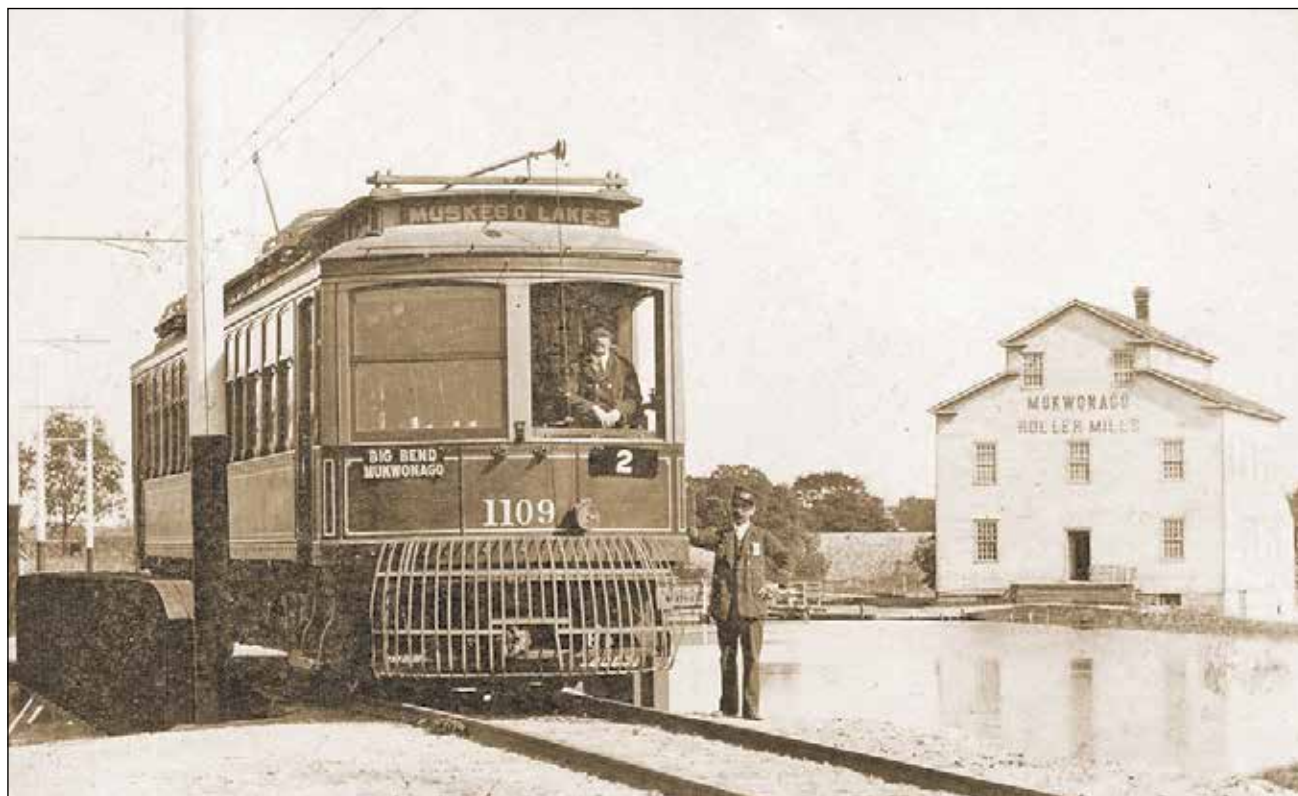
Adults \$17
Seniors (65+) \$14.50
Children (3-14) \$11 (all fares are plus tax).
Children 2 and younger ride for free.

Harvest Fest • September & October
Adults \$18
Seniors (65+) \$15.50
Children (3-14) \$12 (all fares are plus tax).
Children 2 and younger ride for free.

We recommend purchasing tickets online in advance for specific departures.
All train schedules can be found on the East Troy Railroad Museum website at
www.easttroyrr.org/schedule.

PUBLISHED BY

East Troy Times & Southern Lakes Newspapers, LLC
1102 Ann St., Delavan, WI 53115 • 262-728-3411
in conjunction with **The East Troy Railroad Museum**
2002 Church St. P.O. Box 943, East Troy, WI 53120
262-642-3263 • www.easttroyrr.org



above: Car 1109 with Motorman and Conductor at Mukwonago back when the line opened in 1907. **at left:** Car 26 is the oldest car in our fleet, a 1908 Sheboygan Interurban car.

EAST TROY RAILROAD
MUSEUM PHOTOS
Trolley Times

EAST TROY RAILROAD

Riding history

In 1907, The Milwaukee Electric Railway and Light Company (TMER&L) started rail service from East Troy to Milwaukee, and it was a game changer.

Not only did passengers now have nine daily trains to Milwaukee to choose from, but farmers also had a much faster way to transport products such as milk to the big city.

Since that first day, there have always been trains riding on these rails. Even though the TMER&L halted passenger service from East Troy in 1939, the Village of East Troy wisely purchased the tracks from East Troy to Mukwonago to provide a connection for the local industries that depended on the railroad.

For the next 46 years this village-owned railroad hauled freight cars

between East Troy and Mukwonago, the freight cars continuing onwards via an interchange with the Soo Line (now Canadian National) that still exists.

In 1972 there were some Wisconsin-based trolley car volunteer hobbyists that needed a new home. On Memorial Day weekend 1972, the first revenue passengers in 33 years once again rode the rails from East Troy to Mukwonago under wire.

Between 1972 and 1985 the village moved freight cars during the week and the volunteers had folks enjoying the trolleys on the weekends.

In 1985 the village leased the rail line to the volunteer organization, and in 1995 the volunteers purchased the entire railroad from East Troy. Since then, the East Troy Railroad Museum has been the annual destination for nearly 25,000 rail enthusiasts, families and folks that just

want to "ride history." The entire railroad is still staffed by volunteers who have a passion to keep this "jewel" alive and operating.

We have so many fun ways to enjoy this history, from riding our cars, to having dinner on a train, to our seasonal family fun trains, or by viewing the hundreds of historical pieces on display in the museum. We are one of the only museums in the nation that can still claim to operate on the original rails.

When one takes a ride with us, you will receive a narrated tour of what it was like to rely on this vital railroad. We encourage you to visit and really "ride on history." Check out our website at www.easttroyrr.org.

See you on the train!

~ Jim Feyerherm
Operations Manager

MUKWONAGO



ANIMAL HOSPITAL

SERVICES WE OFFER:
Preventative Medicine • Vaccinations • Surgery
Diagnostics • Dentistry • Laser Therapy

NOW ACCEPTING NEW CLIENTS
Call Today To Make An Appointment
(262) 363-4557

www.mukwonagoanimalhospital.com

Wonago Play?



NOW OPEN

Schedule play days in our spacious indoor/outdoor facility!

PACKAGES AVAILABLE

Call Today to reserve your spot!



HOURS:
Monday-Friday
7:30 a.m.-7:00 p.m.



433325



**1065 N. Rochester Street
Mukwonago, WI 53149**

James R. Taylor

and Sons INC.

*Family Owned & Operated
For 3 Generations*

- Roofing
- Remodeling
- Siding
- Windows
- Kitchens
- Baths
- Additions



WWW.JRTAYLORANDSONS.COM • 262-642-7970

Keeping the line clear and maintained

Our team of skilled volunteers, maintains our 7.5 miles of track and the 330 wooden poles that hold up our trolley overhead wire.

In the springtime we burn off long grass and brush to control overgrowth and encourage native vegetation.

Each week, to inspect the track and overhead line, we drive the line in a track car (Speeder) or a specially outfitted "hi-rail" truck which can drive on both

roads and railroad tracks.

We are enormously grateful for the many gracious donations of poles, ties, and specialized equipment. Donations such as these enabled us to replace more than 400 ties in 2024.

We extend our thanks to our volunteers and donors for keeping the line ready for the safe and efficient operation of our trains.



INTRODUCING *Dustin Robinson*

Dustin joined us as a motorman in 2010, since then he has been an exceptional volunteer with a passion for keeping history alive.

Between diagnosing issues with our cars and jumping in to help on just about any aspect of the museum it's no surprise that he has become known as the "go to" person.

Dustin is currently a journeyman electrician and department supervisor with Pieper Power. He resides in Hales Corners with his wife Haylee (who also happens to volunteer here!).

With the many hats Dustin wears, he has connected with volunteers from every interest at the museum. In 2016 Dustin was awarded volunteer of the year a few years ago and often newer volunteers vote to award this to him again.

Stop in and meet this dedicated volunteer and hear his story firsthand.



2025 Lineup of Events

Milwaukee Day

June 28

Celebrate Milwaukee's electric railroading history with a chance to see and ride on an historic Milwaukee Streetcar or a newly-restored Chicago North Shore and Milwaukee Silverliner car. Work cars from The Milwaukee Electric Railway & Light Company (TMER&L) will be on display too, along with historic tickets and timetables.

Chicago Day

July 12

Celebrate Chicago's railway history with a centennial celebration of our three CTA cars. We also will have our six operating Chicago South Shore & South Bend Railroad cars, originally built in the late 1920s. National Park Rangers from Indiana Dunes National Park will be on hand to explain the history of the South Shore Line.

Railfan Day

Aug. 23

On Railfan Day we take all of our equipment out of the barn and put it on display. You can ride a different rail car on each trip of the day. Once again, we are offering fun family activities like scavenger hunt, miniature train rides, and operating model railroads.

Beer Tasting Train

Aug. 30

Join us for a fun and educational beer tasting train! Enjoy five different beers while traveling the route of the East Troy Electric Railroad.

The train is a joint event with Black Point Estate on Geneva Lake. A historian and beer aficionado from Black Point serves as our host, and Toothpicks, our wonderful caterer, provides the hors d'oeuvres.

This 2-1/2 hour event starts and finishes at the East Troy Depot. Book your seats online under our Dinner Train heading at: easttroyrr.org.

Harvest Fest Trains

Sept. 6 through Oct. 26

Harvest Fest Trains will run between the Depot and The Elegant Farmer, where you can enjoy apple picking, a corn maze, and hayrides.

You may start your round-trip at either the East Troy Depot or the Elegant Farmer. Visit our website to see the schedule and purchase your tickets online in advance. Visit our website to see the schedule and purchase your tickets online in advance.

Trick or Treat trains

Oct. 3, 10, 17, 24

Bring your kids or grandkids in costume and take a train from the Depot in East Troy to Jim Brynes Memorial Park, where kids can go "Trick-or-Treating," play games, and enjoy the playground equipment before our trip back to East Troy.

Christmas Parade Train

Dec. 6

The parade train brings Santa on his sleigh from The Elegant Farmer to East Troy for the annual Tree Lighting Ceremony in the Village Square. The train, which carries on a tradition started by Milwaukee Schuster's Department Stores, is lit up like a fireworks show and plays Christmas music while Santa stops to greet kids and their parents at every railroad crossing.

Christmas Trains

Nov. 28, 29, 30

Dec. 5, 6, 7, 12, 13, 14, 19, 20, 21

Our magical ride will take you a half hour ride from our East Troy Depot, 2002 Church St., East Troy, to Santa's workshop located at the Elegant Farmer. Here children can visit Santa and get a photo taken with the jolly elf himself! Santa's workshop wouldn't be complete without some hot chocolate and cookies! Children receive a special gift on the return to East Troy.



Passengers enjoy a ride on Car 846, our historic Milwaukee Streetcar.

SUBMITTED PHOTO Trolley Times



Volunteers at the East Troy Railroad Museum spent many hours restoring Car 33, which was put back into service several years ago.

SUBMITTED PHOTO Trolley Times

Sunday Brunch Train Sept. 28

Our Sunday Brunch Train will run on Sept 28. Your three-course meal starts with a breakfast charcuterie board, followed by a crustless cheese and spinach quiche, finishing with a braided maple and pecan Danish. Coffee and juice are included.

Enjoy a two-hour round trip on our beautiful dining cars with views of the Kettle Moraine countryside outside your picture windows.

Please visit the East Troy Railroad Museum website for more information and to book your reservations. The dress code is casual, and restrooms are on board.

The Picnic in the Park July 20

A kid friendly Family Picnic Train will run on Sunday July 20.

This year we will take Train Cars #9 and #13 to Jim Brynes Memorial Park in East Troy for a true picnic in the park. Everyone will receive a voucher for a free meal from Frank's Lunchbox Food Cart while at the park. Kids can play on the new playground equipment before and after eating.

A coupon for Ice Cream at a local shop will also be provided at the end of the train trip back to the East Troy Depot.

Reservations are available through our website at www.easttroyrr.org.

Charter your own train!

The East Troy Railroad Museum offers private charters designed to meet your specific needs.

From business lunches to anniversary parties, private charters can be used for:

- Birthday Parties - for all ages
- Bachelorette and Bachelor Parties
- Business Outings / Team Building
- Weddings
- Anniversaries
- Social groups
- Family reunions
- Office parties

Chartered trips may make stopovers with advanced planning. There are two parks along our route, plus the Elegant Farmer.

You can customize your event by providing live entertainment, bringing your own special food, adding displays, giving business presentations, or just riding the rails. You can also choose from several luncheon or dinner menus developed specifically for our Charter Services.

For special occasions, table arrangements may be reconfigured to accommodate musicians, wedding cakes,

displays, or anything else you want. Just give us a call to work out the details.

The railroad operates charters from mid-May through October, and they may be arranged for any day of the week. Charters can be from 30 minutes to two hours in length and can be extended for an additional charge. Docents aboard each train will also share the history of the railroad.

For more information or to make reservations, email charters@easttroyrr.org or call 262-684-9148.

Why not join our volunteer family?

For people who volunteer at the East Troy Railroad Museum, it feels like you become part of a second family. Only this family runs a railroad. And we need every member of the family to do his or her part to make it a smooth-running operation. It is challenging, it is fun, it is educational, and you know your work is appreciated.

Some volunteers can only give a couple of days a month and others may put in 100 days a year. Some want to work in areas where they bring experience and are comfortable with the tasks. Others want to be challenged by learning new skills and look forward to doing something completely different than what they do in their "day jobs."

The variety of tasks needed to operate a railroad and museum give people plenty of options. So let us know what interests you.

We have ways to contribute from selling merchandise in the gift shop to being a motorman (or woman) on our trains, to maintaining historic equipment, to helping put together this newspaper.

What we all have in common, though, is the desire to see things happen and to preserve this historic railroad. Together we deliver the Museum's Mission "To engage visitors in the heritage of electric interurban railways and trolley systems through restoration, preservation and operation of historic equipment."

We invite you to stop by to talk with one of the volunteers about what it's like to volunteer here. Interesting, involving, and rewarding tasks await you. For more information visit www.easttroyrr.org/volunteer-with-us or call us at 262-642-3263.

Matt Wrzeszcz, Rich Burger and Kevin Jensen prepare to depart from the railroad museum.



EAST TROY RAILROAD PHOTO Trolley Times



above: There are a variety of tasks with the East Troy Railroad that rely on volunteers, such as this crew, shown on the Speeder. top: East Troy Railroad volunteers enjoy lunch at the volunteer center before continuing with their tasks.

EAST TROY RAILROAD PHOTOS Trolley Times

Mary Ann Jacobsen volunteers behind the ticket counter in the East Troy Railroad Depot, waiting to greet visitors.

TOM FLEMING PHOTO Trolley Times

BECOME A MEMBER

More than 300 people support the East Troy Electric Railroad through annual memberships.

Membership provides you with unique benefits including free rides. By being a member, means you also help preserve this last remaining portion of Wisconsin's once vast interurban system and support our work showcase historic electric railroad cars that ran on interurban systems in Wisconsin, Illinois or Minnesota.

MEMBERSHIP LEVELS

We offer membership levels to fit every situation, memberships include:

- Individual at \$50/year
- Couples at \$75/year
- Family of Four at \$120/year
- Conductor's Club at \$250/year
- Motorman's Club at \$2,500/year.

All memberships include free rides for the member or member family for the year, plus reduced fares and pre-sale

access for special events.

You also receive 10% off your gift shop purchases. Conductor's Club and Motorman Club members receive general admission passes for friends and special members-only train events.

Also, at the Family Membership level and higher, you are automatically a member of the National Association of Reciprocal Museums. This means you can go to more than 1,100 museums, zoos and botanical gardens for free or at a significantly reduced rate.

You just need to show your East Troy Railroad Museum membership card when you visit a NARM location. Visit narmassociation.org to see all the member museums and attractions.

If you would like to join, please ask for a membership form in the East Troy Depot. Or visit our website to purchase a membership online at easttroyrr.org/membership.

Supporting the East Troy Railroad Museum

Your generous contributions are critical for achieving our vision to "make memories that last a lifetime." Contributions are a significant part of our revenue and are necessary for operations, restoration and preservation efforts.

If you are a donor, we thank you for your support. If you aren't a donor yet, we invite you to support our mission.



Memberships – We have multiple levels of memberships available, including individual, couples, family, Conductor's Club and Motorman's Club. Most of the memberships include admission at museums in The North American Reciprocal Museum network.

Donations – We are glad for any donations we receive. These typically include cash, credit card, in-kind, property, and securities. We have several levels of recognition for your contributions. Programs are available for one-time giving or scheduled giving.

Matching Gifts – Many employers have matching gift programs for current employees and retirees.

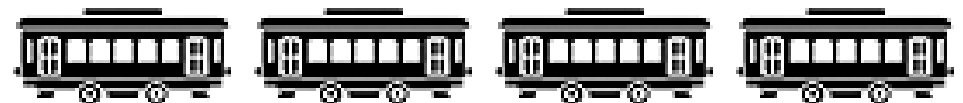
We are happy to work with you to access these benefits.

Sponsorship – If you have a particular passion or interest, there are many sponsorship opportunities. Sponsorships are available for particular programs, restoration efforts, exhibits or museum grounds.

Endowment – Through our partnership with the Community Foundation of Southern Wisconsin, you can participate in our Endowment Program. This allows you to give a general or directed donation that will sustain the Museum in perpetuity through interest earnings. Endowments offer unique recognition levels for you.

Legacy Giving – Through our partnership with the Community Foundation of Southern Wisconsin, you can participate in our Legacy Giving Program. This allows you to set aside a gift in your will that will be allocated to general or directed funds. Pre-planned bequests offer opportunities for unique and lasting recognition.

For more information about giving to the East Troy Railroad Museum, please contact us at fundcomm@easttroyrr.org or call us at 262-642-3263.



Volunteer of the Year — Pete Frorath

The East Troy Railroad Museum would not be possible without the dedication and commitment of its many volunteers.

Each year at our Annual Volunteer Appreciation Luncheon, one devoted volunteer is recognized with our "Volunteer of the Year" award. This recognition is given to the outstanding and inspiring volunteer who has taken a leadership role to preserve and enhance the museum while encouraging others to do the same.

The 2024 award went to Pete Frorath. Pete has been a volunteer for 10 years, doing everything from staffing trains to performing essential repairs. He is sometimes called "Basement Pete" since he repairs all of our car seats in the basement of our Volunteer Center. The seats you are sitting on retain their original look thanks to Pete's dedication to preserving history.

Pete is out every Saturday either as a Motorman or a Conductor. As a true railroad man, Pete is always on time. He is no stranger to transportation as he is a retired Greyhound bus driver and can tell you lots of stories about how schedules work.

Pete and his wife Jennifer live in West Allis. If you see Pete, congratulate him on being Volunteer of the Year.



2025 CAR ROSTER

No.	Railway Company/City	Type	Built (rebuilt)	Builder	Seats	Received	Restored
6	Chicago South Shore & South Bend Railroad	Steel Interurban	1926	Pullman Car Co.	54	2010	
9	Chicago South Shore & South Bend Railroad	Steel Interurban	1926	Pullman Car Co.	54	1990	1993, 2015
13	Chicago South Shore & South Bend Railroad	Steel Interurban	1926 (1940s)	Pullman Car Co.	80	1998	2015
17	Milwaukee Street Railway	Horse Car	1880s	Unknown		2003	
21	East Troy Electric Railroad	Single-truck Open Car	1975	ETER	45	1975	1985
23	Chicago South Shore & South Bend Railroad	Steel Interurban	1927	Pullman Car Co.	80	2010	
24	Chicago South Shore & South Bend Railroad * Restored as Diner No. 24 – The Beverly Shores	Steel Interurban Interurban Diner	1927 (1940s)	Pullman Car Co. ETER	80 50	1992 1992	1995* 1995
25	Chicago South Shore & South Bend Railroad * Restored as Diner No. 25 - The Ravenswood	Steel Interurban Interurban Diner	1927 (1940s)	Pullman Car Co. ETER	80 50	1983 1983	1991* 1991
26	Sheboygan Light Power & Railway	Wooden Interurban	1908	Cincinnati Car Co.	44	1988	2005
30	Chicago South Shore & South Bend Railroad	Steel Interurban	1929	Standard Steel Car Co.	48	1983	1986
33	Chicago South Shore & South Bend Railroad	Steel Interurban	1929	Pullman Car Co.	48	2010	2016
56	Mississippi Valley Public Service (LaCrosse City Railway)	Double Truck Streetcar	1916	St. Louis Car Co.	46	2022	
107	Chicago South Shore & South Bend Railroad	Combine	1927	Pullman Car Co.		2010	Est. 2027
162	Chicago North Shore & Milwaukee	Steel Interurban	1915	JG Brill Co.	56	2022	Est. 2027
228	Chicago North Shore & Milwaukee Railroad	Merchandise Car	1922	Cincinnati Car Co.	N/A	1988	2024
761	Chicago North Shore and Milwaukee Railroad	Steel Interurban	1930	Standard Steel Car Co.	52	2001	2021
846	Milwaukee Electric Railway & Light Co. Streetcar	Double-truck Streetcar	1920	St. Louis Car Co.	48	2002	1986
978	Milwaukee Electric Railway & Light Co. Streetcar	Double-truck Streetcar	1929	St. Louis Car Co.	48	2002	
1583	Twin City Rapid Transit Company	Double-truck Streetcar	1913 (1921)(1948)	TCRT	48	1981	1985
1738	Former Milwaukee Road now ETER	Terminal Caboose	1956			1985	1985
4420	Chicago Elevated (CTA)	Rapid Transit Car	1924	Cincinnati Car Co.	52	1982	1985
4439	Chicago Elevated (CTA)	Rapid Transit Car	1924	Cincinnati Car Co.	52	2020	2022
4453	Chicago Elevated (CTA)	Rapid Transit Car	1924	Cincinnati Car Co.	52	1995	1999
D23	The Milwaukee Electric Railway & Light Co.	Line Car	1907 (1929)	TMER&L	N/A	1989	1989, 2018
L6	The Milwaukee Electric Railway & Light Co.	Utility Crane Car	1911 (1929)	St. Louis Car Co.	N/A	1988	1989
L8	The Milwaukee Electric Railway & Light Co.	50-ton Steeplecab Loco.	1935	TMER&L	N/A	1989	1990
L9	The Milwaukee Electric Railway & Transport Co. Converted to East Troy Railroad Locomotive L9	50-ton Steeplecab Loco.	1944	TMER&T ETER	N/A	1988 1988	1990
13332	Soo Line (former Duluth South Shore & Atlantic)	Flat Car (Hobo Car)	1924	Pullman	N/A	1985	2002

East Troy Railroad 2025 Dinner Trains

KENTUCKY DERBY TRAIN

May 3

Pimento cheese spread with petite toasts, southern sweet potato and spinach salad, Kentucky hot brown sliders, shrimp and smoked grits

MOTHER'S DAY TRAIN

May 10

Burrata, arugula and compressed cantaloupe salad, grilled bearnaise salmon, chocolate éclair trifle

SPRING LUNCH

May 15

House salad, Chicken with Roasted Parmesan Cream, Herb Smashed Red Potatoes seasonal vegetables, dinner rolls and spice cake with cream cheese frosting

SURF & TURF

May 31

Wisconsin cheese board, filet topped with skewered garlic & lime shrimp, truffle oil potatoes, local farm fresh assorted sautéed vegetables, dinner rolls and Tiramisu cupcakes

FATHER'S DAY

June 14

Wisconsin cheeseboard, wedge salad, Bavarian pork chop braised with sauerkraut and pineapple bourbon chutney, mashed potatoes and sautéed seasonal vegetables, apple turnover

STARS AND STRIPES

July 12

Wisconsin cheese board, artisan salad, grilled filet, accompanied by twice-baked mashed potatoes and sautéed seasonal vegetables, Strawberry Cream Cheese Cupcake

SURF & TURF

July 26

Wisconsin cheeseboard, filet topped with skewered garlic & lime shrimp, truffle oil potatoes, local farm fresh assorted sautéed vegetables, dinner rolls and Tiramisu cupcakes

WINE & CHEESE

Aug. 9

A four-course wine and cheese tasting including: A Sparkling Ruffino Organic Prosecco, The Dreaming Tree Chardonnay, The Dreaming Tree Pinot Noir, and the Unshackled Cabernet Sauvignon. Each served with select cheeses.

SOUTHERN DELIGHT

Aug. 16

Southern shrimp dip with Alabama crackers, slaw salad, baby back pork ribs with bourbon BBQ sauce, creamy buttermilk mashed potatoes, summer kernelled confetti corn, jalapeno corn bread, peach cobbler cheesecake

BEER TASTING

Aug. 30

Heavy hors d'oeuvres while tasting a variety of beers brewed today, including Weissbier, lagers, ales, and steam beers. The tasting will be led by an expert from Black Point Estate.

FALL HARVEST

Sept. 13

Wisconsin cheese board, chopped kale salad, beef bourguignon, roasted garlic and chipotle smashed potatoes, roasted farm-fresh vegetables, dinner rolls and apple spice cake

AUTUMN GLOW

Sept. 20

Wisconsin cheese board, mixed green salad, whiskey glazed brisket, cheddar mashed potatoes, sautéed fall vegetable mélange, dinner rolls and apple cider crumb cake

FALL LUNCH

Sept. 25

House salad, Roasted Beef Tips with mushroom gravy, Garlic Smashers, seasonal vegetables, dinner rolls and chocolate cake with fresh fruit garnish.

OKTOBERFEST

Oct. 4

German beer cheese spread and pretzels, cucumber and radicchio salad, sauerbraten, German dill mashed potatoes, carrots & leeks, German chocolate cake

EPICUREAN EXPRESS

Oct. 11

Chef's charcuterie board, crispy prosciutto and grilled pear salad, classic shrimp Newburg brochette, filet mignon, dauphinoise potatoes, asparagus mélange, herb bundle garnish, triple chocolate brownie trifle

HARVEST COLORS

Oct. 15

House salad, Homemade Meatloaf, garlic smashers, seasonal vegetables, dinner rolls and Lemon Bars

SWEETEST DAY

Oct. 18

Wisconsin cheese board, autumn walnut salad, filet mignon with bourbon glaze, red skin mashers, roasted seasonal vegetables, soft rolls, and flourless chocolate cake

ADULT HALLOWEEN

Oct. 25

Caudron dip, spooky salad, cider marinated short ribs, smoked cheddar mashed potatoes, seasonal fall vegetables, sesame squash rolls, pumpkin spice latte cake



Fine dining on the East Troy Railroad

Since 1992, the East Troy Railroad Museum has been proud to offer elegant Dinner Train experiences to our guests from around the world.

Our Dinner Trains take passengers on a two-hour journey over our picturesque line. Salads and appetizers are presented on tables as our guests board the train. Soon a delicious entrée is delivered to the tables, to be enjoyed while beautiful scenery passes by the picture windows.

The Dinner Train travels past the Elegant Farmer stop and pauses along the shore of Lower Phantom Lake. Here, passengers hear a brief talk about the history of the line, the cars they are riding in and of course, the famous legend of Lower Phantom Lake! Sunsets across the lake are beautiful when viewed from this spot.

When you come, we hope you'll share your experience on social media. There should be a number of what we

used to call "Kodak Moments," both inside and outside the cars.

It is not uncommon to see swans on the lake along with other birds. After stopping by the lake, our train pulls across Highway ES and into Indianhead Park in Mukwonago. Here, guests are offered the chance to get off the train to stretch their legs, get some pictures and enjoy the park. After about 15 minutes, we re-board the train and head back to East Troy while enjoying dessert and coffee - or after dinner drinks. After all, we are in Wisconsin, so bar service is available!

A common question we have received in the past is; "Can we bring our young child on the Dinner Train?"

Our Dinner Trains are really designed for adults, but we have designed our Picnic Trains to be perfect for families with young children. See Page 4 to find out more about the Picnic Trains.

Reserve a spot

Prepaid reservations are required. While ticket sales officially close 5 days before the event, most trains sell out early. Tickets can be purchased at the railroad's website or by calling 262-642-3263.

Options for special dietary needs can be found on the main "Dinner Trains" page of our website.

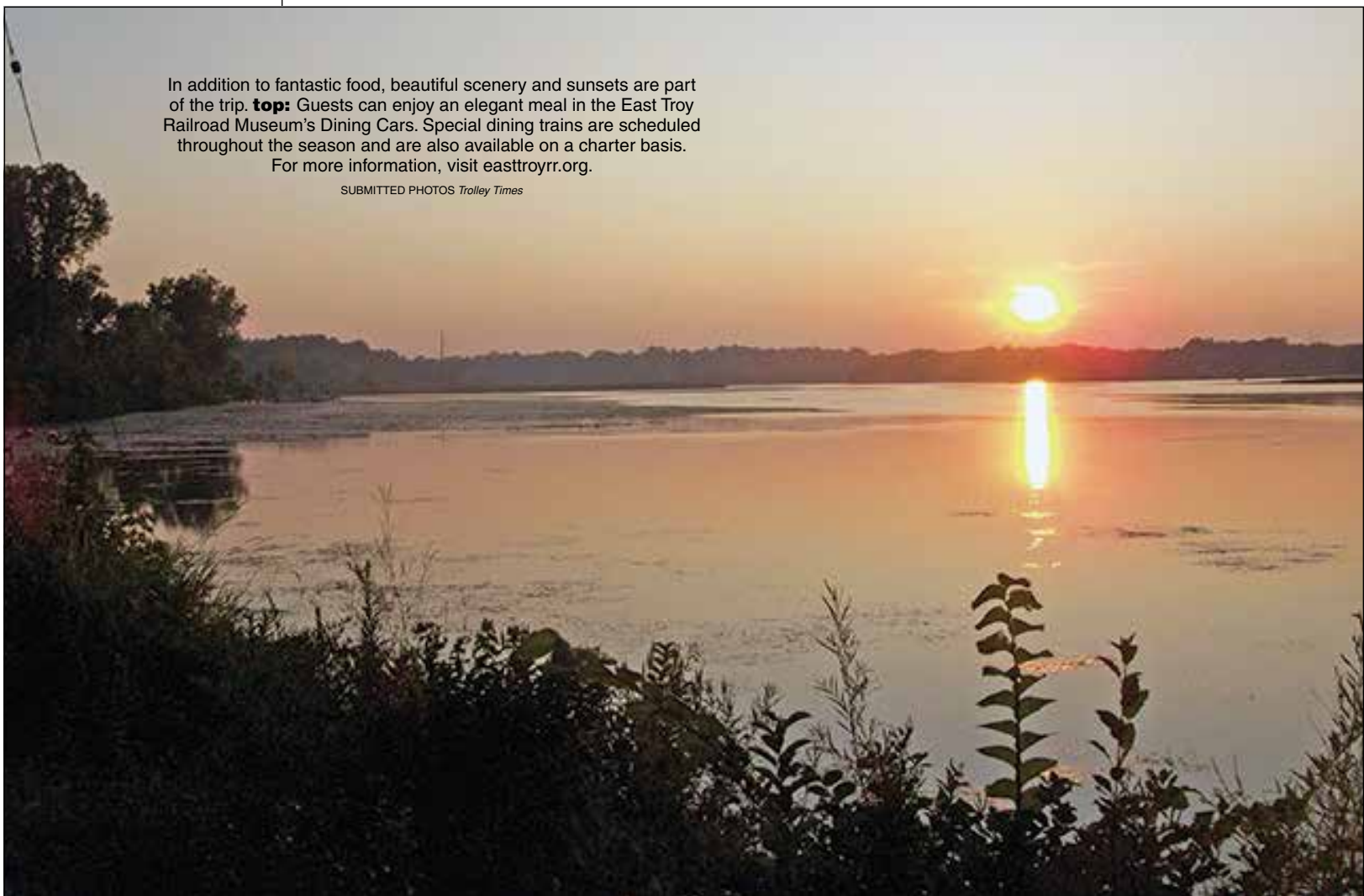
Dinner Train tickets include the meal and gratuity. Bar service is also available. Onboard restrooms are provided.

The dress code is business casual, and high heels are not recommended. Seating is limited and reservations are non-refundable. Visa, MasterCard and Discover are accepted.

For more information, please visit the "Dinner Trains" page of our website at easttroyrr.org/dinner-trains.

In addition to fantastic food, beautiful scenery and sunsets are part of the trip. **top:** Guests can enjoy an elegant meal in the East Troy Railroad Museum's Dining Cars. Special dining trains are scheduled throughout the season and are also available on a charter basis. For more information, visit easttroyrr.org.

SUBMITTED PHOTOS Trolley Times





BIG RED MAKES BIG MOVES EASY.

- Industrial Moving & Relocation
- Storage – Indoor/Outdoor
- Specialized Services



BIG OR SMALL WE MOVE IT ALL!

Proudly serving Wisconsin for over 40 years!

BIG RED MACHINERY MOVERS, INC.



3645 W. Elm St
Milwaukee, WI 53209
(414) 352-6520
www.bigredmovers.com



ALPINE VALLEY RESORT

- Golf Memberships
- Mountain Biking
- Disc Golf

Please call Alpine Valley Resort for more details or visit our website:

alpinevalleyresort.com



ALPINE VALLEY RESORT

The Fastest Way To Fun
Established in 1964

ALPINE VALLEY
RESORT

FIRST CITIZENS STATE BANK EAST TROY OFFICE

NEED
CASH?

Visit
our
drive-up

ATM

Just down the road on Main St.

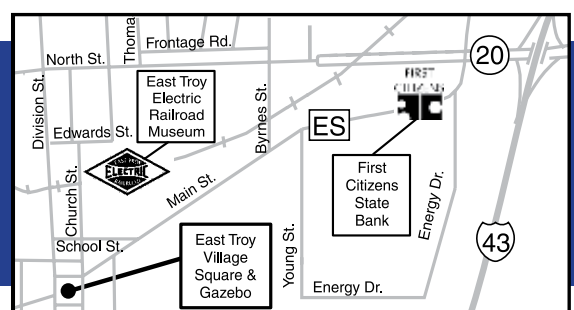
Genuine Customer Service

Sound Ratings

Stability You Can Rely On



2546 E. Main St.
P.O. Box 866
East Troy
262-642-2530
800-236-8766



www.firstcitizensww.com



OPEN: M-Th 9 a.m.-5 p.m. • Fri. 9 a.m.-5:30 p.m.
Sat. 9 a.m.-noon • Drive-up open 8 a.m. Mon.-Sat.



Trick-or-Treat Trains

By Jim Feyerherm
EAST TROY RAILROAD
Bring your kids or grandkids in costume to ride our "Trick-or-Treat" Trains. We will take a train from the Depot in East Troy to Byrnes Memorial Park, where kids can go "Trick-or-Treating," play games, and enjoy the playground equipment before our trip back to East Troy.
Upon returning to East Troy, each child can pick out the perfect pumpkin to take home!

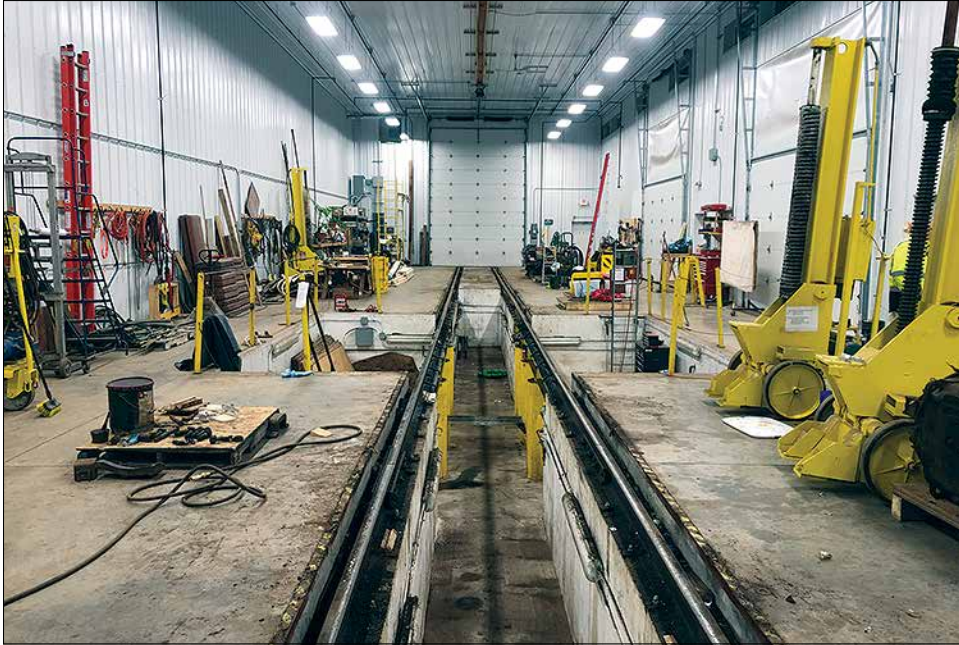
Trick-or-Treat Trains will run:
 • Friday October 3 5 p.m.
 • Friday October 10 5 p.m. and 6 p.m.
 • Friday October 17 5 p.m. and 6 p.m.
 • Friday October 24 5 p.m. and 6 p.m.
 Advance purchase tickets are required. Tickets can be purchased on our website at www.easttroyrr.org.



Maintenance Facility essential to operating our historic fleet

By Jim Feyerherm
EAST TROY RAILROAD
In 2016 the East Troy Electric Railroad opened our new maintenance facility. It features a spur that allows cars to be driven right into the building. Under the tracks inside is an inspection pit where maintenance can be easily performed on the important mechanical and safety components located on the bottom of each car.
Each car is brought to this facility for an annual inspection and repairs such as brake

shoe changes, brake adjustments, oiling, greasing, and cleaning take place. As most cars are over 100 years old, maintenance or repairs often involve rebuilding a worn part, searching the country for a rare replacement part, or creating a new part from scratch in our shop. Fortunately, we have dedicated areas for motor work, air compressor repairs, welding, and woodworking.
Look for our occasional "Behind the Scenes" tours to see this terrific facility.



Historical Depot and Stone Barn Roofs Replaced

By Jim Feyerherm
EAST TROY RAILROAD
Our East Troy Depot was the original power conversion building for the TMER&L, built in 1909. Over the last couple of years, thanks to grants and donations, we have finally replaced the

depot windows and installed an HVAC system. Previously, when volunteers were hard at work improving the exhibits inside the museum, things were looking good – as long as it wasn't raining.
Thanks to another special donation we were recently able to replace the

depot roof. Our skilled volunteers and an accommodating contractor combined efforts, and the price tag for the new roof turned out to be less than the original budget. The donor agreed we could use the savings toward a new roof for our Stone Barn facility which is used to store supplies and

equipment awaiting repairs. Another donor came forward to cover the rest of the cost and we now also have a new roof on this historic Wisconsin Stone Barn!
These buildings will serve us for years to come and you can now visit The East Troy Railroad Depot and Museum in comfort!



Our Depot

By Sue Budzien
EAST TROY RAILROAD
You will take a step back in time when you walk into our Depot and Museum. The original cream city bricks have stood the test of time since being built back in 1909. The Depot-Museum was not actually the Depot when it was first built. It was the substation that converted the power for the overhead trolley line and also the village of East Troy. The actual Depot is located one block to the west and now is currently a three-family rental.

The rotary converter that is located in the back of the Museum is the last of the four original converters that were located in this building. You will notice the three wooden boards on the floor which cover the pits where the converters were located. The rotary converter was decommissioned in 1985 when our new solid-state

substation was brought into service. It is located about halfway down our line at our Army Lake siding.

The Museum portion of the Depot contains hundreds of artifacts related to electric railroads. We have a large display of model trains along with many photographs for our guests to view.

The children will have a great time when visiting the Museum. They can ring the old bell located just outside our west entrance. We have our Jolly Trolley outside which makes for a great photo-op. Inside the Museum, they can pretend to be a motorman in our trolley cab, do a scavenger hunt around the Depot and locate some historic items.

Phillip Karnath, our resident ghost, is known to haunt the Depot from time-to-time. He's not a mean ghost, he just likes to play tricks on us. Usually his tricks let us know something



might happen so we can fix it before it becomes a real show stopper. Phil was an employee of the TMER&L back in 1912 when he was electrocuted in the back rotary room on April 24. Phil did not pass away in the depot but at Trinity Memorial Hospital

in Cudahy, Wisconsin on May 4th. He was 23 years old. He was laid to rest in the Oak Ridge Cemetery, along with the rest of his family. If you ride a train, look for the orange flag as you go by the cemetery.

The Depot is the gathering place for all of our trains

including our famous dinner trains. You get your tickets and have a refreshing drink and a light snack as you enjoy live music from our keyboardist, Gary K. Dinner train tickets are available on-line as they are reservations only.

The gift shop which is in

the other half of the Depot has hundreds of items for kids and adults of all ages. We carry a wide selection of t-shirts, hats, sweatshirts, mugs, glassware, books, and collectibles. We also have an old-time crank penny press machine for all you collectors.



AZURA MEMORY CARE



*"To All of the Wonderful People at Azura Memory Care,
We would like to thank each and every one of you for taking care of our Mom with such loving kindness and compassion. We were so blessed to have her live in such an amazing home!! We appreciate everything you all do!"*

Love, Mickelson Family

Let Azura Assist

with your loved one's short- or long-term memory care needs.

What sets Azura apart?

- High Caregiver to Resident Ratio
- Exclusive **MOSAIC Connections** Training; a required advanced dementia and engagement education system featuring the Virtual Dementia Tour
- Personalized Life Engagement Programming; featuring **MOSAIC Therapies** of Cognitive Stimulation, Participation, Exercise, Community and more!
- Medication Management
- Secured Entrance and Exits
- Incontinence Care
- Behavioral Expression Management
- Electric Charting System
- On-site Beautician, Dental Care, Podiatry, Physician*, Home Health Therapies and Hospice Care
- Unique **MOSAIC Dreams** Program!

COMING TO MUKWONAGO

800-842-9872

www.azuramemory.com

Call today to witness the Azura experience!



KOSKINEN EYE CLINIC, LLC

A MEMBER OF *VISION SOURCE*

WE BELIEVE LIFE IS ALL ABOUT YOUR VISION

**JERRY KOSKINEN, OPTOMETRIST
SANDRA HUENINK, OPTOMETRIST**

3278 W MAIN STREET, PO BOX 165
EAST TROY, WI 53120

T: 262-642-9719

F: 262-642-2228

www.visionsource-koskineneye.com

391038

RESLER & ASSOCIATES, LLC

Proud Supporter of East Troy!



**3238 Main Street
East Troy 53120**

(Piggly Wiggly Shopping Center)

(262) 642-3483

www.reslerandassociates.com

**AMERICAN FAMILY
INSURANCE**

Insure carefully, dream fearlessly.

390838



Meet the Fleet

We are proud of every car in our fleet. There is a mixture of smaller trolley cars and larger interurban cars. All of our cars are either 100 years old or close to it. The car Roster on page 6 shows our entire fleet.

Car 9

Built in 1926 by the Pullman Car & Manufacturing Company, Car 9 was designed for high speed service between Chicago and South Bend, Indiana.

Under the ownership of electric magnate Samuel Insull, the Chicago South Shore & South Bend Railroad became one of the fastest interurban railways in the country, with cars like Car 9 reaching speeds of 80 mph. After being retired in 1983, Car 9 was acquired by the East Troy Railroad Museum in 1988 and lovingly restored five years later.

Car 13

Car 13, another gem from the Chicago South Shore & South Bend Railroad, was also built in 1926 by the Pullman Car & Manufacturing Company.

This electric interurban car was designed for fast, frequent service between Chicago and South Bend, providing reliable and speedy travel for thousands of commuters and vacationers. In 1946, Car 13 underwent a significant transformation - it was cut in half and lengthened by 17.5 feet, increasing its capacity from 56 to 80 seats to accommodate the growing demand. Despite the rebuild, Car 13 retained its original charm and remained a workhorse until its retirement in 1983.

Today it continues to operate here, where it's the largest capacity car in our fleet and often is coupled to Car 9 during special events. After over a million miles of reliable service, Car 13 still delivers a remarkable journey through history.

Today, you can see Cars 9 and 13 in action during our popular seasonal events like Bunny Trains, Christmas Trains, and Harvest Fest, offering a ride through history, only not at 80 mph!



ETRM's Own Webcam

Want to see what is happening at the East Troy Railroad right now?

Check out our Webcam! You can reach our Webcam through the East Troy Railroad channel on YouTube or through our website www.easttroyrr.org.



Grade school educational program available

By Jim Feyerherm
EAST TROY RAILROAD

The ETRM offers a program to educate children about the electric railroad and how it all works. Teaching STEM (Science, Technology, Engineering, and Mathematics) concepts, the program delivers education wrapped in the fun of an outing to the railroad. The program is available to schools, civic groups or any group wanting to educate their young ones.

We have gifted teachers, engineers, and volunteers who are passionate about helping children experience this fun and educational program. The program consists of learning about the different forms of energy and the children use kits to build and operate electric powered vehicles.

After the class they then get to see and feel how it all comes together by taking a train ride.

The program has two levels, one for Kindergarten through Second Grade, and

one for Third through Fifth Grade. The curriculum was developed by educators in accordance with State of Wisconsin standards.

The program is presented at the museum Depot in East Troy and involves:

- A short talk on electricity and motion.
- A grade-appropriate hands-on activity.
- A 30-minute ride on one of our vintage trolleys to Indianhead Park, with a talk about the history of the trolley

line as they ride.

- Lunch at the park (30-40 min). Students bring their own lunch.

- A 30-minute ride back to the East Troy Depot, focusing on the trolley car and how it works.

- An optional history-based scavenger hunt at the Depot and a history discussion can be included.

For more information visit the railroad's website at www.easttroyrr.org or call 262-642-3263.



Welcome to

East Troy!

By Vanessa Lenz

EAST TROY CHAMBER EXECUTIVE DIRECTOR

The East Troy Area Chamber of Commerce welcomes you to East Troy. We are so glad that you're here. We know you'll enjoy your visit to the East Troy Electric Railroad, Wisconsin's last original electric railroad line.

After your ride, we hope you'll get out and about to discover all of the great places to go and things to do in the area.

In the past decade, we've witnessed East Troy transform into one of the coolest places in southeastern Wisconsin.

You'll feel it when you walk along the streets of our downtown historic Village Square, with a history that is well-preserved and now ripe with a little bit of everything: a mean brewing scene, diverse event line up and a foodie haven that put cities five times its size to shame (think Neapolitan woodfire pizzeria, farm-to-fork café and award-winning BBQ all within walking distance).

East Troy is also home to the most desirable attractions around, including the famous Alpine Valley Music Theatre, Alpine Valley Resort (voted No. 1 family resort), SkyDive Milwaukee (at East Troy Airport) and more.

If you're more of a nature lover, East Troy will capture your heart with its striking waterfronts and flourishing green space. Ten local lakes and three state natural areas are all located within two miles of downtown.

This list features tips on how to make the most of your trip: what to see, what to do and insider secrets.

For to-the-minute updates, check out easttroy.org.

Feel free to email any questions to: vanessa@easttroy.org.

MUST-SEE AND DO EAST TROY

Snap a photo at East Troy Village Square Park

If you've ever wanted to feel the proverbial heartbeat of East Troy, check out our most notable landmark, East Troy Village Square Park, which has a long history as the backdrop for community events like East Troy Lights, Brewfest and East Troy's Memorial Day Weekend Corn and Brat Roast.

The bandstand in the park's center provides the perfect selfie opportunity and between the people buzzing in and out of the surrounding businesses and cars making their way around the heart of East Troy, there's rarely a dull moment.

And if there isn't a crowd, you can always sit back and relax near the picturesque bandstand in the park's center that is an integral part of the village.

Raise your glass at East Troy Brewery

A must-stop for foodies and beer lovers alike, East Troy's first brewery touts house-made beers, along with a locally sourced menu with tasty options for the whole family.



There's so much magic in East Troy to explore, discover or rediscover – from oh-so-many enticing things to eat to buzzed-about attractions to hidden gems. Find out a full schedule at easttroy.org. **above:** East Troy's 10th annual Brewfest will be held on Sunday, May 25 at East Troy Village Square Park, 2881 Main St., featuring samples of over 65 craft beers, ciders, meads, and more from area breweries, including East Troy favorites East Troy Brewery and The Hive Taproom.

SARAH MANKE Trolley Times

From its small batch, locally-made Hill Valley Dairy cheese curds to its Friday Fish Fry to its White Truffle Pear Pizza, East Troy Brewery uses fresh ingredients to make everything from scratch, each day.

The locally-owned brewery, which opened in a remodeled historic bank building dating back to 1892, features exclusive taps, an outdoor patio, fireplace lounge, open kitchen, indoor seating and Taproom on the southwest corner of the East Troy Village Square, 2905 Main St.

For more information, visit etbrew.com.

Connect with local history

The East Troy Area Historical Society's Kubicki Museum and Heritage Center, 2106 Church St., on the village square provides a showcase of local history, including changing exhibits, artifacts, books, maps, documents, photographs and other materials.

To make an appointment, call 262-642-2642 or visit easttroyhistory.org.

Grab the perfect cup

East Troy's café 2894 On Main, located on the northwest corner of the East Troy Village Square, was designed to be an easily accessible community hub, featuring Tesla charging stations, community chalk message boards and an outdoor patio.

The beautifully renovated historic site

from 1856 features a farm-to-fork menu and uses locally roasted beans with local, organic milk.

For more information, visit 2894onMain.com.

Get sauced on the square

With locally sourced, seasonally inspired pizzas, Sauced is a definite must-try when visiting the East Troy Village Square.

At the 100 percent wood-fired Neapolitan style pizzeria, you'll find favorites like a Margherita with fresh mozzarella, the crowd-pleasing Prosciutto Verde and Carne, as well as a variety of house-made, organic gelato.

The fan favorite restaurant is located at 2886 Main St. and features an awesome beer selection and outdoor seating.

Visit getsauced.pizza for more information.

Visit Wisconsin's oldest operating inn and tavern

Refresh at East Troy House Historic Inn and Tavern, 2093 Division St. The oldest running inn and tavern in Wisconsin has been operating on the East Troy Village Square since 1842.

Its menu features its famous Friday Fish Fry, soups, specialty salads, sandwiches, seafood, pasta, steaks and more.

For more information, call 262-642-7100.

Fill up on award-winning BBQ

Take your pick of pulled pork, sliced brisket, pulled chicken, ribs or smoked sausages at LD's BBQ, located at 2511 Main St., East Troy.

The award-winning eatery is inspired by roadside stands and mobile trailers popular in states like South Carolina and New Mexico.

For more information, visit ldsbbq.com.

Drink mead, save bees

The Hive Taproom, W2463 County Road ES, is Wisconsin's only taproom serving their own session mead, brewed on site and made with their own honey.

Different from traditional mead, The Hive's 14 taps of session mead are brewed like a beer, are naturally gluten-free and finish like a beer/cider: dry, carbonated and served cold.

With a focus on locally-sourced ingredients from raw, local honey to Wisconsin hops to Door County cherries, the Hive's session mead is a true taste of Wisconsin.

Stop in or visit the Hive's website for a calendar of weekly trivia, live music, plus other special events throughout the year.

For more information, visit thehivetaproom.com.

Try the best apple pie in America

Nothing beats a slice of apple pie and The Elegant Farmer, 1545 Main St. Mukwonago, has been known for its signature Apple Pie Baked in a Paper Bag for decades, baking over a quarter of a million pies each year.

The Elegant Farmer's trademarked treat has been called "the best pie in America" by top publications "Gourmet Magazine," "The Wall Street Journal," "Food Network" and "Milwaukee Magazine."

The attraction also serves up homemade, fresh-picked and delicious offerings in its Farm Kitchen Bakery, Deli & Market.

For more information, visit elegantfarmer.com.

Eat Pizza on the Farm

Grassway Organics, W2716 Friemoth Road, in East Troy, hosts Pizza on the Farm events on Friday and Saturday nights, May through September, baking pizzas using only organic ingredients on the farm's on-site wood fired pizza oven.

Pizza is served rain or shine from 4 to 8 p.m. on Fridays and 2 to 8 p.m. on Saturdays. Live music starts at 4 p.m. For more information, visit grasswayorganics.com.

WHERE TO SHOP

Home on the Square

homeonthesquare.shop
2888 Main St. • East Troy
262-642-5400

Family owned and operated, Home on the Square aims to deliver a unique blend of high quality domestic and international products specifically geared toward a Midwestern client.

InkLink Books

inklinkbooks.com
2890 Main St. • East Troy
262-642-9607

InkLink Books, known for hosting bestselling authors at its Read & Feed book dinners and virtual events, captures the nostalgia of the best independent bookstores by filling its shelves with books from hyper-curated lists.

The Global Glass

theglobalglass.com
2884 Main St. • East Troy
262-684-5420

A full-service shop featuring beer, wine, spirits and expert picks on a great bottle of wine, the latest craft beer or something new for your bar.

Square Roots/ 2894 on Main

2894onmain.com
2894 Main St. • East Troy
262-642-9600

Located inside the café, 2894 on Main, Square Roots has created a local hub for community-produced goods, featuring a unique selection of groceries and gifts.

Square Side Boutique

2874 Main St. • East Troy
262-215-3736

Square Side Boutique specializes in women and children's fashion.

The shop recently unveiled a complete renovation with a new contemporary look and layout with open sightlines and lounge areas.

The Carpenter's Daughter

2893 Main St., Unit A • East Troy
262-745-6788

This faith-based brick and mortar features home, gifts, apparel and seasonal items as well as custom crafts and monthly wine and craft night for ladies. Everything is faith based and inventory is updated frequently.

Wilted Rose Resale & Gifts

wiltedrosecustoms.com
2931 Union St. • East Troy
262-441-4112

Wilted Rose, a resale and gift shop that aims to provide goods for everyone on your shopping list, features 52 vendors on two levels. Open from 9 a.m. to 4 p.m.

For a list of in-store vendors and upcoming events, visit Wiltedrosecustoms.com.

Zinn's on the Square

2087 Division St. • East Troy
262-441-0280

Zinn's features a distinctive and unconventional home and lifestyle marketplace.

The shop puts the focus on area makers and local small handmade businesses with products from around 30 local artisans.



above: Amelia and Delaney Tribble savor the sweet taste of summer's first sweet corn at the East Troy Area Chamber of Commerce's Memorial Day weekend Corn and Brat Roast.

VANESSA LENZ *Trolley Times*



at left: Your holidays aren't complete without a visit to East Troy Lights – an interactive holiday light display on the East Troy Village Square, which kicks off when Santa comes to town on Saturday, Dec. 6. East Troy Lights will feature timed shows on the hour at 7 p.m. Dec. 6-31 with the option to play songs on demand. Watch the Lights come to life with a special immersive East Troy Lights Live show on Fridays & Saturdays in December at 7 p.m.

SWITCHBACK CINEMA *Trolley Times*

FOOD & ESSENTIALS

East Troy Pharmacy

yourpharmacyet.com
3284 Main St. • East Troy
262-642-3510

Hansen's IGA

easttroy.hansensiga.com
3238 W. Main St. • East Troy
262-642-5524

Grassway Organics

grasswayorganics.com
W2716 Friemoth Rd. • East Troy
920-894-4201

Hometown Sausage Kitchen

hometownsausagekitchen.com
W1184 County Road L • East Troy
262-642-3264

Martin's Hardware-Rental & Pet

martinshardwarepet.com
3288 Main St. • East Troy
262-642-3344

West 20 Ranch & Saddle Co.

shop.west20.com
W4812 Highway 20 • East Troy
262-642-4272

right: East Troy's First Fridays transforms the heart of downtown into an exciting fusion of all the community has to offer – a one-of-a-kind, free, outdoor event featuring live music, various food, market and artisan vendors and activities for all ages. The series returns on the First Friday of the month, from 5 to 8 p.m., May 2, June 6, Aug. 1 and Sept. 5 at East Troy Village Square Park.

SARAH MANKE *Trolley Times*



East Troy

WISCONSIN 2025

EAST TROY FIRST FRIDAYS

5 - 8 p.m. every first Friday May - September
(May 2, June 6, Aug. 1 and Sept. 5)

MEMORIAL DAY WEEKEND

Memorial Day Corn & Brat Roast: May 23-26
Community-wide Rummage Sale: May 23-26
East Troy Brewfest: May 25
Memorial Day Observance: May 26

FOURTH OF JULY CELEBRATION

East Troy Music Festival Presented By East Troy Lions July 3, 4, 5, and 6

SPOOKTACULAR SCAVENGER GAMES

Saturday, Oct. 18, 5:30 - 8:30 p.m.

HARVEST WINE WALK

Saturday, October 11

EAST TROY'S PUMPKIN POP UP

Oct. 24-31

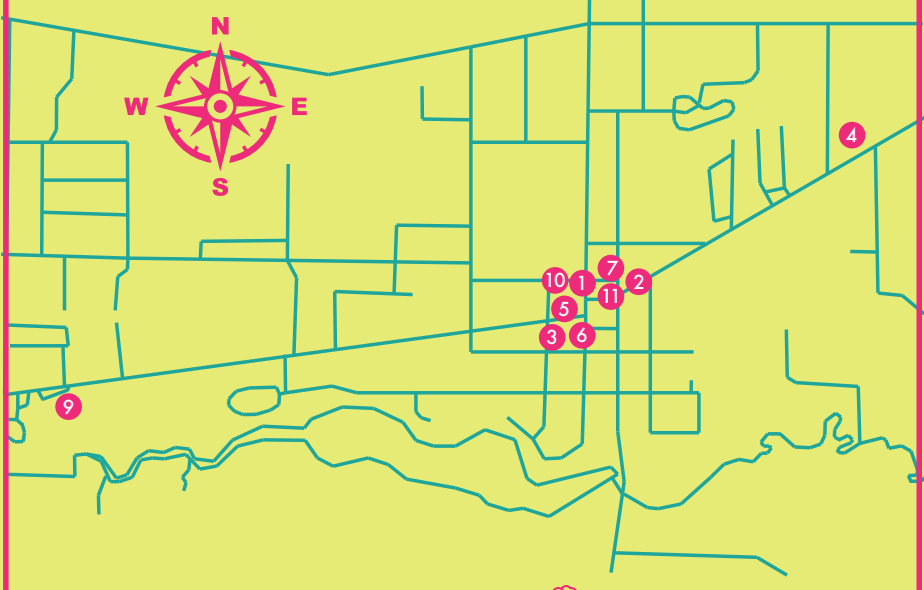
EAST TROY LIGHTS

Santa on the Square & Santa Parade Train: Dec. 6
East Troy Winter Wine Walk: Dec. 12
East Troy Lights Live!: Dec. 12, 13, 19, 20, 26, 27
The Candy Cane Adventure: Dec. 8-31
East Troy Community Night & Santa Tours: Dec. 20
East Troy NYE Ball Drop, presented by Allan ICS: Dec. 31



East Troy

SIP HAPPY



- | | |
|--------------------------|---|
| 1 🍷 2894 on Main | 6 🍺 East Troy Brewery |
| 2 🍷 Al Smith's Saloon | 7 🍷 The Global Glass |
| 3 🍷 Alpine Valley Resort | 8 🍷 Grassway Organics - Pizza on the Farm |
| 4 🍷 The Social Affair | 9 🍷 The Hive Taproom |
| 5 🍷 Dos Amigos | 10 🍷 Sammy's Place |
| 6 🍷 East Troy House | 11 🍷 Sauced Pizzeria |

 easttroy.org



martens
PLUMBING & HEATING INC

65+ years of experience
in your neighborhood!

VISIT OUR
NEWLY REMODELED
SHOWROOM WITH OVER
50 WORKING FIXTURES

**COMPLETE
BATHROOM REMODELING**

117 MacArthur Drive, Mukwonago, WI
262-363-7146
www.martensplumbing.com • MP # 134384

468007

BURTNESS

Chevrolet
**BUICK
GMC**

1389 West Main Street
Whitewater, WI 53190



For the
Best
Deals
in
Walworth
County
Driveburtness.com



Jeep 

RAM

CHRYSLER

DODGE

1421 West Main Street
Whitewater, WI 53190



WHEN THE PRODUCTS ARE SIMILAR IT'S THE DEALER THAT MAKES THE DIFFERENCE

262-473-2522 • 262-473-3072 • www.driveburtness.com

468313



You can leave your car at the East Troy Railroad Depot as everything on the East Troy Village Square is easy to reach and in walking distance with stops at every corner, including Sauced Pizzeria, featuring locally sourced, seasonally inspired, 100% wood fired pizzas.

JAMIE ROHRER Trolley Times

LIKE A GOOD NEIGHBOR, STATE FARM IS THERE.®



Tim Werwie, Agent
STATE FARM AGENT

2104 Church Street
East Troy, WI 53120
Bus: 262-642-2038

 **State Farm™**

413127



COMPLETE AUTO BODY REPAIR
QUALITY • INTEGRITY • SERVICE

Open Monday-Friday 6:30 a.m.-5:30 p.m.
Saturday by appointment

FREE ESTIMATES

1006 Main Street, Mukwonago • (262) 363-8555

Preferred by Major Insurance Companies

468375

Pre-arrangement and cremation services also available



Legacy
Funeral Services

642-5057

2974 Main Street, East Troy WI
legacyfuneralservices@gmail.com
www.legacyfuneralservices.com

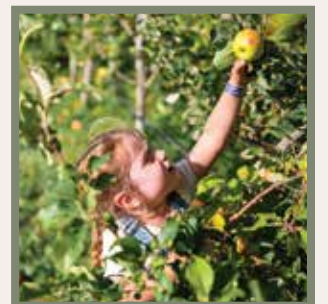
391048

The Elegant Farmer[®]

FARM KITCHEN BAKERY, DELI & MARKET[™]



HARVEST FEST



September 6th - October 26th, Saturdays & Sundays

Apple picking • Corn maze • Train • Smilin' Barn Cafe • Hayrides • Pumpkin patch • Ponyrides



SIMPLY THE BEST

Our market is open year round!

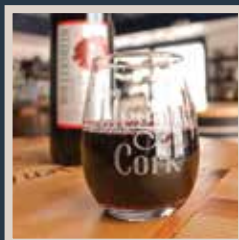
262.363.6770 - elegantfarmer.com

9am to 6pm - 1545 Main St, Mukwonago

The Elegant Cork[™]

WINE SHOP

We invite you on a journey across Wisconsin with locally sourced wines and ciders. Come in for a custom wine tasting or host your special event with us for a memorable affair!



Located right next to The Elegant Farmer!
262.378.3278 - theelegantcork.com