

THE SPIRIT *of The Lakes*

vol. 9 no. 1

MARCH/APRIL 2024

complimentary copy



MAKING LIFE

Sweeter!

ANDERSON'S CANDY

MCHENRY
GARDEN CLUB

AMB ROOFING



262-949-3618



Jerry Kroupa, REALTOR®

JERRY KROUPA

View my properties at www.lakehomeswi.net

OFFICE AT 102 N. WISCONSIN ST., ELKHORN



@properties

CHRISTIE'S INTERNATIONAL REAL ESTATE



W5369 Baywood Dr, Elkhorn - You won't find another lake home like this lakefront. Surrounded by lake views. You won't want to miss 4th of July at the lake - you have the best seats in the house at this lakefront! Situated on 103' of level frontage on 0.81 of an acre. Offering an updated, move in ready, 4BR, 3BA, (sleeps 19) two story home that has all the upper end finishes on your check list. Main floor offers gracious foyer with laundry closet as you walk into the kitchen with vaulted ceiling, granite tops and SS appliances and wine bar with fridge. Enjoy meals in dining area offering extended lake views. You'll find a family room with vaulted ceilings and a wall of windows that welcomes the lake inside. Living area off dining with fireplace and sliders to brick patio. Also, main floor primary with shared full bath. Upstairs offers 3BR and 2 full baths. Ample space for large gatherings. Huge level lakeside yard which leads to 3 piers. **\$2,199,700**



W5361 Lost Nation, Elkhorn - You're welcomed to the lake as you walk in with extended southern views of Mill Lake with 50' of frontage. Updated 3 BR, 3.5 BA makes this an ideal lake retreat. Open concept main floor featuring LR, Sunroom. Full bath and kitchen with quartz tops, SS appliances, breakfast bar and coffee bar with wine fridge, grilling deck, dining area & wood floors throughout. Upstairs features two lakeside bedrooms, one with powder room, full bath and game area. Lower level walk-out with lakeside bedroom and full shared bath, laundry and small rec area with slider to lakeside deck that leads to firepit and pier. 1.5 detached garage across the street with wooded area behind. Dive off the pier into some of the best swimming on the lake. Turn-key furniture package included and quick closing. **\$1,549,700**



N7626 Pleasant Point Circle, Elkhorn - 50' of level Mill Lake sand frontage with extended lake views compliments this 3BR, 2BA ranch with walk-out to covered cement patio. Inside you're welcomed by the lake as you walk into the foyer/kitchen, large living room with two sliders. Natural sunlight fills the room. Bedroom, office area and full bath complete the main level. Lower-level family room with brick fireplace and sliding glass door that leads you to the cement patio and level lakefront yard and pier. On LL you'll find two bedrooms, 2nd kitchen, full bath and laundry room. Come make this home yours and create lasting memories. Easy access off Hwy 12/67, short walk to Lauderdale Golf Course and minutes to Kettle Moraine Trail system. The ability for a quick close! **\$1,099,000**



W4910 Oakwood Dr, Elkhorn - Rare opportunity to own a private 1.5 acres with 99' of frontage on Pleasant Lake. You'll enjoy the main level with vaulted ceilings and hickory flooring. Living room has a stone fireplace, galley Kitch that leads to lakeside dining room with slider to deck, offering outstanding lake views. Also included on the main, there's a large Primary BR, 2nd BR and full bath. Lower-level Family room walk-out to cement patio. Family room features wood fireplace, 3rd BR, full bath, laundry room & storage. Slight slope leads you to the L shape pier. Backside of the lot is level and open. Short drive to Kettle Moraine Trail head offering Mountain Biking, Hiking and Cross Country Skiing. Minutes to a boat launch on Lauderdale Lakes. Quiet Pleasant Lake road is great for long walks. Come take a look! **\$749,900**



42 N West St, Elkhorn - Updated zero lot line 3 BD, 1.5 bath on the West side of Elkhorn with semiprivate location overlooking a wet-land with abundance of wildlife. Features of this two story include kitchen with island/breakfast bar, pantry, quartz counter tops and stainless steel appliances that is open to the living room with gas fireplace and sliding glass door that leads to cement patio. You'll also find a powder room on the main level. Upstairs offer primary BD with double closet, 2nd and 3rd Bd plus a full bath. Full basement with ample storage and laundry hook up. Top it off with oversize two car garage makes this an exceptional value. **\$289,900**



38 N West St, Elkhorn - Zero lot line 3 Bedroom, 1.5 bath, two story on the west side of town, located in a semi-private location with a backyard that abuts to a wet land that offers all kinds of wildlife viewing. Inside on the main level you'll find an eat-in kitchen with dinette that opens to living room with gas fireplace and sliding glass that leads to cement patio and a powder room completes the main level. Upstairs offer a primary with double closet, 2nd and 3rd bedrooms plus full bath. Abundant storage in the full basement plus laundry area. Oversize two car garage completes this outstanding value. **\$239,900**

Experience the Natural Beauty of Abbey Springs

Abbey Springs is a perfect venue for your golf outing, wedding and special events of all sizes.

Beautifully set on the rolling slopes of Geneva Lake's south shore.



www.abbeysprings.org

262.275.6113



20 YEARS OF *Blaaming*

McHenry Garden Club beautifies and supports the community

by **Sandra Landen Machaj**
CORRESPONDENT

The McHenry Garden Club has been an active part of the community for 20 years, but it was just a dream until a group of people interested gathered to consider forming a club.

When Marita Sension and her husband moved to McHenry in 2001, she had no idea that she would be one of those responsible for starting a garden club in McHenry, let alone one that would grow and prosper over the next 20 years and expand from a few original members to more than 40.

Sension said shortly after moving here, she and her family went to Woodstock to view the decorated Christmas Trees in the square. The trees had each been decorated by different clubs in the area.

While speaking with the representative from the Woodstock Garden Club,

Sension was invited to their next meeting. She went – and joined the club – but began thinking about the need for a Garden Club in McHenry.

She wondered why McHenry didn't have a garden club, after all, there were lots of gardens in the area.

She was also surprised to learn that Crystal Lake had four garden clubs so she began to actively pursue starting one in her own community. With help from the Crystal Lake and Woodstock clubs, she reached out to the Garden Clubs of Illinois, which sent her some "How to" information.

By 2004, Sension was ready to put her plan for starting a McHenry Garden Club into action. She began this fledgling attempt by arranging the use of the meeting room on the lower level of the McHenry Savings Bank and wrote a piece for the local newspaper, inviting people to come to a meeting on the third Thursday of January 2004 for a discussion about forming a garden club.

To her surprise and delight 12 people showed up and the club was formed. That night when the McHenry Garden Club was

THE SPIRIT

IS A PUBLICATION OF

SOUTHERN LAKES
Newspapers LLC

GENERAL MANAGER

Sue Z. Lange

EDITOR IN CHIEF

Heather Ruenz

ADVERTISING DIRECTOR

Vicki Vanderwerff

CREATIVE DIRECTOR

Heidi Schulz

SECTION DESIGNER

Jennifer DeGroot

SALES

Pete Hansen

Tamera Hamilton

DISTRIBUTION MANAGER

Lindy Sweet

The Spirit of The Lakes is a complimentary publication, distributed throughout the Chain O' Lakes and Kenosha County area. Keeping up with the same great tradition as the Spirit of Geneva Lakes.

Send all correspondence to:

THE SPIRIT

**SOUTHERN LAKES
NEWSPAPERS**

1102 Ann Street
Delavan, WI 53115



SpiritofGenevaLakes.com

262.728.3411

Displaying Sunshine Flowers are members Priscilla Rutter, Debbie Hoffman, Traudl Koberlein and Pat Leucht who had spent the day creating the arrangements for hospice patients.

COURTESY MCHENRY GARDEN CLUB *Spirit of the Lakes*

created, Sensen was elected president and Barb Patterson was elected vice president in charge of programs. Patterson would go on to become the second president of the club.

Slow, steady growth

“In the first four years, we grew in numbers and activities, developed bylaws, a website and a Facebook page, and endeavored to see how we could help McHenry be more beautiful,” shared Sensen.

The group slowly began inviting other like-minded people to join. Their meetings were held monthly and were a combination of a social event as well as a learning opportunity that often featured a guest speaker. The guests were often Master Gardeners who shared their knowledge of gardening, or a craft such as creating a pot or planting a dish garden. Some of the activities were held at members’ homes, with the homeowner hosting the group.

Sensen said the meetings were enjoyable events, with members and visitors leaving with new knowledge about growing beautiful plants and flowers. Those present were also enjoying the friendships among the members of the club, friendships that have continued to grow over the years.

One of the early concerns was how to find ways to raise money for the club’s beautification projects and scholarships, but they discovered that their early efforts only yielded meager amounts.

Thanks to members Jean Schiller and Lora Godak, an event that would be successful in providing the funds needed to reach the club’s goals was pursued.

After attending a garden show in Richmond, Schiller and Godak suggested the McHenry Garden Club put on a show, too, but it was not met with much enthusiasm by the members. But they persisted and the club’s first flower show was held at McHenry High School in 2007. It was successful and profitable for the club and not only did it become an annual event but expanded to two shows each year.

Putting on a show

“The flower show attracts about 300 people for each event,” according to Wanda Comein, current president of the McHenry Garden Club.

The shows are a tremendous amount of work and require the help of the entire club membership for it to be successful.

The show itself includes participation from several, usually four to five, local florists who make beautiful flower arrangements. The arrangements are created on stage for the audience to observe and a commentator, who is also a floral designer, describes the plants and flowers in the arrangements. At the last show, Jennifer Hunt from Jh Events and Flowers served as commentator.

Then, to the delight of the crowd, each



above: Many members of the Garden Club spend a great deal of time creating beautiful gardens in their own yards. **top:** The garden of the month for the garden for July 2023 featured a variety of flowers. The sign honoring the owner is posted near the garden for the entire month.

COURTESY MCHENRY GARDEN CLUB *Spirit of the Lakes*

arrangement is raffled off to someone in the audience. There’s no additional charge to be in the raffle as the admission ticket is also the ticket for the raffle. Approximately 50 arrangements are presented during a show and are taken home by the lucky winners.

Another fun aspect to the show is the beautiful baskets created by club members and filled with unique items of which many, but not all, are related to gardening. The raffle baskets are another means of raising funds to continue the garden club’s work.

For many years, Traudl Koberlein and

Pat Schafer along with a committee of other volunteers, have designed and created these exciting baskets to be raffled off as prizes. And as a bonus, they add to the money raised at the flower shows.

While at the show, guests can enjoy coffee, tea or hot chocolate, along with some homemade baked goods available for sale.

Part of the community

The McHenry Garden Club is involved in – and supportive of – the local

community in several ways.

“One of our events that continues to be held and enjoyed is our Garden of the Month designation,” Comein said.

“A committee of several club members visit gardens in the community and after speaking with the homeowner, will choose two to three gardens and meet privately to choose which of these is to be made garden of the month,” she said.

The winner is given a \$25 gift certificate, and a sign is placed in their yard for the month. A garden is chosen each month throughout the summer, according to Comein.

Another group of members regularly spends time at Koberlein’s home putting together small bouquets of flowers that are taken to senior homes, the hospital, and hospice patients.

These Sunshine Deliveries are created from donated arrangements. The flowers are re-purposed into smaller bouquets of sunshine for those who may not be at their best health wise. The goal is to bring a smile to the recipient’s faces and some sunshine into their lives.

Over the years, McHenry Garden Club members have created some beautiful plantings to add to the beauty of the city. Some of those plantings are at the request of the city or the Chamber of Commerce.

Among the many projects done were plantings on Green Street, beautifying the Post Office parking lot and planting flowers at the Riverwalk shops, all of which were done by garden club volunteers.

During the Christmas holiday season, club members participated in the Festival of Trees held at the recreation center.

“We encouraged visitors to leave non-perishable food under the tree to be donated to the food pantry,” Comein said. “Last summer, for the first time, we had a float in the Fiesta Days Parade.”

The club has sponsored numerous library programs over the years, which have included teaching children to plant flowers. Additionally, they support the McHenry High School Garden Club.

The biggest outlay of money from the club is the awarding of college scholarships to students residing in McHenry who are pursuing the study of agriculture or any type of soil-based studies.

Staying active

Currently, club members are preparing for the Spring Container Gala, which will be held Tuesday, April 23, at McHenry High School – West Campus, 4724 W. Crystal Lake Rd., McHenry.

Florist participants already on board for the upcoming Gala include Harms Farm & Garden Center, Lockers Flowers Greenhouses and Gifts – both of McHenry, and Soil & Spade, out of Crystal Lake. Once again, these creative designers, who might be joined by others yet to sign on for the event, will provide a variety of garden



above: The stage is full of fresh flowers that the floral designers draw from to create their unique designs during McHenry Garden Club flower shows. **top:** Designers from Countryside Florists create arrangements to be given to a lucky audience member.

COURTESY MCHENRY GARDEN CLUB *Spirit of the Lakes*

containers to beautify a yard or the inside of a home.

The basket committee is already working hard to create raffle prize baskets to be enjoyed by the winners. And while it’s a bit too early for the bakers to be creating their freshly baked goods that will be offered

for sale, those planning to attend can be assured the sweet treats will not disappoint at the event.

Advance tickets to the Spring Container Gala can be purchased for \$12 per person or at the door for \$15. The doors open at 6:15 p.m. and the show starts at 7 p.m.

ARONSON AFENCE^{CO., INC.}

SERVING NORTHERN ILLINOIS AND SOUTHERN WISCONSIN



▪ Wood ▪ Aluminum ▪ Polyvinyl ▪ Cedar ▪ Chainlink ▪ Custom



**CONTACT US AND REQUEST
A FREE ESTIMATE**

(262) 248-3390

FINANCING AVAILABLE

Check Out Our Website
Gallery at aronsonfence.com
info@aronsonfence.net

▪ **Over 25 Years In Business** ▪



Those interested in joining the McHenry Garden Club, are welcome to attend a meeting so they can meet club members and learn more about the programs the club offers and supports.

Regular club meetings are held the third Wednesday of the month at 6:30 p.m., at Shepherd of the Hills Lutheran Church, 404 N. Green St., McHenry. Some meetings, however, are at members' homes or involve trips taken by club members so please check the calendar on the website for details.

To learn more about the club, purchase tickets to the Spring Container Gala, or inquire about attending a meeting, contact club president Wanda Comein, at 708-205-8428, membership chairman Pat Dicker at 815-382-2611 or send an email to mchenrygardenclub@gmail.com.

Additional information can be found on the McHenry Garden Club website at www.mchenrygardenclub.com.



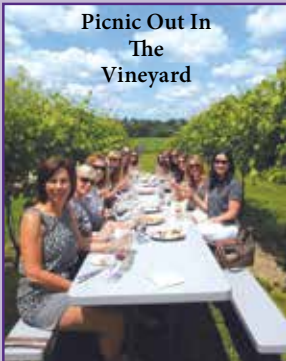
at left:
Jennifer Hunt, as commentator for one of the McHenry Garden Club's flower shows, explains the variety of flowers in one of the arrangements.

far left:
Raffle gifts such as this are created by members of the club. Tickets for the raffle are purchased and then placed near the prizes guests hope to win.

COURTESY MCHENRY GARDEN CLUB
Spirit of the Lakes

STALLER ESTATE WINERY

Picnic Out In The Vineyard



RELAX in our gazebo and sunroom with some friends and a glass of Award Winning Staller Estate Wine

W8896 County Hwy. A
Delavan, WI
(608) 883-2100
www.stallerestate.com

Gift Giving Made Easier

- Wine Flights
- Bachelorette Parties
- Glass Painting Parties
- Special Packages
- Delicious Picnic Platters
- Wine & Chocolate Pairings
- Ultimate Wine Flights
- Charcuterie Boards
- Barrel Cellar Tastings
- NEW Bourbon Barrelaged Wines



Enjoy a beautiful view of the vineyard

OPEN

June-August: Daily 11 a.m.-6 p.m.;
September-May: Wed.-Sun. 11 a.m.-6p.m.

Bachelorette • Weddings • Engagements • Birthdays

432375

AMB ROOFING

RESIDENTIAL • COMMERCIAL

& SHEETMETAL

Building Relationships One Roof At A Time

RESIDENTIAL - COMMERCIAL

Shingle Roofs • Metal Roofing

Flat Roofs • Metal Siding

Gutters • Repairs

We Now Offer Financing!

FREE ESTIMATES

(815) 385-2621



Visit us at
www.ambroofing.com

More than 100 years of sweetness

Anderson's Candy Shop can make Easter, or any day, sweeter

by **Sandra Landen Machaj**
CORRESPONDENT

When driving along Highway 12 in Richmond, Illinois – whether on the road to or from Lake Geneva, or just out for a drive, the sight of the “open” sign on the front door at Anderson’s Candy Shop is a sign anyone with a likeness for chocolate and candy won’t want to ignore.

For those who have yet to visit Anderson’s and decide to stop, be prepared because once inside the famous candy shop, the fragrant aroma of freshly made, quality chocolate could make leaving without a bag full of sweet treats challenging.

The choices are seemingly endless – chocolate creams, chocolate with nuts, chocolate covered strawberries, toffee covered with chocolate, milk chocolate or dark chocolate, or maybe keep it simple with a plain chocolate bar. Except there is nothing plain about Anderson’s candy.

At this time of year, many people come into the store to purchase Easter candy, as a special treat in an Easter basket or as part of a gift for the host of this year’s Easter gathering. But purchasing candy early might lead to another issue – a need to replenish it prior to Easter’s arrival, in the event the giver can’t resist the temptation to indulge.

“Easter candy season begins when Valentine’s Day ends,” said Katie Anderson-Tedder, daughter of Leif Anderson and a member of the fourth generation of the Anderson family to produce their famous candies.

“This year Easter is early – the last weekend of March so we only have about six weeks of Easter candies as compared to 10 weeks when Easter falls in late April,” she added.

After Valentine’s Day has passed, trays of crème- and marshmallow-filled chocolate eggs, and chocolate bunnies are



above: The chocolates made at Anderson's are still hand formed by staff.
at left: The sign in front of the business, which is on Highway 12 in Richmond, welcomes customers.

SANDRA LANDEN MACHAJ
Spirit of the Lakes

on the cover: Make someone special smile with this small spring basket featuring a variety of treats.

COURTESY
ANDERSON'S CANDY SHOP
Spirit of the Lakes



above: Anderson's makes chocolate bunnies in a variety of poses for the Easter holiday.

SANDRA LANDEN MACHAJ *Spirit of the Lakes*



top right: A favorite Easter treat for many is the Krispy Nest, complete with jellybeans on top that look like small bird eggs.

COURTESY ANDERSON'S CANDY SHOP *Spirit of the Lakes*

being made in the kitchen at Anderson's. That's not all as the shop itself – including an area that has gifts – is transformed into somewhat of an Easter wonderland.

Big city beginning

Anderson's Candy was established in Chicago in 1919. That year, Arthur Anderson left the most famous candy company in Chicago his late grandson, Leif Anderson, explains on the company's website.

Arthur began his own company in a small shop on Armitage Avenue in Chicago after receiving a make-good gift of flavoring and chocolate from local flavoring and chocolate companies. If he was successful, he was to pay them back.

He was successful indeed, but due to the rising rents in the city, Arthur moved his business – and his family – to the little community of Richmond in McHenry County.

Arthur purchased a family home and used the front porch and the living room to sell his candy during the cool months and ice cream in the summer.

The home was in a good location as it would become Route 12, which brought visitors past his door on their way to southern Wisconsin – especially to Lake Geneva – who stopped to purchase his chocolate.

The year 1933 was important for the Anderson candy business. It was the year of the Chicago World's Fair, so Arthur and his family visited the big event like many other families. However, he came home after purchasing an air conditioner – the first air conditioner in McHenry County. It was a life changing purchase because it allowed him to make and sell his chocolates year-



Katie Anderson-Tedder shows pans of cream eggs being made for Easter. She's part of the fourth generation helping run the family business.

SANDRA LANDEN MACHAJ *Spirit of the Lakes*

round, as they would no longer melt in the hot showroom.

The candy business went well until the Great Depression and World War II. During the depression, people did not have the money to purchase special treats such as candy.

During World War II, the store almost closed due to the rationing of chocolate and sugar, both of which were needed to create the delicious chocolates that Anderson's customers expected. The family would save their rations of chocolate and sugar until they had enough to make a batch of candy. Then they would open the store and sell out in a few hours, even with limits on the amounts a customer could purchase.

After the war, Raynold Anderson, Arthur's son, returned home from serving in Europe and took over the daily operation of the business. He is credited with expanding the business with help from the post war boom in the economy. People traveling more than ever lead to many passing the candy store while traveling between Rockford, Chicago, and Lake Geneva, among other locations, with many of them stopping at Anderson's Candy Shop to purchase candy and visit with the humble candymaker and his family.

Tried and true

Throughout the years, the recipes and cooking methods remained the same as



Anderson's Candy Shop is still run out of the home Arthur Anderson purchased upon moving from Chicago to Richmond in 1926.

SANDRA LANDEN MACHAJ *Spirit of the Lakes*

they have been passed down.

In the 1980s, Raynold's sons, Leif and Lars, took over the business with the same, simple goal of producing quality candies they were proud to label as Anderson's.

Lars retired and in 2021 Leif died, yet the business continues to be run by the family. Leif's widow, Tracy, along with his

daughter Katie continue to see the business flourish.

Each generation has kept the business in the same location – the house that Arthur purchased in 1926 – and continues to produce Anderson's candy the old-fashioned way by cooking it in small batches using quality ingredients.

**Lighting & Lamps, Home Décor,
Wall Art, Mirrors, Fans ...**

Light Up Your Home

with
**Caravelle
Lighting**

9307 S Rt. 12, Richmond, Ill.
815-678-4558 * www.caravellelight.com
Hours: Tues. 9-6; Wed.-Fri. 9-5; Sat. 10-2;
Closed Sun. & Mon.

450839

One change made, an expansion really, was in 2012 when the family opened a second retail outlet in downtown Barrington.

“While we have a retail outlet in Barrington, we continue to make our candy in Richmond as it has always been,” Katie explained.

Easter candy galore

There are a variety of popular options for Easter candy at Anderson’s and that can create a dilemma. If purchased well in advance, they might not make it to the holiday. But waiting until just before Easter could mean not all of the choices will be available.

Marshmallow eggs are a longstanding favorite, according to Katie, who said they ship them all over the country. They’re unique because each is hand poured and they make the marshmallow centers from scratch, unlike some places which buy pre-made centers and then cover them with chocolate.

Among the most popular marshmallow eggs are those flavored with Bailey’s Irish Cream but that’s just the beginning of the flavors Anderson’s features.

“We also produce nine different flavors of cream filled eggs which come in a variety of sizes, from 2 ounces to 1 pound. The 2-ounce eggs are the most popular and fit well into an Easter basket for an individual to consume. The 4-ounce, 8-ounce, and 1-pound eggs are usually sliced and served,” Katie explained.

The flavors of crème filled eggs include buttercream, coconut, fruit and nut, maple nut, marzipan, marble and peanut butter cream.

A Krispy Rice Nest is another seasonal treat. What looks like a small bird’s nest is made from rice cereal covered with chocolate, milk chocolate or dark chocolate. On top – looking like little bird eggs – are colorful jellybeans.

There are solid chocolate bunnies in a variety of poses – available in white, milk or dark chocolate. Other solid chocolate candy made for Easter are lambs and crosses.

And for those shoppers seeking a complete package, Anderson’s has several Easter baskets and towers available, filled with a variety of their homemade candy and other novelties.

Any time of the year

While Easter is the current focus, Anderson’s has something suitable for every special occasion including birthdays, baby or bridal showers, weddings and anniversaries, and Mother’s Day and Father’s Day, and graduation.

One of the special offerings is a pretzel rod bride and groom – fully dressed, in chocolate of course – and sure to bring a smile and extra bit of sweetness to any wedding.



The gift shop area carries a variety of items with Easter among the current offerings.

SANDRA LANDEN MACHAJ *Spirit of the Lakes*

Other specialties available include chocolate strawberries, favor boxes and bags, chocolate monogram initials and platters featuring a variety of Anderson’s candy.

Boxed chocolates of many varieties and sizes – from maraschino cherries, salted caramels and fudge to fruits, nuts, meltaways, creams and more – are always an option.

And let’s not forget Anderson’s handmade candy bars, which come in enough flavors to try a different one every day for a month.

Anyone looking for a treat for themselves or seeking to bring a little sweetness to someone special in their life should consider visiting the shop.

Anderson’s Candy Shop is at 10301 N. Main St. in Richmond. For more information, call 888-214-7614, visit www.andersonscandyshop.com or follow them

on Facebook. Current hours are Sunday and Monday, 10 a.m. to 4 p.m. and Tuesday through Saturday, 9 a.m. to 5 p.m.

The second store is at 128 E. Main St. in Barrington, which can be reached by phone at 847-304-7985. Note that the Barrington store may have a more limited selection so customers looking for a specific type of candy are encouraged to call in advance for details on what’s currently available. Current hours in Barrington are Sunday, 10 a.m. to 2 p.m. and Monday through Saturday, 10 a.m. to 5 p.m.

Several retail stores sell limited varieties of Anderson’s candy including: in Illinois – The Inside Scoop in Crystal Lake and Waker’s Bluff Casino & Resort in Cartersville; in Wisconsin – Pesche’s Greenhouse, and Grand Geneva Resort in Lake Geneva, Friends on the Square in Elkhorn, and Berkot’s Fresh Food Market in Burlington.



A roof over our heads

AMB Roofing offers installation and service in Illinois, Wisconsin

by **Sandra Landen Machaj**

CORRESPONDENT

Every building has a roof but when they are doing their job, they're rarely given much thought. That is until it begins to fail due to age or damage at which time there is great concern. Fortunately, a good roof, when properly installed and maintained, can last for many years.

"Using top quality shingles and having the roof properly installed assures the customer that the roof will do its job, that is keeping the inside of the house dry," shared Jason Niemi, a project coordinator/estimator with AMB Roofing, a family-owned roofing company that services and installs roofs in southern Wisconsin and northern Illinois.

AMB is often called for a roof inspection because of snow and ice on the roof, especially on an older roof, as it can cause serious problems.

"The problem with roofs is often due to improper insulation of the attic space beneath it," Niemi explained. "For that reason, we often recommend having an insulation contractor inspect the area and recommend what type of insulation is needed for a tight seal between the roof and the attic space."

There are several ways that moist warm

air can make its way into the attic space between the ceiling of the house and the roof. One is warmer air escaping through a vent such as from a fan, meaning the air is drawn back into the attic by the soffit vents. Another is when there's not enough insulation in the attic to separate it from the air in the home.

Mike McNish, of Anchor Building Solutions, often works with AMB to determine the need for additional insulation in the attic to make certain it's tightly sealed. He recommends having the attic space on the underside of the roof coated with sprayed on foam insulation to be certain that the seal is tight and there is no air moving in or out through the roof.

Damage from weather

Damage to a roof can be due to snow which, can pull the sandpaper granules off the shingles. This may occur over several years with small amounts being worn down each year and continue to cause enough wear that granules have been removed making the shingles no longer effective.

One of the main things that can cause damage to a roof as well as the interior of a home is when an ice dam forms on the roof. In many cases, the homeowner

doesn't realize there is an ice dam until they find water coming through the ceiling. If not noticed early enough, it can damage the ceiling insulation, and even floors and furniture in the home.

"The ice dams frequently occur when there have been periods of melting and refreezing," Niemi said.

During the formation of an ice dam, the snow buildup melts during the day and then the top layer of it refreezes during the night. With an ice dam forming at the edge of the roof, there is nowhere for the melted water to pool so it will go through the shingles and into the house causing damage to the interior of the home.

There are steps homeowners can take to try to prevent damage to a home from ice dams themselves – or hire a professional to do, the first of which is to use a roof rake to pull the snow off the eaves.

And there are things the experts at AMB do not recommend.

"I am not a fan of heat cables, which are often installed on the roof edge to melt the snow. It doesn't really fix the problem but rather just hides it," said Niemi. "They also burn out quickly, so they don't really solve the problem. For these reasons we do not install them."

This new build home has a variety of roof styles from steep to flat along with varying sized peaks. While the majority of the roof features shingles, there is also a portion where metal roofing was installed, adding to the overall aesthetic appeal of the home.

COURTESY AMB ROOFING *Spirit of the Lakes*

Family-owned business

AMB Roofing was founded in 1999 by Art Bentz after 20 years of working for commercial roofing contractors. During that time Bentz learned a lot about metal roofing and envisioned more metal roofing being used on residential buildings.

Metal roofs are known for their longevity and energy efficiency. They're often used on commercial buildings but more frequently are seen on high quality private homes in the area.

Although Bentz looked to bring the metal roof to the home market, he also continued to install quality shingled roofs to homes in the lower Wisconsin and upper Illinois area. On some homes, they have also used a combination of metal roofing in some areas of the roof and architectural shingles on others giving the home a stunning roof design.

Bentz still runs the business, which features several family members holding prominent positions in the company and follow his philosophy of providing quality roofing to both residential homes and commercial buildings.

"The top three producers of shingles are Owens Corning, Certain Teed and GAF," Niemi said. "Any of these will give you a quality roof that will last many years if they are properly installed. So, it's important not only to pick a quality shingle but a reputable roofing company to install the roof."

While they produce two different lines of shingles – higher-end designer shingles and architectural shingles, the architectural line is the most popular, largely because of cost as it's less expensive than the designer line.

It's currently not easy to get designer line items as they are not readily available. Since Covid, the special lines were shut down to concentrate on the popular architectural line due to limited production.

"Certain Teed seems to be the only one who has the designer shingles at this time, and they only have limited supplies," Niemi explained.

Shingles last for a long time. Many are considered to be 30-year shingles, but Niemi suggests counting on less time than that to have the roof checked for wear and possibly replacement.

"Your roof needs to be inspected before selling the house and there is a charge for that as it is a thorough inspection to assure that it is a safe roof," Niemi said. "If you are just wondering if you need to replace the roof we will come out and check the roof, let you know how soon you should consider replacing the roof, and give you a free estimate on the cost of replacing the roof."

Options to consider

Roof shingles come in a variety of colors to compliment the color and style of any home. The most popular colors have been driftwood which has a grayish look, and black sable with gray remaining popular the



top: Not all homes have a single type of roof, such as this home, which features metal roofing as well as the more traditional architectural shingles. **above:** A green metal roof is an ideal look on this modern log home. Metal roofs can last up to 50 years, compared to a 20- to 30-year lifespan of traditional shingles.

COURTESY AMB ROOFING *Spirit of the Lakes*

past few years. This current color of the year is Williamsburg Gray, according to Niemi.

For those wondering what happens to the old shingles once they've been removed from a home or building, they will not end up in a landfill if using AMB to replace the roof.

Building materials account for 5% of landfills so in an effort reduce that percentage, AMB continues to recycle all the shingles they remove. They're picked up by Direct Source and taken to Rooftop

Recycling in Elkhorn, where it's absorbed, ground down and recycled into pavement for local roads.

Metal roofs are a favorite choice of AMB staff, in part because they feature many advantages. Metal roofs last for up to 50 years so most homeowners will never have to replace it. Metal roofs are energy efficient, too, saving homeowners up to 40% on energy costs in the summer as the metal deflects heat instead of absorbing it as shingles do.

Strang Funeral Home OF ANTIOCH

Serving the
area since
1912



Licensed in
Wisconsin
& Illinois

DAVE MOORE, DAN DUGENSKE, DIRECTORS
1055 S. Main Street - Antioch, IL
847-395-4000 or 800-622-4441
www.strangfh.com

451566

The metal roofs give a home an entirely different, yet attractive look. Some homes – usually larger ones – have a combination of shingles and metal roof, the latter of which adds a sleek, modern look to a home.

Metal roofs are always a good fit, according to Niemi, as the Berridge portable forming machine allows the roofing company to run standing seam panels to precise measurements. The metal roof is secured with screws so it won't blow off in high winds.

"The one disadvantage of the metal roof is that it is much more expensive, about three times that of a traditional shingles roof. And of course, the larger the home, the more the roof will cost. On the other hand, it also lasts much longer – up to 50 years, as compared to 20 or 30 years for a shingle roof. And it presents an exquisite architectural style to the home," Niemi explained.

For homeowners, now is a good time to purchase energy efficient improvements for their homes. Since 2023, homeowners can receive up to 30% back through tax credits for making energy efficiency improvements to their home – generally up to a maximum of \$1,200 per year – through the Inflation Reduction Act.

Homeowners are advised to take the time now to have the roof and insulation inspected to be certain it's ready to withstand whatever the weather brings.

Setting up an appointment with AMB staff to examine a roof will include them determining how soon it will likely need to be replaced. They will also share the latest information customers should consider when it's time to replace the roof.

AMB Roofing and Sheetmetal is at 2516 Hiller Ridge, Johnsburg, Ill. They can be reached by calling 815-385-2621 or visiting the website at www.ambroofing.com. The office is open Monday through Friday from 8 a.m. to 4 p.m. and is closed Saturday and Sunday.

For information on replacing or adding to the insulation in your home, contact Anchor Building Solutions Inc at 815-388-5155 or visit the website at www.absfoam.com.

GYPSY GLEN

K9 KASTLE • PET RESORT

Give a Howl 4 Treating Pets Like Royalty Since 1988



- Dog Boarding
- Dog Day Care
- Animal Acupressure
- Swim Club
- Natural Products

Thank you for being a loyal customer for over 35 years!

815.385.8585 • McHenry • gypsyglenk9kastle.com

442984



CARPETS PLUS OUTLET

We're Flooring Experts
You Can Trust!

Quality - Value - Service - Satisfaction

Family-Owned & Operated

Proudly serving Kenosha County and surrounding areas since 1997

Carpets • Hardwood • Vinyl • Ceramic Tile
LVP/LVT • Carpet Remnants • Custom Rugs

Window Treatments

Interest Free Financing*
Professional Installation



(262) 883-9494 • 1241 22nd Ave., Kenosha
carpetsplusoutlet.com

**SUBJECT TO CREDIT APPROVAL. MINIMUM MONTHLY PAYMENTS REQUIRED. SEE STORE FOR DETAILS.

433444



Top Drivers Can
Earn Up To \$100K!

Veteran's Truck Line INC.
in Burlington, Wis is now accepting applications for:

TRUCK DRIVERS

- Home most nights/every weekend
- Paid health benefits • Competitive Hourly Wages
- Time & 1/2 over 40 hours • 401(k) w/contribution
- Drive newer equipment • Paid vacations/holidays
- Paid life/disability
- Must have a Class A CDL and pass medical/drug screen

262-539-4460

Go to:
www.vetstruck.com
for applications

433770

Thompson SPRING GROVE FUNERAL HOME

Debbie Thompson
Owner
Licensed Funeral Director,
Embalmer, CPC

Pre-Planning • Cremation • Full Service Funerals
Urns • Monuments • Cremation Jewelry

8103 Wilmot Road
Spring Grove

815-675-0550
ThompsonSpringGrove.com

420526



LUISA'S

Since 1996...



GOING EAST...GOING WEST... Discover The Best!

Just off Hwy. 50 ~ 12 miles east of Lake Geneva

Serving Chicken, Ribs & Pasta

Superb Italian & American Cuisine

PIZZA! PIZZA! PIZZA!

Classic thin crust, pan, stuffed & hand-tossed

Thursday
30% Off Food
Only
with cash

Wedding
Rehearsal
Dinners &
Wedding
Catering!

PASTA - SANDWICHES
BURGERS & SO MUCH MORE!

DINE-IN, CARRY OUT,
DELIVERY, CATERING

Call ahead on your way to or
from Lake Geneva and We'll
Have it Hot & Ready!

www.luisaspizza.co



Hwy. 50 & 317th Ave., Wheatland • 12 Miles East of Lake Geneva
262-537-4795

437149

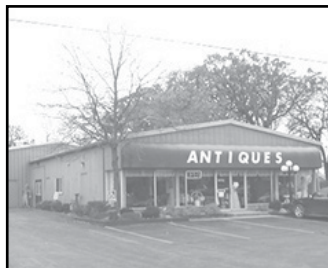
Always Remember That
Antique Mall

Antiques • Collectibles
Decorative Items

10,000 sq. ft.
100+ Dealers

RememberThatAntiques.com **262-843-1786**

ITEMS SO UNIQUE, YOU CAN DESIGN A ROOM AROUND THEM



Our items date from the Civil War Era to
today's hottest Collectibles & Decorative Items

Open 7 Days A Week 10 a.m.-5 p.m.

WE ARE BIGGER THAN YOU THINK!

On HWY 50, 1/2 mile West of McDonald's in
Paddock Lake, 18 minutes east of Lake Geneva, WI



228169



HEATING • AIR CONDITIONING • ALL MAJOR APPLIANCES & MORE

"Your Complete Service Company Since 1970"

UNSTOPPABLE COMFORT. UNBELIEVABLE DEALS.

PROMOTION

INSTANT REBATE
UP TO **\$650**

TRANE

UNSTOPPABLE EVENT

ADDITIONAL INSTANT REBATE OFFERS AVAILABLE

10 YEAR
PARTS AND LABOR
WARRANTY WITH
PURCHASE OF
TRANE FULL SYSTEM

UP TO \$2,000
COMED REBATE ON
NEW TRANE HEAT PUMP
HVAC SYSTEM

UP TO \$3,000

IN REBATES
AND
TAX CREDITS
ON
MITSUBISHI
MINI SPLIT
SYSTEMS

UP TO \$2,000
TAX CREDIT ON NEW
TRANE HEAT PUMP
HVAC SYSTEM

UP TO \$1,000 OFF
HIGH EFFICIENCY
BOILER

CALL TO LEARN ABOUT OUR DISCOUNT CLUB MAINTENANCE PACKAGES STARTING AT \$225

847-215-9880

www.commandservice.com

*The Wells Fargo Home Projects credit card is issued by Wells Fargo Bank, N.A., and Equal Housing Lender. Special terms apply to qualifying purchases charged with approved credit. The special terms APR will continue to apply until all qualifying purchases are paid in full. The monthly payment for this purchase will be the amount that will pay for the purchase in full in equal payments during the promotional (special terms) period. The APR for Purchases will apply to certain fees such as a late payment fee or if you use the card for other transactions. For new accounts, the APR for Purchases is 25.99%. If you are charged interest in any billing cycle, the minimum interest charge will be \$1.00. This information is accurate as of 03/01/2023 and is subject to change. For current information, call us at 1-800-431-0321. Offer expires 4/30/24.

431545



verlo M A T T R E S S

CUT OUT THE MIDDLEMAN AND SAVE

Built locally just for you.

verlo takes pride in building your mattress in our LOCAL MATTRESS FACTORY, located right in our store.

This CUTS OUT THE MIDDLEMAN to keep prices affordable for you.

SLEEP. LOUNGE. WHATEVER. BETTER.



Adjustable Bed Bases* \$399

Twin XL Starting @

*with Verlo Mattress purchase. Does not apply to previous purchases. See store for details.



v1 FIRM 1-Sided No Flip

QUEEN SET STARTING @

\$599

TWIN \$449 FULL \$549 KING \$799



v3 PLUSH 1-Sided No Flip

QUEEN SET STARTING @

\$899

TWIN \$649 FULL \$799 KING \$1149



v5 FIRM 1-Sided No Flip

QUEEN SET STARTING @

\$1249

TWIN \$899 FULL \$1149 KING \$1599



v7 PLUSH 1-Sided No Flip

QUEEN SET STARTING @

\$1599

TWIN \$1199 FULL \$1499 KING \$2099

SAVE UP TO \$150 OFF v5 Set Purchase*

SAVE UP TO \$200 OFF v7 Set Purchase*

SAVE UP TO \$250 OFF v9 Set Purchase*

SAVE UP TO \$300 OFF v11 Set Purchase*

*On set purchase with factory select covers. Not applicable on previous purchases. One coupon per set purchase. See store for details.



Only Verlo guarantees you'll be comfortable for the lifetime of your mattress.

Since we build your mattress in our local factory, we can easily adjust it for you throughout the years. A little softer here... a little firmer there. With Verlo's Lifetime Comfort Guarantee, you can just get comfortable - and stay comfortable.

CUSTOM MATTRESSES

RVs, Campers, Boats & So Much More!

Available in innerspring & foam mattresses.



Thank You for continuously voting us One of the Best Mattress Stores



FINANCING AVAILABLE See store for details.

More than 20 Single and Double-Sided Models to Choose From.

LAKE GENEVA 2462 Hwy 120 262.249.0420

CRYSTAL LAKE 5150 North West Hwy 815.455.2570

McHENRY 3710 West Elm St. 815.578.8375

verlo.com 800.224.VERLO