

173<sup>rd</sup>

WALWORTH COUNTY

# FAIR



WALWORTH  
COUNTY  
FAIRGROUNDS

411 E. Court St. • Elkhorn  
[walworthcountyfair.com](http://walworthcountyfair.com)

# KUNES

**NEW | PRE-OWNED | COMMERCIAL | RV**



CELEBRATING  
 **25** Years  
KUNES

## Why shop Kunes?

  
FAMILY FOUNDATION

10% of our annual net profits donated to charities in our communities through the Kunes Family Foundation.

**FRESH  START**  
FINANCING PROGRAM

Fresh Start Program to help those with credit challenges so they can get to work and take care of their families.

**EZ  Payment**

EZ Payment program to pay off your auto loan faster with manageable payments.

**NO  FEAR**  
LIFETIME CERTIFIED

Kunes No Fear certified vehicles so you can drive off with peace of mind.

# We make it EASY!



# Kunes.com

Faith | Family | Giving Back

# 'BEE HAPPY' AT THE FAIR



## WALWORTH COUNTY FAIR SET FOR ANOTHER RUN

BY **Tracy Ouellette**

EDITOR

The 173rd annual Walworth County Fair will be at the county fairgrounds, 411 E. Court St., Elkhorn, from Wednesday, Aug. 31, through Labor Day, Sept. 5.

The County Fair celebrates the area's youth and agriculture with contests, animal shows and projects. The family friendly event attracts large crowds during its six-day run, offering kids of all ages great food, fun rides, interesting displays, live music and more.

The Honorary Fair Marshalls for 2022 are Walworth County Sheriff Kurt Picknell and the late former Walworth County Board Chairperson and friend on the fair Nancy Russell, being represented by her family.

The 2022 Fairest of the Fair is Jessica Markham with Royalty Lillie Cauffman. The 2023 Fairest will be crowned after the finals at 6 p.m. Wednesday, Aug. 31.

### New this year

Walworth County Fair Manager Larry Gaffey said the fair has some new food vendors this year and will feature three big concerts at the Grandstands instead of the normal two. Josh Turner with special guest Phil Vassar will be on stage Friday, Sept. 2. Halestorm with Lines of Loyalty and Shallow Side take the stage Saturday, Sept. 3, and Foreigner plays Sunday, Sept. 4.

Also new this year is the Tanis Construction Birdhouse Build Off where a kid can win \$5,000 for the best bird house, Gaffey said.

The fairgrounds have updated some of

**IF YOU GO...**

**WHAT:** 173rd Walworth County Fair  
**WHERE:** 411 Court St., Elkhorn  
**WHEN:** Aug. 31 to Sept. 5  
**COST:** \$12 for adults, \$7 for kids, at the door  
**INFO:** [www.walworthcountyfair.com](http://www.walworthcountyfair.com)

its décor as well.

"New bright colors painted on some of our buildings to match and support the new Walworth County Tourism logo – Gowalco.com," Gaffey said.

Also new this year is the Plein Air at the Fair competition. Fairgoers can see participating artists create art inspired by and created solely the Walworth County Fair.

### Judging and demonstrations

For the area's youth, the fair is a culmination of a year's worth of work, whether it be with animals or agriculture projects and displays.

From baking to vegetable growing to animal raising, the county's best and brightest proudly display their work at the fair.

One of the highlights of the fair is the annual Meat Animal Sale, which is the largest in the state, Gaffey explained.

"Even bigger than the State Fair," he said.

Gaffey added that the area's youth are the lifeblood of the fair.

"The level of participation in fair exhibits by youth in the area is second to none. The number of open class exhibits is overwhelming. The total number of exhibit entries for the fair is usually over 15,000," Gaffey said.

"My opinion is the Walworth County Fair is one of the most wonderful family events in the upper Mid-west," he added. "The hundreds of volunteers including volunteer board members, superintendents, committee members, businesses and the fair staff that pull this event together are some of the finest people in the world."

More than 55 non-profits, including civic organizations, churches and more, benefit from the fair," Gaffey said.

"For most it is their largest fundraising

event of the year," he added.

Those non-profits range from local churches and other organizations that run food stands to the Walworth County Historical Society's annual book sale in the park.

As for Gaffey, he said he's just looking forward to welcoming people back to the fair and maybe getting a chance to enjoy his favorite activities.

"The Horse Pulls on Labor Day morning, Home Economics exhibits, seeing families smiling and laughing and of course the food!" he said of his favorites.

For more information and discounted advance admission tickets, visit [www.walworthcountyfair.com](http://www.walworthcountyfair.com).

**WALWORTH COUNTY FAIR 2022**

Southern Lakes Newspapers  
 1102 Ann St. • Delavan, WI 53115 • 262-728-3411

Editor: ..... Tracy Ouellette  
 Editor in Chief: ..... Edward Nadolski  
 Page Design: ..... Jen DeGroot  
 Creative Director: ..... Heather Ruenz  
 Advertising Director: ..... Vicki Vanderwerff

**For advertising opportunities call 262-725-7701, ext. 134**

**on the cover:** The Walworth County Fair features a large midway during its six-day run. Wristband specials are available during the fair.

CHAD HENSIKAK *Walworth County Fair*

### FURNITURE WITH ATTITUDE

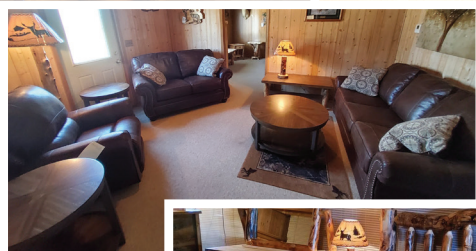
Upholstered & Log Furniture



FINANCING AVAILABLE



**OPEN**  
Tues, Wed, Thurs 10 a.m. - 5 p.m.  
Fri & Sat 10 a.m. - 4 p.m.



N4522 County Road F,  
Elkhorn, WI  
15 min. from Lake Geneva

[www.therusticrealm.com](http://www.therusticrealm.com)

Find us on Facebook

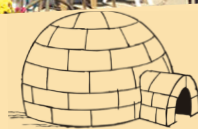


Unique & Distinctive

422589



# DADDY MAXWELL'S



Check out our website [DaddyMaxwells.com/menu](http://DaddyMaxwells.com/menu) or call for our Daily Specials!



## Featuring All Homemade

- Daily Lunch Specials • Soup
- Pies & Cakes

**IN ADDITION WE OFFER:**

- Daily Breakfast Specials
- Friday Fish Fry



Monday, Wednesday, Thursday 7:00 a.m. - 2:00 p.m.; Friday 7:00 a.m. - 7:30 p.m.  
Saturday 7:00 a.m. - 2:00 p.m.; Sunday 7:00 a.m. - 1:00 p.m. • CLOSED TUESDAY

150 Elkhorn Road • Williams Bay, WI 53191  
262-245-5757

422756

## VETERAN'S TRUCK LINE INC.

in Burlington, Wis. is now accepting applications for:

# TRUCK DRIVERS

- Home most nights/every weekend
- Paid health benefits
- Hourly pay starting at \$23.00
- Time & 1/2 over 40 hours
- 6 month \$24.00
- 401(k) w/contribution
- Drive newer equipment
- Paid vacations/holidays
- Paid life/disability
- Must have Class A CDL and pass medical/drug screen

**CALL NOW:**

**(262) 539-4460** Ask for Don

Go to [www.vetstruck.com](http://www.vetstruck.com) for applications.

422028

## Distinctive Landscape-Design & Installation



- YEAR-ROUND TREE SERVICE • CERTIFIED ARBORIST
- PATIOS • RETAINING WALLS • LANDSCAPING

# B&J TREE AND LANDSCAPE SERVICE, INC



262-248-3653

[www.bandjlandscape.com](http://www.bandjlandscape.com)  
W2795 KRUEGER RD.  
LAKE GENEVA  
[office@bandjtree.com](mailto:office@bandjtree.com)

Serving You Since 1959





# ADMISSION

Adult admission, \$12  
 Junior (ages 5-12), \$7  
 Children (younger than age 5), admitted FREE  
 Adult season ticket, \$45  
**Senior Days:** Wednesday, Thursday and Friday (age 62 years and older), \$10  
**Lifetime memberships,** \$350  
 Prices are "at the door" admission.

**Free general parking**  
 VIP parking, \$50 (VIP Parking is a reserved spot for the entire fair season.)  
 General parking is free to the public.  
 For more information, call 262-723-3228 or visit [www.walworthcountyfair.com](http://www.walworthcountyfair.com).

# DAILY EVENTS

- Antique Tractor Display, Machinery Lot
- HCE Exhibits and Demos, Log Cabin
- North American Midway Entertainment
- Barnyard Adventure
- Kiddieland
- Midway Area
- Discovery Barn
- Music on the Park Stage
- Walworth County Historical Society Used Book Sale in the park, daily 10 a.m. – to 7 p.m.

# SCHEDULE of EVENTS

The Walworth County Fairgrounds are open 7 a.m. to midnight, except Monday, Labor Day, when it closes at 8 p.m.

## Wednesday, Aug. 31

*Honorary Marshals Day  
 Senior Citizens Day,  
 admission for 62 and older, \$8  
 Most Black and Yellow You Can Wear Fair Guest Contest  
 North American Midway Entertainment Wristband Day, 3 to 11 p.m., \$30*

**Judging and demonstrations**  
 8 a.m. – Junior Swine Barrow Show, Wiswell Center  
 9 a.m. – Open Farm Products, Horticulture Building  
 9 a.m. – Dog Obedience and Showmanship, Activity Center  
 9 a.m. – Garden and Fruit Crops, Junior Exhibit Building  
 9 a.m. – Junior Flowers, Junior Exhibit Building  
 9 a.m. – Open Antiques, Antiques Building  
 9 a.m. – Open Flowers, Horticulture Building  
 9:30 am Open Photography, Arts and Crafts Building  
 Noon – Open Foods, North Hall  
 4 p.m. – Junior and Open Honey Show, Barnyard Adventure Barn  
 6:30 p.m. – Open Adult Dairy Showmanship, Activity Center

**Park Stage**  
 10 a.m. – Opening Ceremony, Honorary Marshals  
 Noon – Frank 2 Frankie  
 3 p.m. – Yves Francois Rocambu Jazz  
 6 p.m. – Fairest of the Fair Finals

**Gazebo in the Park**  
 2 p.m. – Most Black and Yellow You Can Wear Contest

**WSLD Music Hall**  
 Noon – WSLD Radio Broadcast  
 6 p.m. – Thompson Duo

**Kiddieland**  
 Noon, 2 p.m. – 6 p.m. – Nick's Barnyard Adventure Show, Kiddieland Stage

3 p.m. – and roaming throughout the day Magic "Mike" Magician, Kiddieland Stage  
 12:30 p.m., 2:30 p.m., 4:30 p.m., 6:30 p.m. – Dave Watson Chainsaw Artist  
 1:30 p.m., 3:30 p.m., 5:30 p.m. – Marvelous Mutts

**Barnyard Adventure Tent and Garden**  
 4 p.m. – Honey Show Judging Junior and Open Class, Barnyard Adventure Barn  
 5 p.m. – Surprise Make and Take for Kids, tent  
 5 p.m. – Butterfly Release, Barnyard Garden

**Barnyard Adventure Learning Coop**  
 10 a.m. – Water Containers by Pesche's Greenhouse  
 11 a.m. – Beekeeping 101 with Bee Haven Honey  
 Noon – Stone Finishes, The Sailor's Wife Interior Art

**Grandstand**  
 Noon – Antique and Stock Tractor and Truck Pulls  
 6 p.m. – American Legion VFW Flag Ceremony  
 7 p.m. – Pro Motorsports Tractor and Truck Pulls

## Thursday, Sept. 1

*Senior Citizens Day  
 Admission for 62 and older, \$8  
 Best Bee-Dazzled Fair Guest Contest  
 North American Midway Entertainment Wristband Day, Noon to 10 p.m., \$30*

**Judging and Demonstrations**  
 8 a.m. – Junior Beef, Activity Center  
 8 a.m. – Junior Sheep, Sheep Barn  
 9 a.m. – Junior Cavies, Small Animal Barn  
 9 a.m. – Open Arts and Crafts, Arts and Crafts Building  
 9 a.m. – Open Canned Goods, North Hall  
 5:30 p.m. – Plein Air Art, Arts and Crafts Building following completion of Judging

**Park Stage**  
 10 a.m. – Outstanding Seniors, Vendor, Exhibitors and Friend of the Fair Awards  
 Noon – Steve Meisner Polka Band  
 3 p.m. – Banana Wind, The Music of Jimmy Buffett  
 6 p.m. – Almost Elton John

**Gazebo in the Park**  
 2 p.m. – Best Bee-Dazzled Fair Guest Contest

**WSLD Music Hall**  
 Noon – WSLD Radio Broadcast  
 6 p.m. – Judson Brown Duo

**Kiddieland**  
 Noon, 2 p.m., 4 p.m., 6 p.m. – Nick's Barnyard Adventure Show, Kiddieland Stage  
 3 p.m. – and roaming shows throughout the day Magic "Mike" Magician, Kiddieland Stage  
 1 p.m. – Milk Chugging contest, Kiddieland Stage  
 12:30 p.m., 2:30 p.m., 4:30 p.m., 6:30 p.m. – Dave Watson Chainsaw Artist  
 1:30 p.m., 3:30 p.m., 5:30 p.m. – Marvelous Mutts

**Barnyard Adventure Tent and Garden**  
 5 p.m. – Surprise Make and Take for Kids, Tent  
 5 p.m. – Butterfly Release, Barnyard Garden

**Barnyard Adventure Learning Coop**  
 10 a.m. – Soap Making, ABCDfarmhouse  
 11 a.m. – Coffee Tasting, the Difference in Growing Regions by Stillwater Coffee  
 Noon – Fall Containers by Bella Botanica  
 1 p.m. – Make and Take, Stamp N' Up with Laura Zaraza

**Midway Area**  
 4 p.m. – Kids Pedal Tractor Pulls registration  
 5 p.m. – Kids Pedal Tractor Pulls by Kindschi Pedal Pulls

**Grandstand**  
 7:30 p.m. – All-Star Monster Trucks

## Friday, Sept. 2

*Senior Citizens Day  
 Admission for 62 and older, \$8  
 Best Bee in your Bonnet Contest – Best Decorated Hat or Headband in Bee Fair Guest Contest  
 North American Midway Entertainment Wristband Day, Noon to 11 p.m., \$30*

**Judging and demonstrations**  
 8 a.m. – Open Sheep, Sheep Barn  
 8:30 a.m. – Junior Dairy Showmanship, Activity Center  
 10 a.m. – Draft Horse Halter Class, Draft Horse Arena  
 10 a.m. – Junior Dairy, Activity Center  
 10:30 a.m. – Junior Rabbit Showmanship, Small Animal Barn  
 1 p.m. – Dairy Auction/Miss "Q" Contest, Activity Center  
 Little Britches Contest to follow Supreme Champions  
 1 p.m. – Junior Rabbit Hopping, Small Animal Barn  
 2:30 p.m. – Junior Non-Rabbit Project, Small Animal Barn

**Wiswell Center**  
 10 a.m. – Meat Animal Sale  
 3 p.m. – Meat Sale of Champions

**Horse Arena**  
 8:30 a.m. – SMILES Open Benefit Horse Show

**Park Stage**  
 Noon – Nate and Brida  
 1:30 p.m. – The Spectaculars  
 4 p.m. – Doo Wop Daddies  
 7 p.m. – Sail On, Beach Boys Tribute

**Gazebo in the Park**  
 2 p.m. – Best Bee in Your Bonnet Contest – Best Decorated Hat or Headband in Bee Theme

**WSLD Music Hall**  
 Noon – WSLD Radio Broadcast  
 6 p.m. – JFK the Band

**Kiddieland**  
 Noon, 2 p.m., 4 p.m., 6 p.m. – Nick's Barnyard Adventure Show, Kiddieland Stage  
 3 p.m. – and roaming shows throughout the day Magic "Mike" Magician, Kiddieland Stage



Landon Rehberg, of Spring Prairie 4-H, exhibits his grand champion steer during last year's Walworth County Fair Meat Animal Sale.

# James R. Taylor and Sons INC.

## 3 Generations of Quality Work!

### Remodeling, Siding, Windows, Roofing, Kitchens, Baths



Nominate a Veteran/Active Duty Service member for a FREE Roof!



**FREE Estimates  
Fully Insured**

*"The bitterness of poor quality lingers long after the sweetness of a cheap price is gone."*



# 262-642-7970

# www.jrtaylorandsons.com

**SCHEDULE OF EVENTS** • CONTINUED FROM PAGE 5**Kiddieland Stage**

11 a.m. – Cute as a Bee, Infant/Toddler Bee Costume contest  
1 p.m. – Pickle Eating contest  
12:30 p.m., 2:30 p.m., 4:30 p.m., 6:30 p.m. – Dave Watson Chainsaw Artist  
1:30 p.m., 3:30 p.m., 5:30 p.m. – Marvelous Mutts,

**Barnyard Adventure Tent and Garden**

5 p.m. – Surprise Make and Take for Kids, tent  
5 p.m. – Butterfly Release, Barnyard Garden

**Barnyard Adventure Learning Coop**

10 a.m. – Tea Tasting, Herbal Vs. Non-Herbal by Stillwater Coffee  
11 a.m. – Intro to Sourdough and Other Preferments by Good Oak Farmstead  
Noon – Beeswax Candles and Luminaries  
1 p.m. – Make and Take, Stamp N' Up with Laura Zaraza

**Midway Area**

4 p.m. – Kids Pedal Tractor Pulls Registration  
5 p.m. – Kids Pedal Tractor Pulls by Kindschi Pedal Pulls

**Grandstand**

7:30 p.m. – Josh Turner with special guest Phil Vassar

**Saturday, Sept. 3**

*Youth In Agriculture Day*  
*Best Beehives and Buzz Cuts Hair Do Fair Guest Contest*  
*North American Midway Entertainment open Noon to 11 p.m.*

**Judging and Demonstrations**

8 a.m. – Junior Poultry, Poultry Barn  
8:30 a.m. – Junior Goats, Goat Barn  
8:30 a.m. – Open Dairy, Activity Center  
9 a.m. – Junior Rabbit, Rabbit Barn  
10 a.m. – Cart/Hitch, Draft Horse Arena  
10:45 a.m. – Pies in the Park, Pie Judging, Park Stage, Open to Everyone  
Noon – Tanis Construction Birdhouse Build O\_Judging, North Hall  
2 p.m. – Frank's Piggly Wiggly Perfectly Pickled Puckerbowl Judging, North Hall  
6:30 p.m. – Master Showman Contest, Activity Center

**Wiswell Center**

5 p.m. – Walworth County Cloggers

**Horse Arena**

8:30 a.m. – Boots and Saddle Open and Speed Show  
9 a.m. – Walenton's Rocking "B" Ranch Speed Show

**Park Stage**

10:45 a.m. – Pies in the Park, Pie contest judging and pie auction to follow  
1:30 p.m. – Lake Geneva House of Music  
4 p.m. – Gravity of Youth  
7 p.m. – Elvis Presley Tribute: A Night with the King, starring Jonathan Lyons

**Gazebo in the Park**

2 p.m. – Best Fair Guest Beehives and Buzz Cuts Hair Do Contest

**WSDL Music Hall**

Noon – WSDL Radio Broadcast  
2 p.m. – Thompson Duo

**Kiddieland**

Noon, 2 p.m., 4 p.m., 6 p.m. – Nick's Barnyard Adventure Show, Kiddieland Stage  
3 p.m. – and roaming shows throughout the day  
Magic "Mike" Magician, Kiddieland Stage  
3 p.m. – and roaming shows throughout the day

**Kiddieland Stage**

11 a.m. – FrisBee Toss contest  
1 p.m. – Sweet Corn Eating contest  
12:30 p.m., 2:30 p.m., 4:30 p.m., 6:30 p.m. – Dave Watson Chainsaw Artist  
1:30 p.m., 3:30 p.m., 5:30 p.m. – Marvelous Mutts

**Barnyard Adventure Tent and Garden**

5 p.m. – Surprise Make and Take for Kids, tent  
5 p.m. – Butterfly Release, Barnyard Garden

**Barnyard Adventure Learning Coop**

10 a.m. – Beeswax Demo with the Wisconsin Honeybee Queen  
11 a.m. – Honey Condiment Contest, Open to Everyone  
1 p.m. – Make and Take - Stampin' Up with Laura Zaraza

**Grandstand**

9 a.m. – Combines for Kids, combine rides  
Noon – Harness Horse Races  
7:30 p.m. – Halestorm with special guest Lines of Loyalty

**Sunday, Sept. 4**

*Farm Family Day*  
*Most Bee-autiful Baby Fair Guest Contest*  
*North American Midway Entertainment open Noon to 11 p.m.*

**Judging and Demonstrations**

7:30 am Open Rabbit Show Registration, tent near Small Animal Barn  
8 a.m. – Open Beef, Activity Center  
9 a.m. – Open Goats, Goat Barn  
9 a.m. – Open Rabbit Show Judging, tent near Small Animal Barn  
9:30 a.m. – Wool Fleece Contest, Sheep Barn  
10 a.m. – Hitch Class, Draft Horse Arena  
Draft Horse Parade to follow at Grandstand  
3:30 p.m. – Dairy Futurity Show, Activity Center

**Wiswell Center**

10 a.m. – to Noon – and 1 to 3 p.m. – Antique Appraisals by Barbara J. Eash, certified Appraisers Guild of America

**4-H Centennial Picnic Pavilion**

2 p.m. – Poultry Awards

**North Hall**

5 p.m. – Home Tweet Home She Shed Raffle

**Horse Arena**

8:30 a.m. – Linn Youth Benefit Open Horse Show  
9 a.m. – Walenton's Rocking "B" Ranch Speed Show

**Park Stage**

10 a.m. – Ecumenical Church Service  
Noon – Underground Sound Jazz Band  
3 p.m. – Woodcarving Auction to Benefit the Walworth County Fair Foundation  
4:30 p.m. – Dawley Family  
7 p.m. – The Britins, A Tribute to the Beatles

**Gazebo in the Park**

2 p.m. – Most Bee-autiful Baby Contest

**WSDL Music Hall**

Noon – WSDL Radio Broadcast  
2 p.m. – Thompson Duo

**Kiddieland**

Noon, 2 p.m., 4 p.m., 6 p.m. – Nick's Barnyard Adventure Show, Kiddieland Stage  
3 p.m. – and roaming shows throughout the day  
Magic "Mike" Magician, Kiddieland Stage

**Kiddieland Stage**

1 p.m. – Pie Eating contest  
12:30 p.m., 2:30 p.m., 4:30 p.m., 6:30 p.m. – Dave Watson Chainsaw Artist  
1:30 p.m., 3:30 p.m., 5:30 p.m. – Marvelous Mutts

**Barnyard Adventure Tent and Garden**

5 p.m. – Surprise Make and Take for Kids, tent  
5 p.m. – Butterfly Release, Barnyard Garden

**Barnyard Adventure Learning Coop**

10 a.m. – Make and Take, Nailed It by DIY Elkhorn  
11 a.m. – Growing Vegetables by Pesche's Greenhouse  
Noon – Picture Frame Edging by The Sailor's Wife Interior Art  
1 p.m. – Cookie Decorating by Farmhouse Sweets

**Grandstand**

11 a.m. – Antique Tractor and Car Parade  
7:30 p.m. – Foreigner

**Monday, Sept. 5**

*Labor Day*  
*Queen Bee for the Day Fair Guest Contest*  
*North American Midway Entertainment Wristband Day, Noon to 8 p.m., \$30*

**Wiswell Center**

11:30 a.m. – Fur and Feather Sale

**Horse Arena**

8 a.m. – Wisconsin Open Horse Show Association, Open Horse Show  
9 a.m. – Walenton's Rocking "B" Ranch Speed Show  
11 a.m. – Timmermann's Drill Team Competition

**Activity Center**

10 a.m. – Bale Throwing Contest

**Park Stage**

11 a.m. – Broadway Academy of Art and Dance  
1 p.m. – The Lara Bell Band  
4 p.m. – Gary McAdams Band

**Gazebo in the Park**

2 p.m. – Queen Bee for the Day Contest

**WSDL Music Hall**

Noon – WSDL Radio Broadcast  
2 p.m. – Grant Milleren

**Kiddieland**

Noon, 2 p.m., 4 p.m., 6 p.m. – Nick's Kids Show, Kiddieland Stage

**GRANDSTAND ENTERTAINMENT****Wednesday, Aug. 31**

Pro Truck and Tractor Pulls, 7 p.m.  
General admission, \$5

**Thursday, Sept. 1**

All-Star Monster Trucks, 7:30 p.m.  
General admission, \$10

**Friday, Sept. 2****Monday, Sept. 5**

Demo Derby  
12:30 p.m., 3 p.m., 5:30 p.m.  
General admission, \$10

**Concerts****Friday, Sept. 2**

Josh Turner with Phil Vassar, 7:30 p.m.  
General admission, \$30-\$40

**Saturday, Sept. 3**

Halestorm, 7:30 p.m.  
General admission, \$30 to \$50

**Sunday, Sept. 4**

Foreigner, 7:30 p.m.  
General admission, \$30 to \$50  
`Tickets available at [www.walworthcountyfair.com](http://www.walworthcountyfair.com).

*Wheelchair rentals: Limited available onsite. Call 262-723-3228.*

3 p.m. – and roaming shows throughout the day  
Magic "Mike" Magician, Kiddieland Stage

**Kiddieland Stage**

11 a.m. – Egg and Spoon Racing contest  
1 p.m. – Cream Puff Eating contest  
1:30 p.m., 3:30 p.m., 5:30 p.m. – Marvelous Mutts

**Barnyard Adventure Tent and Garden**

5 p.m. – Surprise Make and Take for Kids, tent  
5 p.m. – Butterfly Release, Barnyard Garden

**Barnyard Adventure Learning Coop**

10 a.m. – All About Owls by Jill Roberts  
11 a.m. – Longarm Quilting Styles by The Quilting Connection  
Noon – Make and Take, Making Mandalas - Behind the Scenes of Paper Layered by Milwaukee Mandalas  
1 p.m. – Make and Take by Milwaukee Mandalas

**Grandstand**

8:30 a.m. – Horse Pulling Contest  
12:30 p.m., 3 p.m., 5:30 p.m. – Demolition Derby



The demo derby at the Grandstands is a popular draw on Labor Day, the final day of the fair. Visitors have three chances to watch the derby on Monday, Sept. 5, 12:30 p.m., 3 p.m. and 5:30 p.m.

# Don't put your financial dreams on hold.

We can help you accomplish your financial goals sooner with:



Rewards just for using your debit and credit card.



Access to over 10 different savings account options.



Personal loans designed to help you consolidate debt and rebuild credit.



No annual fees on checking accounts, savings accounts or credit cards.



**Educators**  
CREDIT UNION®

**Get started today** by scanning, visiting our Burlington or Elkhorn locations, or by **applying online at [ecu.com](http://ecu.com)**



Insured by NCUA | 262.886.5900

    @myEducatorsCU

422453

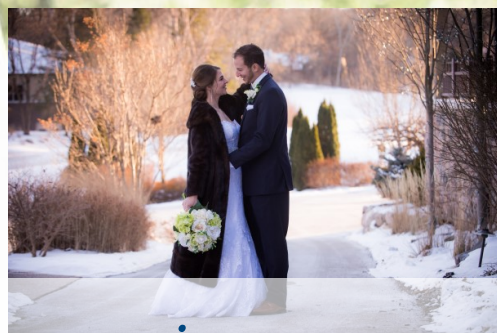


**Abbey Springs**  
on  
LAKE GENEVA

## *Remarkable Lakefront Setting*

## *Award Winning Culinary Staff*

Located on the shores of scenic Geneva Lake in Fontana, Abbey Springs offers the most unique and versatile setting for your indoor or outdoor wedding. Rely on the expertise from our professional wedding coordinator and outstanding culinary staff to manage everything, down to the last detail.



Abbey Springs | 262.275.6113 | [abbeysprings.org](http://abbeysprings.org)

422773



# WHAT'S FREE AT THE FAIR

Enjoy these features, jam packed with fun!

The Walworth County Fair offers many viewing events that are at no additional cost after the price of general fair admission, including:

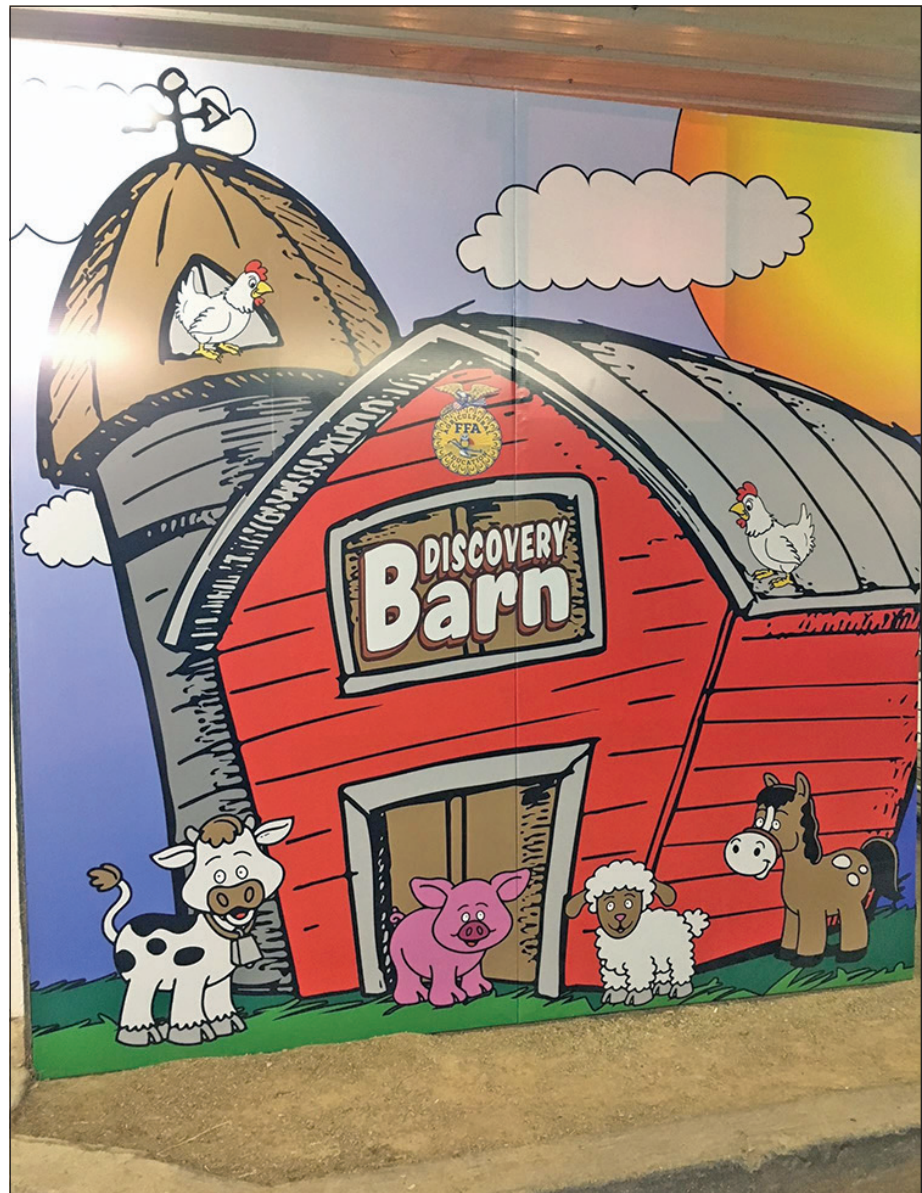
- Junior Class Competitive Exhibit Areas, showcasing thousands of Junior Class non-livestock and livestock exhibits;
- Open Class Exhibit Areas, featuring displays of Open Class non-livestock and livestock exhibits;
- Pride on Display Contest - Highlighting the Open Class Home Economics Department;
- Harness Horse Racing;
- NEW Country Music Hall;
- All Park Stage Entertainment;
- Discovery Barn Agriculture Education;
- Award-Winning Barnyard Adventure Agriculture Education Area;
- Barnyard Adventure Stage, featuring the ever-popular "Nick's Kids Show;"
- Woodcarving by Watson's Woods;
- Mighty Max;
- Daily fair guest contests;
- Draft Horse Pulls;
- Open Horse Shows;
- Kids Pedal Tractor Pulls;

- Combine Rides on Saturday Morning;
- The Magical World of Magic Mike the Magician;
- NEW! View the Plein Air Art Competition;
- Scavenger Hunt;
- and more.

## Barnyard Adventure

The Award-Winning Barnyard Adventure Agriculture Education Area features:

- Bee Happy! Bee-cause it's amazing for all ages. Take a walk through Barnyard Adventure with interesting agriculture learning stations; including Dairy, Beef, Swine, Sheep, Goats, Poultry, and more!
- Because of the threat placed on the Monarch Butterfly species, the Walworth County Fair is sensitive to butterfly care. An outdoor butterfly observation tent will be available in the Barnyard Adventure Garden with a daily butterfly release scheduled.
- The Barnyard Adventure Barn has been rebranded and will showcase educational learning for butterflies, worms, bugs, and bees, featuring the new



working observation beehive, hosted by the Walworth County Beekeepers Club. Do not miss what's new in the Barnyard Adventure Barn!

- The Learning Coop, featuring a variety of farm and home presentations. All ages welcome!
- Official Walworth County Fair Honey Show - Junior and Open Class on display in the Barnyard Barn
- Walworth County Beekeepers Honey Contest
- Growing to Learn Raised Crop Beds, featuring a variety of crops.

## On stage

- Entertainment at the Barnyard Adventure Stage includes:
- Nick's Kids Show;
  - Barnyard Adventure Kids Contests and Activities;
  - Grain Bin Learning Center;
  - Barnyard Adventure Gardens, featuring the NEW historic gardens and the NEW crop garden displays, including cranberries and hops;
  - Rainwater Recycling Patio;

- Sensory Gardens;
- and more.

## Discovery Barn

Hosted by the Big Foot FFA, Lake Geneva Badger FFA, and East Troy FFA, the Discovery Barn, a fair industry leader in agriculture education, invites everyone to visit the live displays and ag-citig features.

Located next to the Junior Beef Barn, the Discovery Barn is a fun-filled building for guests of all ages to explore. View farm animals of all types, as well as meet knowledgeable and friendly FFA members and Fair staff. Additional features, including demonstrations and the Walworth County Beekeepers Club, will make your visit to this area of the Fair an un-bee-lievably positive experience.

In addition to our returning displays, the Discovery Barn will be showcasing demonstrations on goat milking, sheep shearing, honey queen bees and has a rabbit petting area.

**above:** The Discovery Barn at the Walworth County Fair is hosted by the Big Foot FFA, Lake Geneva Badger FFA and East Troy FFA. The barn is an industry leader in agriculture education. **left:** The Walworth County Fair's Butterfly Barn is fun for kids and grownups alike. Learn how to help preserve the butterflies.



**Fairhaven**  
Senior Services



*"A Culture Of Caring Like No Other"*

- Senior Apartment Living
- Assisted/Supportive Care Options
- New, No Entry Fee Option
- Access To Multiple Care Levels

**Ask About  
1 Month  
FREE RENT**

*Schedule A Personal Tour*  

**435 W. Starin Road • Whitewater  
262-473-2140 • fairhaven.org**

  
**Prairie Village**  
by Fairhaven  
**Homes Available**



**"Life Lease"**  
2 bedroom, 2 bath  
duplex homes. New  
custom construction

Welcoming those 55  
and older. Interior and  
exterior maintenance  
included



**435 W. Starin Road, Whitewater, WI  
262-473-2140  
www.fairhaven.org**



**Looking for fun on the lake?**  
We have you covered.

**No boat? No problem!**

You can still enjoy a day on the water through our on-site watersports rental program. We offer speedboat, tritoon, paddleboat, paddleboard, kayak, waverunner, ski, and tube rentals from our Lakefront Landing Watersports building.

**Enjoy a ride on the Queen!**

Climb aboard the Lake Lawn Queen, Delavan Lake's two-level 76-foot cruise boat! Enjoy a tour of Delavan Lake and its shores, which boast five Frank Lloyd Wright homes and other historical landmarks.

The open-air top deck offers comfortable lounge seating and amazing lake views from every angle while the climate-controlled main level provides various seating options and panoramic windows.



Scan to learn more



Scan to book now



**LAKE LAWN  
RESORT**

**LAKE LAWN RESORT.COM | 262.728.7950**



**BETZEL CHAPEL**

118 South 2nd Street  
Delavan, WI 53115  
(262) 728-2500

**STEINKE CHAPEL**

515 Center Street  
Lake Geneva, WI 53147  
(262) 248-2320

[www.slfhlg.net](http://www.slfhlg.net)

422916

# SPECIALIZING IN INSURANCE PRODUCTS FOR SENIORS

Call Your Local Agent  
**NICHOLAS BLAWAT**

**1-414-545-7878**

**1-800-924-4061**

**Allied Senior Services  
Insurance & Investments, LTD**



FORMERLY NANCY BLACKMAN INSURANCE

422269

# MEMORIES FROM THE FAIR

Photos by CHAD HENSIK AND TOM GANSER  
Walworth County Fair



Last year's Walworth County Fair saw a return to normal operations after the 2020 in-person fair was cancelled because of COVID-19. Fairgoers returned in droves to support the local youth, the county's agriculture and enjoy an in-person event. **Top:** Funnel cakes and the fair go hand in hand. The Walworth County Fair offers great food at multiple locations. **above left:** Olivia Ketterhagen, Elkhorn, takes a break with her cow and goat. **above:** Jacee Johnson, of Richmond 4-H, and her grand champion wether take a victory lap. **left:** Michael Nelson of Claystone Farm in Elkhorn shows off his Clydesdales.



**clockwise from top left:** Jaisley Adams show off patriotic spirit from atop her horse; Harness racing at the fair is always a fun activity for visitors to watch; The Sanchez sisters smile as they enjoy their ice cream cones; Lainey Popp, of Walworth 4-H Club, shows off her grand champion barrow at last year's County Fair; The carnival at the fair features rides and is a big draw to the County Fair; The midway at last year's Walworth County Fair offers games, rides, food and fun.

Call for current pricing and finance options



## POWERSTAR™ TRACTORS: THE BEST SEAT FOR LOADER WORK

PowerStar™ tractors give you an operating experience unlike any other utility tractor. The cab feels as though it was designed expressly for you -- and for loader work in particular. The custom PowerStar loader is an integral part of the tractor design -- not something tacked on as an afterthought. You'll FEEL and SEE the difference the moment you take your place in the comfortable seat.

OPTIONAL HIGH-VISIBILITY ROOF PANEL FOR A CLEAR VIEW TO RAISED LOADER

EQUAL NUMBER OF FORWARD AND REVERSE SPEEDS

NO-CLUTCH FINGERTIP SHUTTLE OPTION

COMFORTABLE, INTEGRATED LOADER JOYSTICK CONTROL



Triebold Implement, Inc  
W8619 Willis Ray Rd.  
P.O. Box 266  
Whitewater, Wisconsin 53190  
(262) 473-2090  
www.triebold.com

©2012 CNH America LLC. New Holland is a registered trademark of CNH America LLC.

168217



# HAASE

# LOCKWOOD

# & ASSOCIATES

## FUNERAL HOMES & CREMATORY INC.

### Elkhorn

730 N. Wisconsin St.  
(262) 723-6390

### Genoa City Twin Lakes

113 Freeman St.  
(262) 279-5933

620 Legion Drive  
(262) 877-3013

[www.haaselockwoodfhs.com](http://www.haaselockwoodfhs.com)

352989

## WESTSIDE LANDSCAPE PRODUCTS, INC.

Westside is a stone yard available to the public and contractors for pick up or delivery



- WASHED DECORATIVE STONE, GRAVEL, MATERIAL & SAND
- BOULDERS & RIP RAP
- MULCHES & SOIL COMPOST
- WALL STONE, STEPS, FLAGSTONE AND OUTCROPPING
- GRASS SEED, POLYMERIC SAND, FERTILIZER
- EROSION CONTROL, FABRIC, GEO GRID
- EDGING
- NAILS, STAPLES, STAKES
- FIREWOOD MIXED HARDWOODS
- FIREPIT RINGS
- TOOLS

N1882 State Rd 120  
Lake Geneva, WI

262-949-4188

422873



HOURS  
Monday-Thursday  
11am-7pm  
Friday 10am-5pm  
Saturday 10am-2pm

Full Service Store for  
Band & Orchestra Needs  
Since 1945

**SALES • LESSONS  
REPAIRS • RENTALS**

# GEO R. BREBER MUSIC CO. INC.

WE WILL NOT BE UNDERSOLD!

801 E. Geneva St., Elkhorn, WI 53121  
Off Hwy. 12 & 43

**1-800-686-8737  
723-2233**

[www.brebermusic.com](http://www.brebermusic.com)

Beber music will meet or beat any advertised price on performance & professional band & orchestra instruments.  
(in stock only)



352986

# Who's the fairest of them all?

## Fairest of the Fair competition sees 5 contestants

The 2023 Walworth County Fairest of the Fair will be crowned at a ceremony Wednesday, Aug. 31, after the finals at 6 p.m. on the Park Stage.

According to fairest organizers, the Fairest of the Fair and Fair Royalty serve as the official hosts/hostesses and brand ambassador/representatives of the Walworth County Fair for their year of service.

"The opportunity to work with the fair board, Walworth County Agricultural Society, fairgoers, youth of Walworth County, and other community members is a privileged position that should be held only by those who are willing to demonstrate behaviors that fulfill this trust," the Fairest of the Fair application states.

This year, five contestants are vying for the title – Yuana Bueno, Lillienne Cauffman, Evelyn Harkness, Leslie Reinke and Josie Vance.

Here's a brief look at each contestant:

### Evelyn Harkness

Evelyn Harkness, 23, lives in Burlington. She is the daughter of Brenda and Keith Harkness.

She graduated from Burlington High School in 2017 and the University of Wisconsin-Milwaukee this spring.

She works at Stowells Catering and in security at Six Flags Great America.

"I recently got two goals of mine. The first was graduating from UW-Milwaukee with a criminal justice degree. The second was getting a supervisor position at Six Flags in security. My hope now is to go to Disney to work for their security team to make magic and memories for vacationing families while I'm young. Then move back to Wisconsin to join a police department," she wrote in her application.

Harkness was a member of Spring Prairie 4-H, serving as club secretary and president during her tenure. She was also the chairperson for the Racine County Youth Coalition, according to her application.

### Josie Vance

Josie Vance, 21, lives in Elkhorn. She is the daughter of Brian Vance.

She graduated from Elkhorn Area High School in 2020.

She attended the Professional Institute of Dental Assisting and is employed at Midwest Dental in Twin Lakes as a dental assistant.

"(I want) to be a good role model for younger generations. I love helping children and showing them things they have not seen, especially in the ag industry," she wrote in her application.

She was a member of the Sugar Creek 4-H and Elkhorn FFA and showed junior beef and dairy goats at the Walworth County Fair

### Yuana Bueno

Yuana Bueno, 21, lives in Whitewater and is the daughter of Ellie Sosa.

She graduated from Elkhorn Area High School in 2019 and attends Gateway Technical College. Bueno is employed at Generac Power Systems as a human resources coordinator.

"I want to be able to get my degree in HR. My goal is to set an example and be able to show I can accomplish anything I set my mind to," Bueno wrote of her goals in her application.

### Leslie Reinke

Leslie Reinke, 24, lives in Elkhorn. She is the daughter of Lisa and the late Michael Reinke.

She graduated from Elkhorn Area High School in 2016 and attends Blackhawk Technical College.

Reinke works at Heritage Swine Genetics.

"After completing school, I want to start my own beef cattle herd. Once I get my herd established, I have a goal of showing in at least one major stock show besides world beef expo," she wrote in her application.

She was a member of the Sugar Creek 4-H and a three-time national shooting team member. She served as sentinel and vice-president of the Elkhorn FFA. She was also a junior leader.



Walworth County 2022 Fairest of the Fair Jessica Markham will reign at this year's fair. Markham is from Elkhorn. She received a Bachelor of Science agriculture and technology education with a minor in musical theatre from UW-Plattville. Markham teaches agriculture education, seventh through 12 grade, at Black Hawk Schools. An avid fairgoer, she attended her first fair at 8 months old.

SUBMITTED PHOTO Walworth County Fair

### Lillienne Cauffman

Lillienne Cauffman, 21, lives in Elkhorn and is the daughter of Caroline Cornelison and Todd Cauffman.

She graduated from Elkhorn Area High School in 2019 and attends Gateway Technical College. She is a certified nursing assistant and works as a nanny to two children. She also works as a bartender.

"I would like to one day become a pediatric or neonatal intensive care unit nurse," she wrote as a goal in her application.

Cauffman was a member of Sugar Creek 4-H for 12 years, Wisconsin Leadership Council for two years and was a 4-H exchange student in Norway in 2016. She was also part of the Walworth County Junior Leaders for six years, according to her application.



Congratulations

Jessica Markham

2022 Fairest Of The Fair!



Who Will Wear The Tiara As Fairest Of The Fair 2023?

Adding Sparkle Since 1945

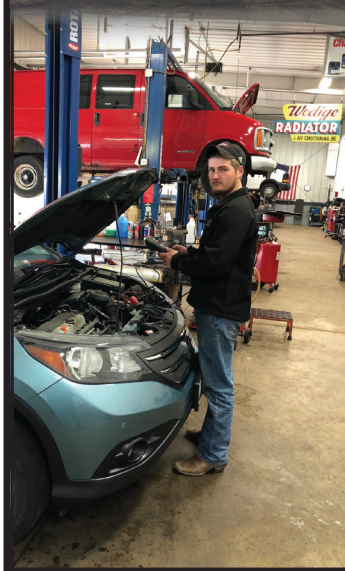


15 S. Wisconsin St. • Elkhorn, WI 53121

www.kullbergjewelers.com

262-723-2246

422385



Services

- Suspension
- Exhaust
- Tune Ups
- Tires
- Brakes
- Oil Changes
- Heating & Cooling Systems

(262) 723-2971

224 S. Wisconsin St., Elkhorn, Wis.

www.Wedigeauto.com

Monday-Friday 7:30a.m.-5 p.m.

422071



Agents:

Patricia Lauderdale, 262-370-5754

Breck Ward, 262-215-5633

Kasey Reed, 262-473-7334

Lori Garlock, 262-495-2118

Jean Schaal, 262-534-7801

www.sugarcreekmutual.com

262-723-3244



Thank you for voting Sugar Creek Mutual Insurance as "Readers Top Choice" insurance company!

400903



Join us at the 4-H Auctions to help out the youth of Walworth County

Join Us At The Whistle Stop! Wed-Sun

"from our farm to your table"

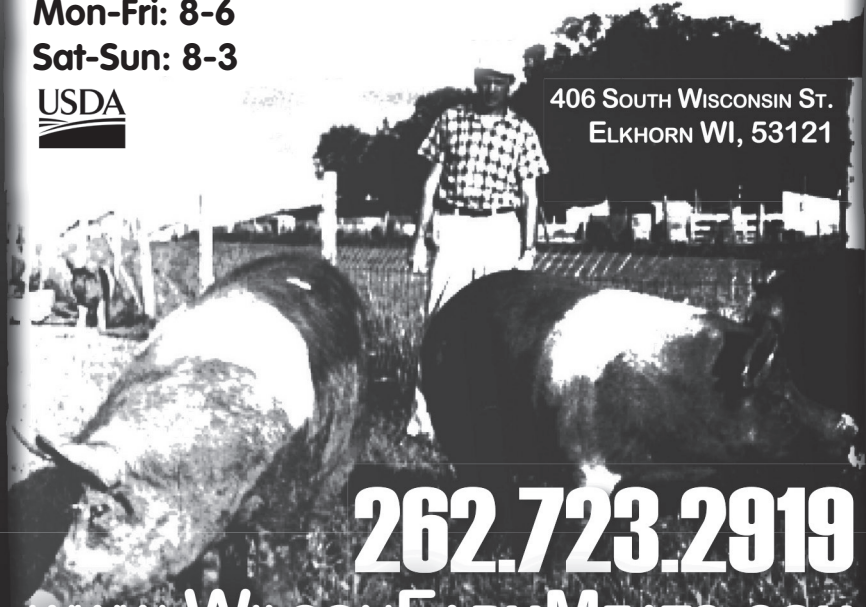
MEAT CUT TO ORDER - HOUSEMADE SAUSAGE

Mon-Fri: 8-6

Sat-Sun: 8-3



406 SOUTH WISCONSIN ST. ELKHORN WI, 53121



262.723.2919

www.WILSONFARMMEATS.COM

400594





Josh Turner

# Check out the grandstand at the **WALWORTH COUNTY FAIR**

**SLN STAFF**

The grandstand will be a busy place at the Walworth County Fair, which runs Aug. 31 through Sept. 5.

At the heart of the fair, which features the best crafters, cook and animals that the county has to offer, is the entertainment.

Tickets for grandstand events are sold separately, and do not include fair admission. Tickets can be purchased at walworthcountyfair.com.

Here are the major events:

**Pro Truck and Tractor Pulls**

On the opening night of the fair, Wednesday, Aug. 31, starting at 7:30 p.m., PI Motorsports and Badger Truck Pullers will take place.

Professional truck and tractor pullers compete in several different categories, including super farm tractors, super stock trucks and pro street diesel.

Grandstand opens at 6 p.m. Presented by Tanis Construction and Pete's Tire in Elkhorn.

**Monster trucks**

All-Star Monster Trucks will be featured at the grandstand Thursday, Sept. 1, at 7 p.m.

Competitions will be held in best tricks, full throttle racing and the "no rules freestyle throwdown."

Presented by Tanis Construction. Rides on one of the monster trucks will be available before and after the show. Grandstands open at 6 p.m.

**Josh Turner**

Josh Turner (with Phil Vassar) will take to the grandstands Friday, Sept. 2, at 7:30 p.m.

Turner is an American country and gospel singer, his voice known for its "velvety smooth" tone. Vassar is also a country music artist.

The show is presented by Thrivent Financial.

**Two bands on stage**

The groups Halestorm and Lines of Loyalty will take to the grandstand Saturday, Sept. 3, at 7:30 p.m.

Halestorm is a rock band with its new album "Back From the Dead" now out, while the Kenosha Trio Lines of Loyalty will open for the group.

Presented by 102.9 The HOG and Miller Beer.

**Foreigner concert**

Classic rock band Foreigner will perform at the fairgrounds Sunday, Sept. 4, at 7 p.m.

Foreigner's catalog sales hit Top 40 in Business Insider's Best Selling Music Artists of All Time, ahead of Britney Spears, Bob Dylan, Phil Collins, Prince, Queen, Bon Jovi, and Def Leppard.

The show is presented by Kunes Auto Group and Coors Light.

**Demo derby**

The annual demolition derby will wrap up the grandstand entertainment Monday, Sept. 5, starting at 12:30 p.m.

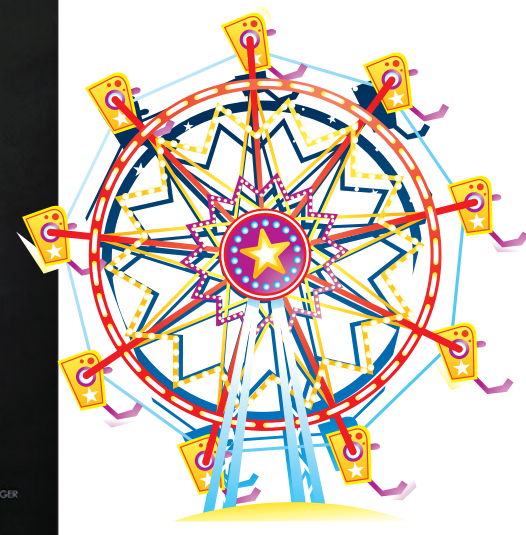
Heats are at 12:30, 3 and 5:30 p.m.

The show is presented by AM Towing and Pete's Tire of Elkhorn.

Heats are at 12:30 p.m., 3 p.m. and 5:30 p.m.



Halestorm



KARSTEN STANGER



# Bond's Auto Care & Performance

Steve "Junior" Williams, Owner

## All Aspects of Automotive Repair

106 E. Walworth Avenue  
Delavan, WI 53115  
Phone: 262-728-7750  
bondsautocare.net

422455



W8896 County Hwy. A  
Delavan, WI  
(608) 883-2100  
www.stallerestate.com

### Gift Giving Made Easier

- Wine Flights
- Bachelorette Parties
- Glass Painting Parties
- Special Packages
- Delicious Picnic Platters
- Wine & Chocolate Pairings
- Ultimate Wine Flights
- Charcuterie Boards
- Barrel Cellar Tastings



Picnic Out In The Vineyard

RELAX  
in our gazebo and sunroom with some friends and a glass of Award Winning Staller Estate Wine



Enjoy a beautiful view of the vineyard

### OPEN

June - Aug.: Daily 11 a.m. - 6 p.m.  
Sept. - May: Wednesday-Sunday 11 a.m. - 6 p.m.

Bachelorette • Weddings • Engagements • Birthdays

422073

Professional Remodelers since 1972



# STEBNITZ BUILDERS INC.

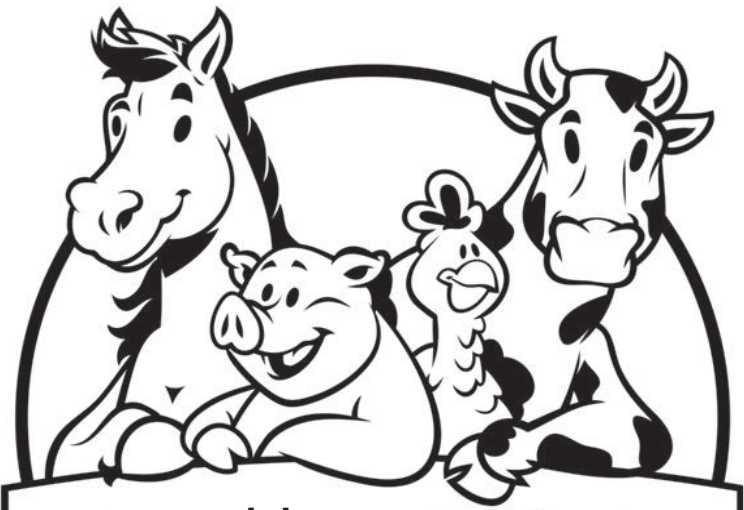


## WE'RE HERE, READY TO LISTEN

Want to add a screen room? Need more space to fit your lifestyle? Or just updating the look of your home? It's your home and your dreams.

StebnitzBuilders.com • 262.723.7232

422388



Good luck to everyone at the 2022 Walworth County Fair!

QUALITY CARE FOR YOUR PETS, HORSES AND FARM ANIMALS.



Surgery • Dentistry • Lameness & Sports Medicine  
Medical Case Management • Complementary & Alternative Medicine  
Digital Ultrasound • Digital Radiography • Laboratory • Laser  
Open Evenings Monday through Thursday

Conveniently located 1/4 mile south of Hwy. 43 on Hwy. 67 at 205 E O'Connor Drive

All major credit cards accepted.

(262) 723-2644  
www.elkhornvet.com



422111

# Going green isn't easy

*3 challenges farmers face with organic farming*

Organic production represents less than 1% of U.S. crop acres, but according to the U.S. Department of Agriculture, the demand for organics is rising. As a result, many farms are adding organic acreage to their farming operations.

“Consumer demand for more organic vegetables has driven our company in that direction,” says Adrian Garcia, an in-house pest control adviser with Braga Fresh Family Farms.

For Burkey Farms, the decision was purely economic. “We looked pretty smart when we sold organic corn for \$9 per bushel, and conventional corn was at \$3.10,” said Eric Thalken, operations manager.

Organic farming can be profitable, but there are still several obstacles to widespread adoption. Below are three significant challenges facing organic farmers.

## **Pest and weed control**

Weed, disease and insect control are shared challenges for organic growers. They have limited pesticide options because they can only use those approved by the Organic Materials Review Institute.

Some producers like Burkey farms use biological practices like cover crops that prevent soil erosion, increase soil quality, suppress weed growth, prevent disease and manage pests. Organic farms may also use mechanical weed control, though that requires two cultivations and two passes with a rotary hose. In rainy years, weeds can still get the upper hand.

At Braga Fresh Family Farms, in-season weed control is often by hand. Over the past three years, the farm began to rely on robotic weeding machines to save labor and remove weeds more effectively. To control pests, the farm has purchased thousands of beneficial insects – including parasitic wasps, lacewings and Aphidoletes – that are released into the field by a drone. They then reproduce and feed on harmful pests.

While these strategies work well in the West, it's nearly impossible to keep ahead of constant pest pressure in tropical climates where it rains most afternoons. Hot, humid weather fosters insect reproduction, weed growth and fungal diseases. Biopesticides can be used, but they need to be applied almost daily, increasing costs for farmers.

## **Shrinking yields and growing costs**

Despite strides to improve organic tools and practices, yields still lag. USDA data from 2016 show conventional crops out-yielded organics for every U.S. crop except forages.

“We spend less on crop seed, fertility and chemicals but more on equipment, labor and cover crops than an average farm in our area,” Thalken says. “Overhead can be slightly more with increased costs of administration.”

Production costs for organic agriculture can vary widely. In California, Garcia estimates that costs to grow organic vegetables are 20%-25% higher than non-organic, due to added pest control steps and higher labor costs.



**above:** Whether growing crops conventionally or organically, all farmers share in meeting expectations for sustainable food production.

**left:** Organic farming can be profitable, but there are still obstacles to widespread adoption, even as demand for the product is increasing.

STOCK PHOTOS  
Walworth County Fair

Fertilization is a major variable. Commercial organic fertilizer is expensive, and it's challenging to reach the necessary nitrogen levels needed for farming. Burkey Farms saves on fertilizer costs by applying hog manure. As with conventional crop producers who rely on manure for fertilizer, there is a risk of damaging the buildup of sodium and potassium in the soil.

## **Environmental impacts**

The environmental impacts of agricultural production vary by practice.

With lower yields, organic production requires more land to generate the same amount of food. According to a 2016 analysis of USDA yield data, if all crops switched to organic production, more than 100 million more farmland acres – an area the size of California – would be needed to achieve the same crop output.

OMRI-approved pesticides have impacts, too. Organic farmers commonly use copper sulfate as a fungicide. Although a natural compound, copper sulfate can accumulate in the soil and harm soil microbes, according to the

Genetic Literacy Project.

The multiple passes for weed control in organic production consume more fuel and increase soil compaction. Disturbing the ground with mechanical weed control also can erode soil and damage soil health.

“At the end of the day, the population is growing,” said Liz Hunt, head of sustainable and responsible business at Syngenta. “We need to make sure we are meeting these needs in a way that optimizes land and input use.”

(BPT)

COMPASS

Rob Edwards

HONESTY. INTEGRITY. RELIABILITY.

ROB EDWARDS

r.edwards@compass.com

262.903.0566

robedwards-compass.com

Rob Edwards is a real estate licensee affiliated with Compass, a licensed real estate broker and abides by Equal Housing Opportunity laws. Keefe RE agents are now licensed with Compass.



422367

# Plein Air AT THE Fair



The Plein Air at the Fair event is an opportunity for artists to create artwork that is inspired by and created solely, at the Walworth County Fair. Fairgoers will have the opportunity to watch the artists in action.

COURTESY OF WALWORTH COUNTY FAIR Walworth County Fair

AUTHORIZED SALES & SERVICE OF

**wright**™ and **ECHO**®  
Outdoor Power Equipment

EQUIPMENT

**LARRY'S**

TOWING & RECOVERY

1217 Grant Street, Lake Geneva, WI 53147

**262-249-8698**

www.hookmeuplarry.com



422811

GRANDFATHER CLOCK SALE! SAVE 50-80%!



# CLOCKS

NEW and ANTIQUE

SALES, REPAIR, CONSIGN, MOVE

## McHenry Clock Co.

Serving Illinois and Wisconsin

Family and Veteran Owned!

YOUR TRUSTED SOURCE FOR OVER 55 YEARS FOR SALES AND REPAIR



RHYTHM MAGIC  
MUSICAL MOTION  
CLOCKS ALL ON SALE!

"WE MAKE HOUSECALLS"

CLOCK PEOPLE ALWAYS  
AT THE WALWORTH  
COUNTY FAIR!

SALE PRICES ONLY AT  
THE FAIR

1-800-758-2565 • VISIT OUR WEBSITE

WWW.THECLOCKEXPERTS.COM

423073

# A POWER A+ SPORTS & EQUIPMENT ELKHORN, WI

VISIT US AT THE

## WALWORTH COUNTY FAIR

HUGE FAIR  
SAVINGS!  
ON RIDING GEAR

GIVEAWAYS!



422672

# WALWORTH COUNTY

# FAIR map



**Toynton's  
Walworth  
Funeral Home  
& Crematory**

Toynton Funeral Home provides personalized and compassionate burial and cremation service in the Walworth, WI area. Our team is available to assist you with all your service needs. We maintain a personal commitment to a standard of excellence in serving you.

**328 Kenosha St., Walworth, WI**  
 262-275-2171 • [www.toyntonfuneralhome.com](http://www.toyntonfuneralhome.com)

# ELKHORN-SALOON

**9 East Walworth St.  
Elkhorn, Wis.  
(262) 723-9997**

# Bob Hagemann Auction & Realty Service, LLC

28421 Rowntree Rd. ♦ Burlington, WI 53105-9749  
 (262) 534-2134 ♦ (262) 492-5125 ♦ fax: (262) 534-5066



e-mail: hagemannauctions@tds.net  
 Web: bobhagemannauctionrealty.com



Your so called "Junk" is worth money!

"Your Auctioneer, Real Estate Consultant ... For Life"

247728

## Looking back

# A brief history of the Walworth County Fair

The Constitution of the Walworth County Agricultural Society was adopted April 28, 1842, according to the Walworth County Fair website.

The first annual fair and cattle show that the society has any record was held in the Village of East Troy on Oct. 16, 1850. A total of 35 first premiums, 17 second premiums and three third premiums were given at that time.

The first County Fair held in Elkhorn was in 1851, and again in 1852, in the block southwest of the City Park. In 1853 the fair site was moved to Delavan but returned to Elkhorn in 1854. In 1855, the first purchase of land, from Colonel Edward Elderkin, was made consisting of six acres within the Village of Elkhorn limits.

The cost was \$100 an acre with 10% interest, a high price for the time. The city of Elkhorn donated \$300 to fence the land, erect pens and sheds and to dig wells. The fair site has remained in Elkhorn since 1855 on this same location. On April 5, 1965, the Articles of Incorporation for the Walworth County Agricultural Society Inc., were signed by the Secretary of State.

In its early years, many visitors traveled to the fair by train. At one time, there were 19 special trains which arrived daily directly at the fairgrounds and departed again each evening after the harness races. Guests came from Libertyville, Rockford, Freeport, Walworth, Beloit, Madison,

Janesville, Milwaukee and Waukesha.

The Walworth County Fairgrounds, throughout history, has been well-regarded as a live entertainment venue. 1933 was the beginning of live entertainment night shows at the Walworth County Fair, such as the WLS entertainers.

Throughout the years, the grandstand main stage has welcomed the talents of such nationally-acclaimed artists, such as Minnie Pearl, Johnny Cash, Keith Urban, Josh Turner, Little Big Town, Styx, Doobie Brothers, Cheap Trick, Foreigner, Skillet, Newsboys United, and The Beach Boys. Visit the link below for more information.

Today, the Walworth County Agricultural Society Inc., a 501(c)(3) non-profit, welcomes hundreds of thousands of guests year-round to its nearly 100-acre facility. From beautiful campgrounds, spacious buildings, open green spaces, large grandstand, and recently improved and expanded equine facility, the fairgrounds attracts visitors and events from coast-to-coast, renowned for its Midwest charm, affordability, and hospitality.

Additionally, the Walworth County Fair and fairgrounds is a consistent award-winning fair industry leader in agriculture education, competitive exhibits, non-Fair facility usage and sponsorship with the International Association of Fairs and Expositions.

## Annie's BURGER TOWN

645 N. Lincoln St., Elkhorn, Wis.  
 Call ahead for carryouts & delivery  
**(262) 723-3250**

Open Year Round 11AM  
 DELIVERY SERVICE

Summer Car Hop Service

Let us cater your event!

**GREAT BURGERS, CONES & FRIES LIKE YOU'VE NEVER TASTED!**

ITALIAN BEEF • DAILY SPECIALS • GYROS • WRAPS • SALADS

## Feed & Seed Needs For Your Backyard Barnyard Friends!

A FAMILY OWNED AND OPERATED BUSINESS FOR MORE THAN THREE GENERATIONS

# SIMONS Feed & Seed LLC



Your Feed 'n Seed Need Is Our Business Indeed!

641 North Lincoln Street • Elkhorn, WI 53121  
 Phone: 262-723-7945 • Fax: 262-723-7945



Seeing is believing so bring your proof, you'll have happy feet, paw, claw AND hoof! Clip this ad and you'll be glad!



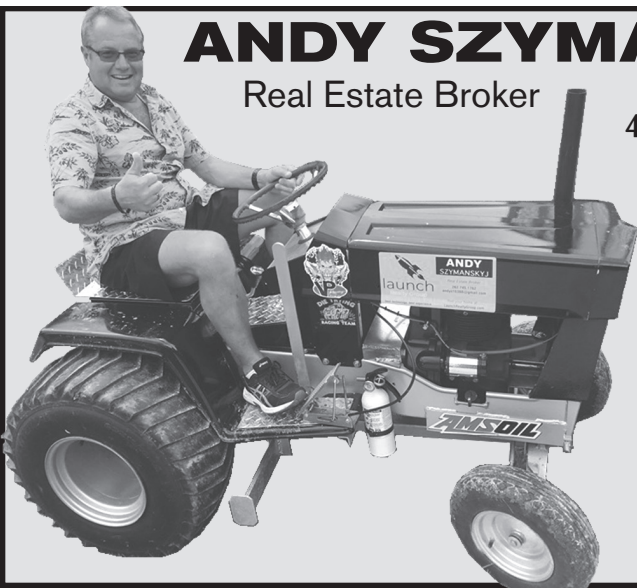
The first annual County Fair and cattle show that the Walworth County Agricultural Society has record of was held in the Village of East Troy on Oct. 16, 1850. The fair moved to Elkhorn in 1851 at City Park.

COURTESY OF WALWORTH COUNTY FAIR Walworth County Fair

## ANDY SZYMANSKYJ

Real Estate Broker

Walworth County 4-H & FFA Members, Congratulations!  
**WE'RE PULLING FOR YOU!**



launch Realty Group

**262.745.1762**  
 andys16388@gmail.com  
 LaunchRealtyGroup.com

379279



## Eye Physicians & Surgeons, SC

Eyeglass Gallery

Dr. Mark Brower • Dr. Matthew Dahlgren

Dr. Nicholas Veith • Dr. Daniel Solverson • Dr. Nathan Mathews

Cataract • Glaucoma • Cornea Transplant Surgery • LASIK Surgery  
 Laser Surgery In-Office • Diabetic Eye Disease • Eye Examinations  
 Macular Degeneration Injections • Botox/Restylane Injections  
 Cosmetic Lid Surgery

1311 S. Lincoln St. 675 W. State St.  
 Elkhorn, WI 53121 Burlington, WI 53105  
 (262) 723-4600 (262) 763-7772

www.eyephysician.com

401076

# STOP IN AND SEE OUR *Smart Home* Showroom



**BLUESTAR**  
Unleash Your Inner Chef™

Since 1956



**Lyle's TV & Appliance**

ELKHORN, WI

17 S. Washington, Elkhorn

(262) 723-3477

www.lylestv.com • Online Parts & Service

The Appliance Store with So Much More

Stop in & Shop Our  
Fully Stocked  
**Beautyrest**  
SHOWROOM



# Find what you are looking for.



- APPLES •APPLES •APPLES •APPLES •APPLES •APPLES •APPLES •APPLES
- APPLES •APPLES •APPLES •APPLES •APPLES •APPLES •APPLES •APPLES
- APPLES •APPLES •APPLES •APPLES •APPLEBARNORCHARD&WINERY
- BIGGESTAPPLEINWALWORTHCO •AWARDWINNINGWINES
- APPLEPIE •BAKEDGOODS •BUTTERS •CANDLES •CANDY •COOKIES
- CAMELAPPLE •CAMELAPPLES •CIDERDONUTS •CHRISTMASGIFTS
- COOKIES •COUNTRYSTORE •ELKHORNWISCONSIN •FRUITWINE
- FARMERDAUGHTERPIES •FROMSCRATCHBAKERY •GIFTCARDS
- HOMEMADECIDER •JAMS •JELLIES •LOCALHONEY
- MAPLESYRUP •PUMPKINS •SALSAS
- SEASONALDECOR •UNIQUEGIFTS
- WISCONSINCHEESE

**\$2.00 OFF**  
**750ml Bottle of Wine\***

\*Coupon required. Check website for store hours. Limit one coupon per customer.

Code SM18

No Expiration!

www.applebarnorchardandwinery  
**(262) 728-3266**